

# Clinically actionable respiratory testing across the continuum

Syndromic PCR respiratory solutions **deliver timely, high-quality insights** for confident decision-making in every setting and situation.



Pharmacy



Doctor's office



Accident & emergency



Hospital wards



Hospital laboratory



Community testing hub



Reference laboratory



cobas® liat system

## Quick, targeted point-of-care testing

### Near-patient PCR solutions

Provide **results in ~20 minutes**, supporting **real-time clinical decision-making**.



cobas® eplex system

## Comprehensive, fast syndromic panels

Broad **pathogen detection** (viral, bacterial) for respiratory infections, delivering **clinically actionable results** to guide treatment decisions.<sup>1</sup>



cobas® 5800 system



cobas® 6800 system



cobas® 8800 system

## Flexible, efficient testing

Scalable solutions for **labs of all sizes** with automation to **improve efficiency and reduce hands-on time**.

## A Global Leader in Molecular Diagnostics

For decades, Roche has been a **committed global leader in molecular diagnostic innovation**—advancing PCR technology to support labs across the continuum of care.



Visit [go.roche.com/respiratory-tract-infections](https://go.roche.com/respiratory-tract-infections) to learn more about how we can fit into your lab.

# Choose the right system for your lab



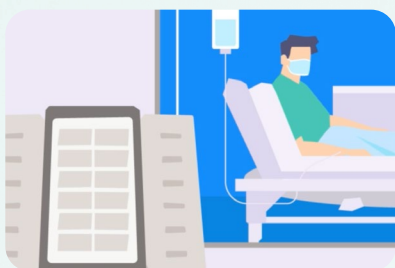
\* Turnaround time varies by assay

## **cobas® liat system** (Time to results 20 min or less\*)

### **Quick, targeted near patient testing<sup>2</sup>**

- Intuitive, easy to use interface
- Frontline multiplex assays
- Confident results, anytime, anywhere

**cobas®** SARS-CoV-2 & Influenza A/B<sup>3</sup>  
**cobas®** SARS-CoV-2<sup>4</sup>  
**cobas®** Influenza A/B & RSV<sup>5</sup>  
**cobas®** Strep A<sup>6</sup>  
**cobas® liat** SARS-CoV-2, Flu A/B & RSV<sup>7</sup>  
**cobas® liat** Bordetella panel<sup>8</sup>



## **cobas® eplex system** (Time to results ~1.5 hours)

### **Comprehensive and fast results<sup>1</sup>**

- Modular & scalable
- Easy-to-use workflow
- Urgent resulting for high-risk patients

**cobas® eplex** respiratory pathogen panel 2 (RP2)<sup>9,10</sup> (20+ targets)  
**cobas® eplex** respiratory pathogen panel 3 (RP3)<sup>8</sup>



## **cobas® 5800/6800/8800 systems** (Time to results ~3 hours)

### **Flexible and efficient testing<sup>11,12,13</sup>**

- High-throughput multiplex
- Flexible ordering/reporting
- Minimal and intuitive technician interactions

**cobas®** SARS-CoV-2 Qualitative  
**cobas®** SARS-CoV-2 Duo<sup>9,10</sup>  
**cobas®** SARS-CoV-2 & Influenza A/B v2<sup>9,10</sup>  
**cobas®** Respiratory flex<sup>9</sup> provides results for up to 12 of the most common viral pathogens.  
**cobas®** MTB  
**cobas®** MAI  
Atypical pneumonia multiplex<sup>8</sup>

#### References

- <sup>1</sup> **cobas®** eplex respiratory pathogen panel 2 method sheet 10300418001-02EN.  
<sup>2</sup> **cobas®** liat system user guide version 12.1.  
<sup>3</sup> **cobas®** SARS-CoV-2 & Influenza A/B method sheet 09216235001-05EN.  
<sup>4</sup> **cobas®** SARS-CoV-2 method sheet 09408797190-04EN.  
<sup>5</sup> **cobas®** Influenza A/B & RSV Instructions for Use 08118060190-07EN.  
<sup>6</sup> **cobas®** Strep A method sheet 07806124190-05EN.  
<sup>7</sup> **cobas®** liat SARS-CoV-2, Flu A/B & RSV method sheet 10162490001-01EN.  
<sup>8</sup> Product is in development, not currently available for sale. This information reflects design goals for this product.

- <sup>9</sup> CE-mark accepting countries only.  
<sup>10</sup> US EUA – For Emergency Use Authorization in the U.S. This product has not been FDA cleared but has been authorized under an EUA.  
<sup>11</sup> **cobas®** 5800 User Guide v2.3 Software Version 1.0.  
<sup>12</sup> **cobas®** 8800 User Guide Software Version 2.0.  
<sup>13</sup> **cobas®** 6800 User Guide Software Version 2.0.

[diagnostics.roche.com](https://diagnostics.roche.com)