

Clinically actionable respiratory testing across the continuum

Syndromic PCR respiratory solutions **deliver timely, high-quality insights** for confident decision-making in every setting and situation.



cobas® liat system

Quick, targeted point-of-care testing

Near-patient PCR solutions

Provide **results in ~20 minutes**, supporting **real-time clinical decision-making**.



cobas® eplex system

Comprehensive, fast syndromic panels

Broad **pathogen detection** (viral, bacterial) for respiratory infections, delivering **clinically actionable results** to guide treatment decisions.¹



cobas® 5800 system

cobas® 6800 system

cobas® 8800 system

Flexible, efficient testing

Scalable solutions for **labs of all sizes** with automation to **improve efficiency and reduce hands-on time**.

A Global Leader in Molecular Diagnostics

For decades, Roche has been a **committed global leader in molecular diagnostic innovation**—advancing PCR technology to support labs across the continuum of care.



Visit go.roche.com/respiratory-tract-infections to learn more about how we can fit into your lab.

Choose the right system for your lab



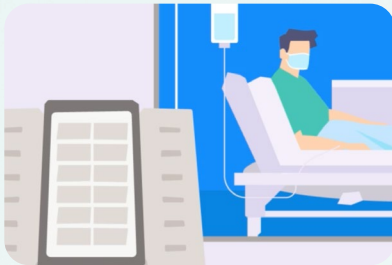
* Turnaround time varies by assay

cobas® liat system (Time to results 20 min or less*)

Quick, targeted near patient testing²

- Intuitive, easy to use interface
- Frontline multiplex assays
- Confident results, anytime, anywhere

cobas® SARS-CoV-2 & Influenza A/B³
cobas® SARS-CoV-2⁴
cobas® Influenza A/B & RSV⁵
cobas® Strep A⁶
cobas® liat SARS-CoV-2, Flu A/B & RSV⁷
cobas® liat Bordetella panel⁸



cobas® eplex system (Time to results ~1.5 hours)

Comprehensive and fast results¹

- Modular & scalable
- Easy-to-use workflow
- Urgent resulting for high-risk patients

cobas® eplex respiratory pathogen panel 2 (RP2)^{9,10} (20+ targets)
cobas® eplex respiratory pathogen panel 3 (RP3)⁸



cobas® 5800/6800/8800 systems (Time to results ~3 hours)

Flexible and efficient testing^{11,12,13}

- High-throughput multiplex
- Flexible ordering/reporting
- Minimal and intuitive technician interactions

cobas® SARS-CoV-2 Qualitative
cobas® SARS-CoV-2 Duo^{9,10}
cobas® SARS-CoV-2 & Influenza A/B v2^{9,10}
cobas® Respiratory flex⁹ provides results for up to 12 of the most common viral pathogens.
cobas® MTB
cobas® MAI
Atypical pneumonia multiplex⁸

References

- ¹ **cobas®** eplex respiratory pathogen panel 2 method sheet 10300418001-02EN.
- ² **cobas®** liat system user guide version 12.1.
- ³ **cobas®** SARS-CoV-2 & Influenza A/B method sheet 09216235001-05EN.
- ⁴ **cobas®** SARS-CoV-2 method sheet 09408797190-04EN.
- ⁵ **cobas®** Influenza A/B & RSV Instructions for Use 08118060190-07EN.
- ⁶ **cobas®** Strep A method sheet 07806124190-05EN.
- ⁷ **cobas®** liat SARS-CoV-2, Flu A/B & RSV method sheet 10162490001-01EN.
- ⁸ Product is in development, not currently available for sale. This information reflects design goals for this product.

- ⁹ CE-mark accepting countries only.
- ¹⁰ US EUA – For Emergency Use Authorization in the U.S. This product has not been FDA cleared but has been authorized under an EUA.
- ¹¹ **cobas®** 5800 User Guide v2.3 Software Version 1.0.
- ¹² **cobas®** 8800 User Guide Software Version 2.0.
- ¹³ **cobas®** 6800 User Guide Software Version 2.0.

diagnostics.roche.com