

# WHAT YOU NEED TO KNOW ABOUT MRSA

Methicillin-resistant *Staphylococcus aureus*

## OVERVIEW

Staph bacteria are normally found  
**ON THE SKIN  
OR IN THE NOSE**  
of 1/3 of the population



The bacteria are generally  
**HARMLESS  
UNLESS THEY ENTER  
THE BODY**  
through a cut or a wound

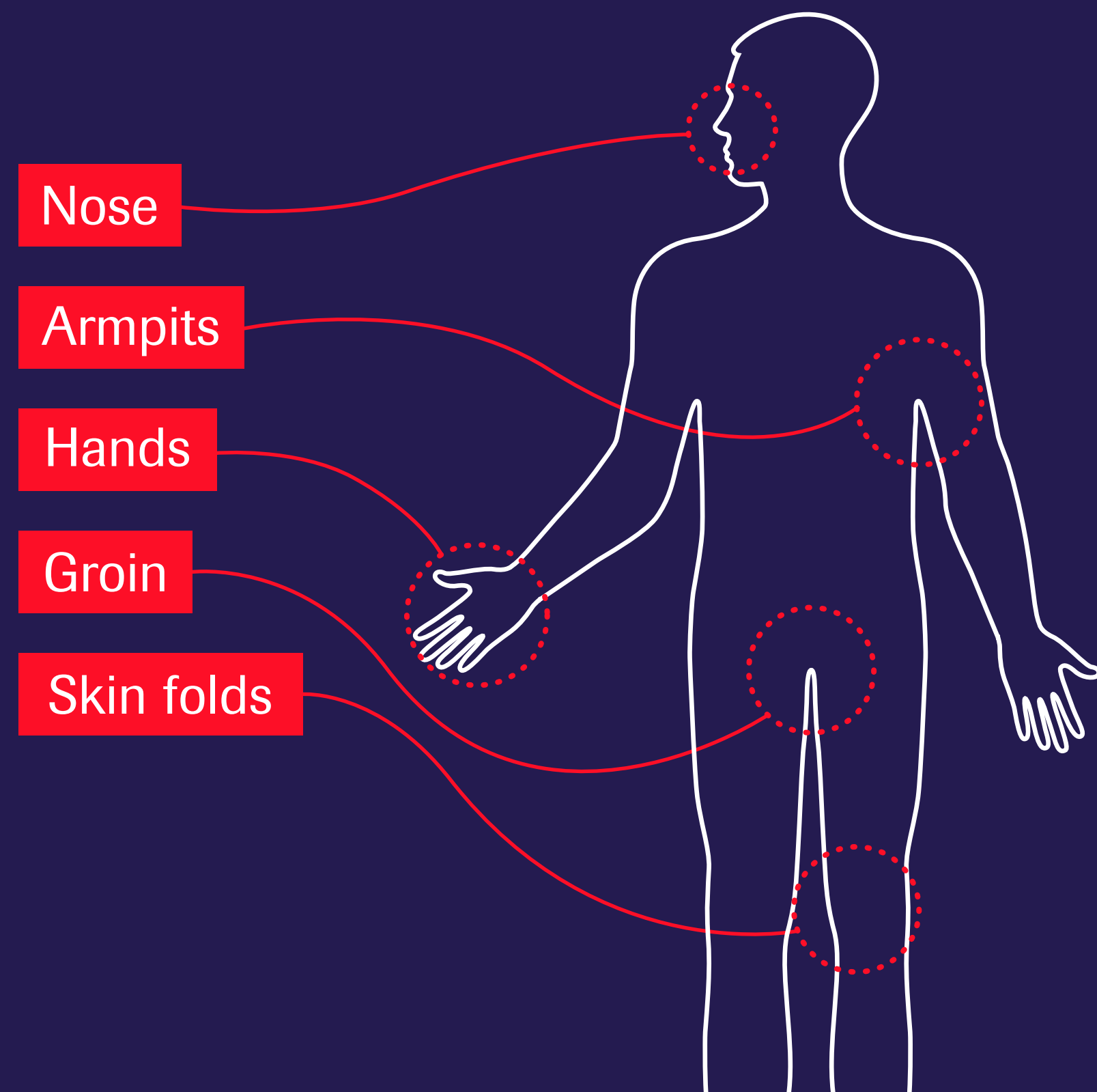


MRSA can be **deadly**  
**ONCE IT MIGRATES  
INTO THE BLOOD.**  
Infection can take a quick turn

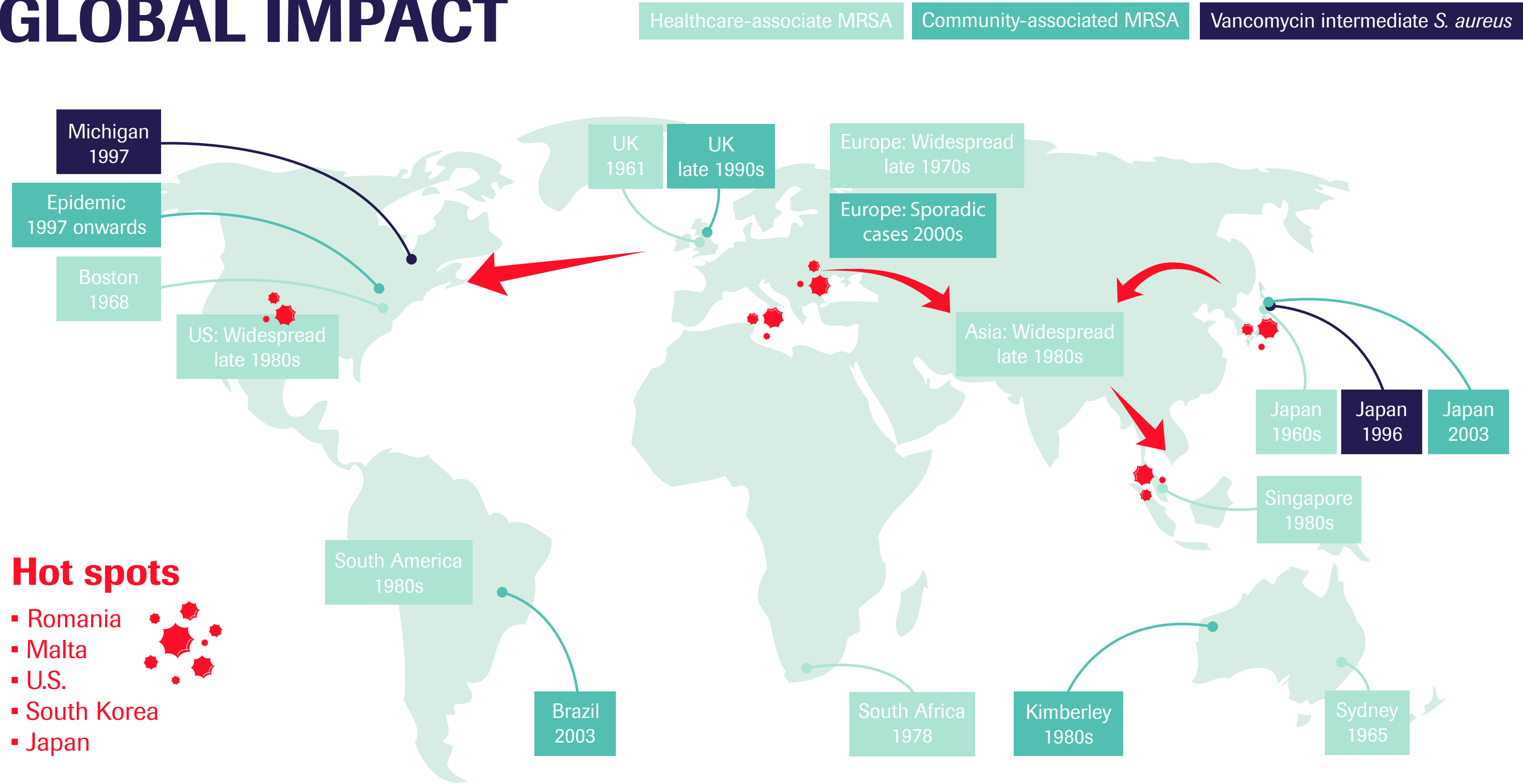


MRSA is the result of decades of often  
**UNNECESSARY  
ANTIBIOTIC USE**

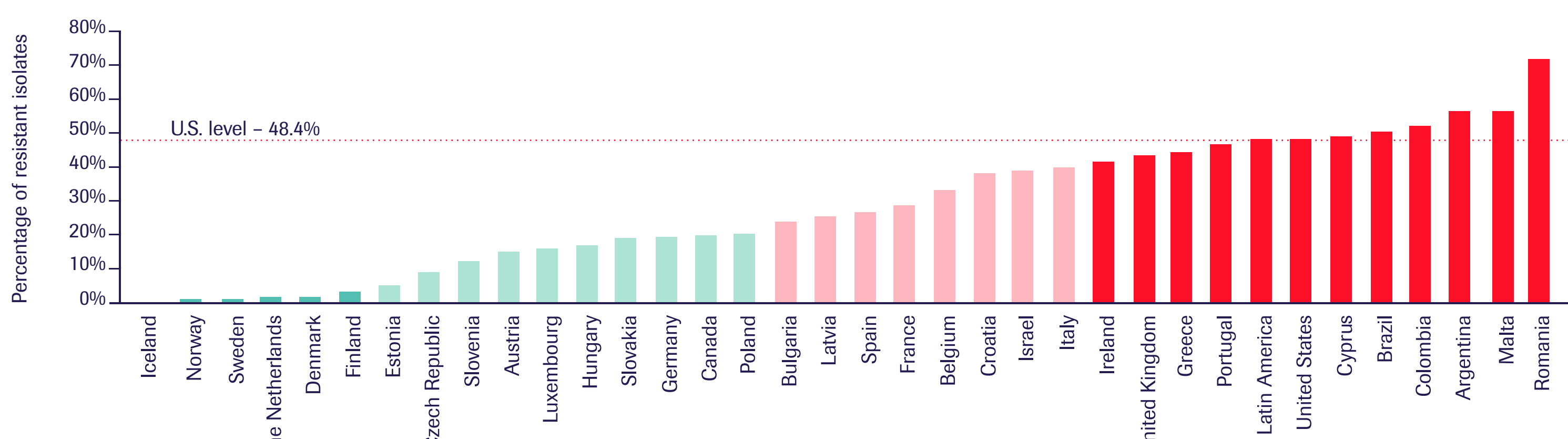
## REGIONS AFFECTED



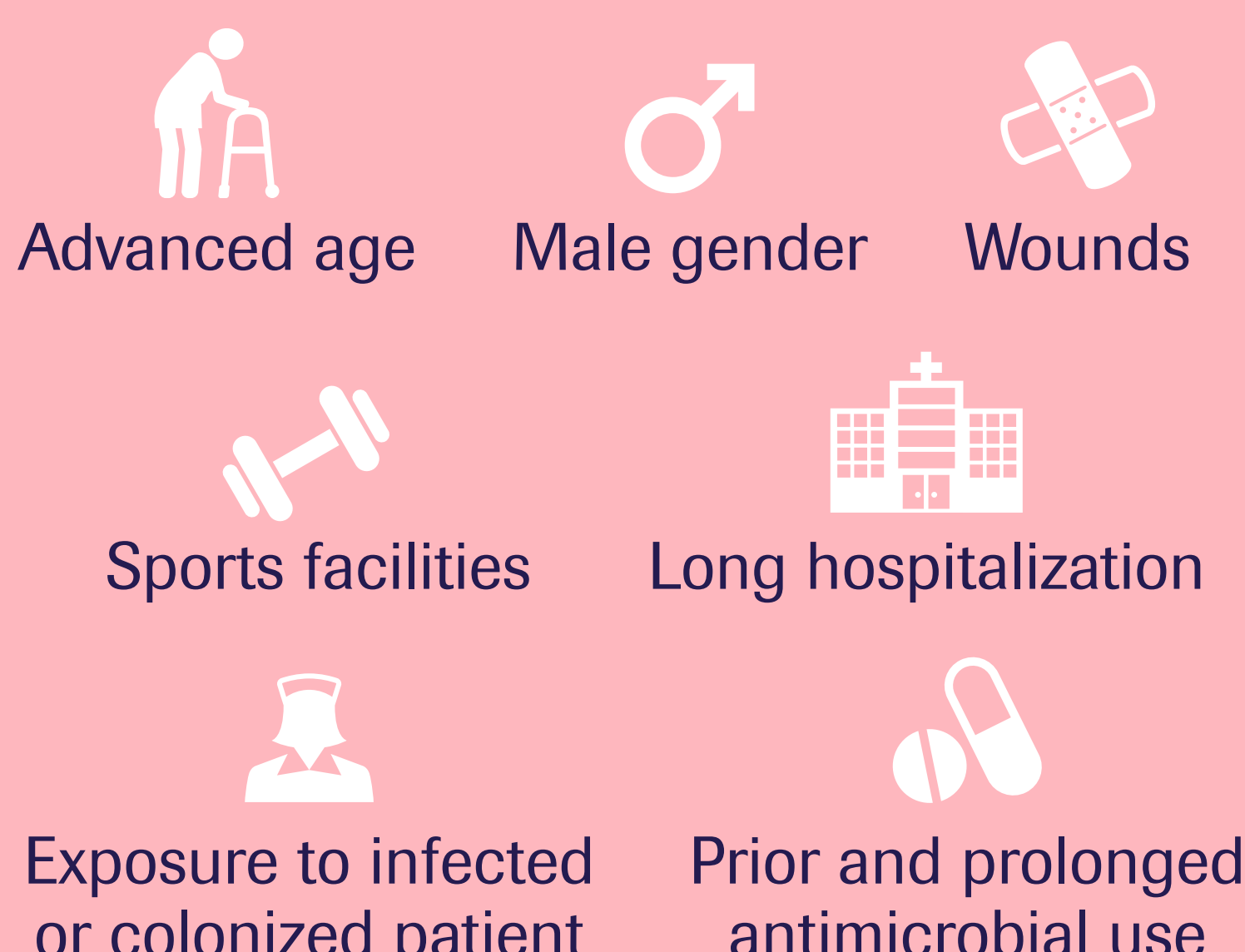
## GLOBAL IMPACT



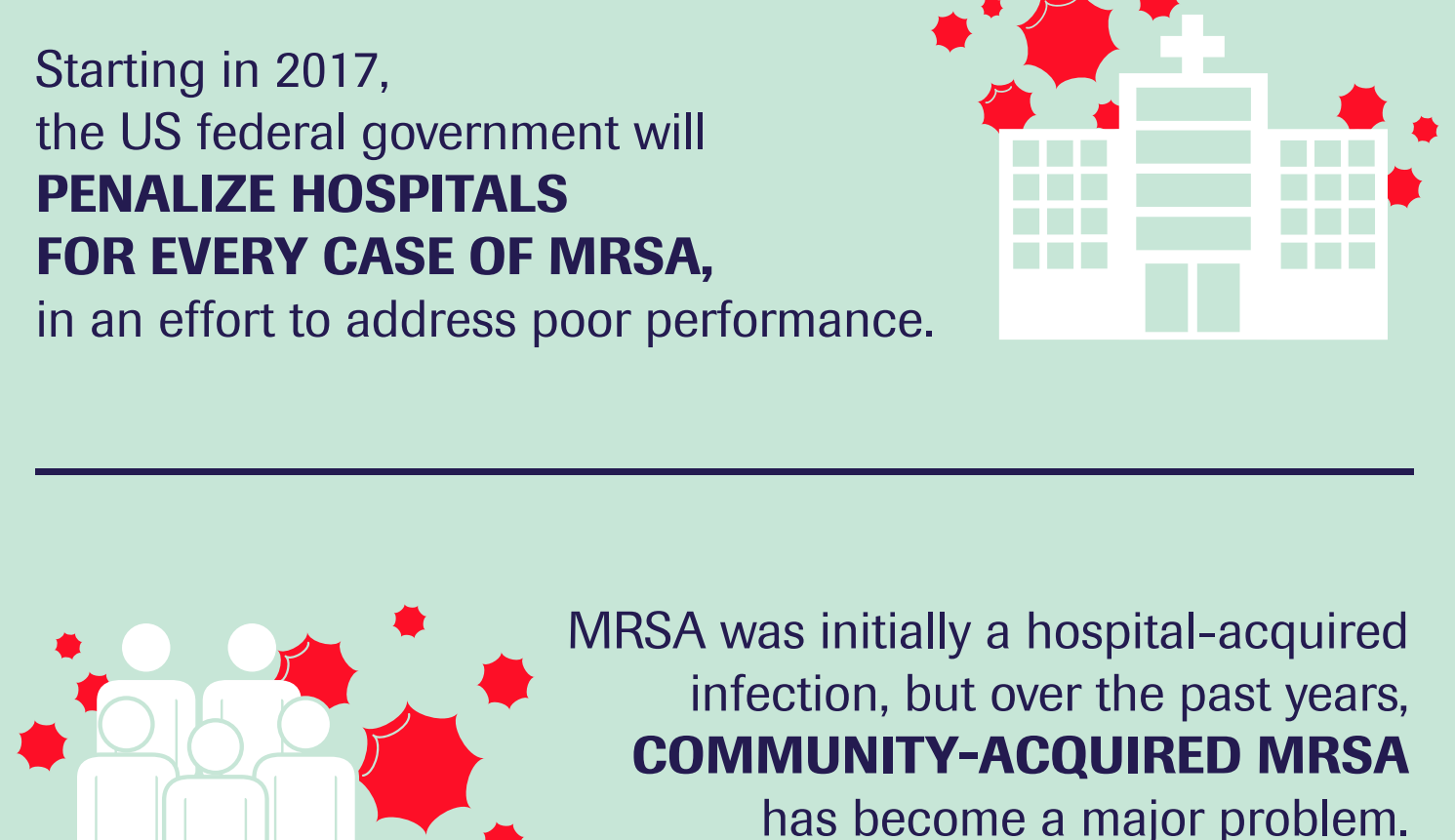
## Methicillin-resistant *Staphylococcus aureus* infection rates in the United States and other countries



## RISK FACTORS



## IMPORTANT FACTS



## MRSA HOT SPOTS



**Be sure to monitor skin problems**  
(eg, pimples, insect bites, cuts, and scrapes)

**SEE A DOCTOR** if wounds  
become infected. An infected area on the skin may be:

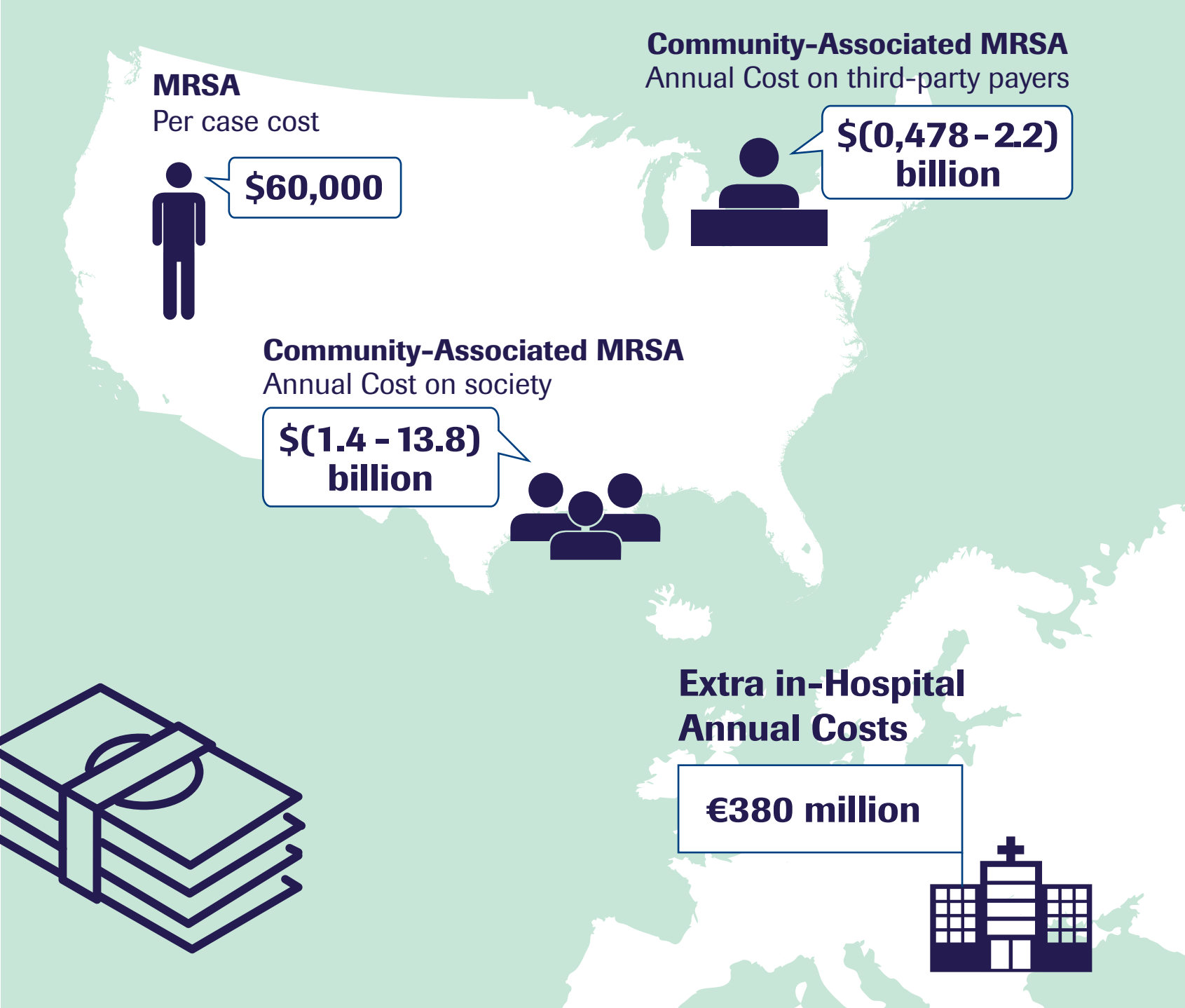
- Red
- Swollen
- Painful
- Warm to the touch
- Full of pus or other drainage
- Accompanied by a fever

**Testing samples** can be taken from the wound, blood, or urine.

## COST

MRSA TOTAL ANNUAL COST (USA)

**\$9.7 billion**



## PREVENTION

- 
- + Wash your hands often
  - + Keep cuts, scrapes, and wounds clean and covered until healed
  - + Wipe down shared equipment (athletic, medical, etc.) before and after use
  - Do not touch other's wounds or bandages
  - Do not share personal items like towels, razors, or clothing
  - No bar soaps, use bottle soap

## REFERENCES

Mayo Clinic  
The Center for Disease Dynamics Economics & Policy  
Oxford Journals  
Centers for Disease Control and Prevention  
Sannazzaro, A. *Informa Exhibitions LLC*; 2015  
Antimicrobial Resistance - Global Report on Surveillance. *WHO*; 2014  
Lee, BY; et al. *Clin Microbiol Infect*; 2013  
Koch, R; et al. *Euro Surveill*; 2014

