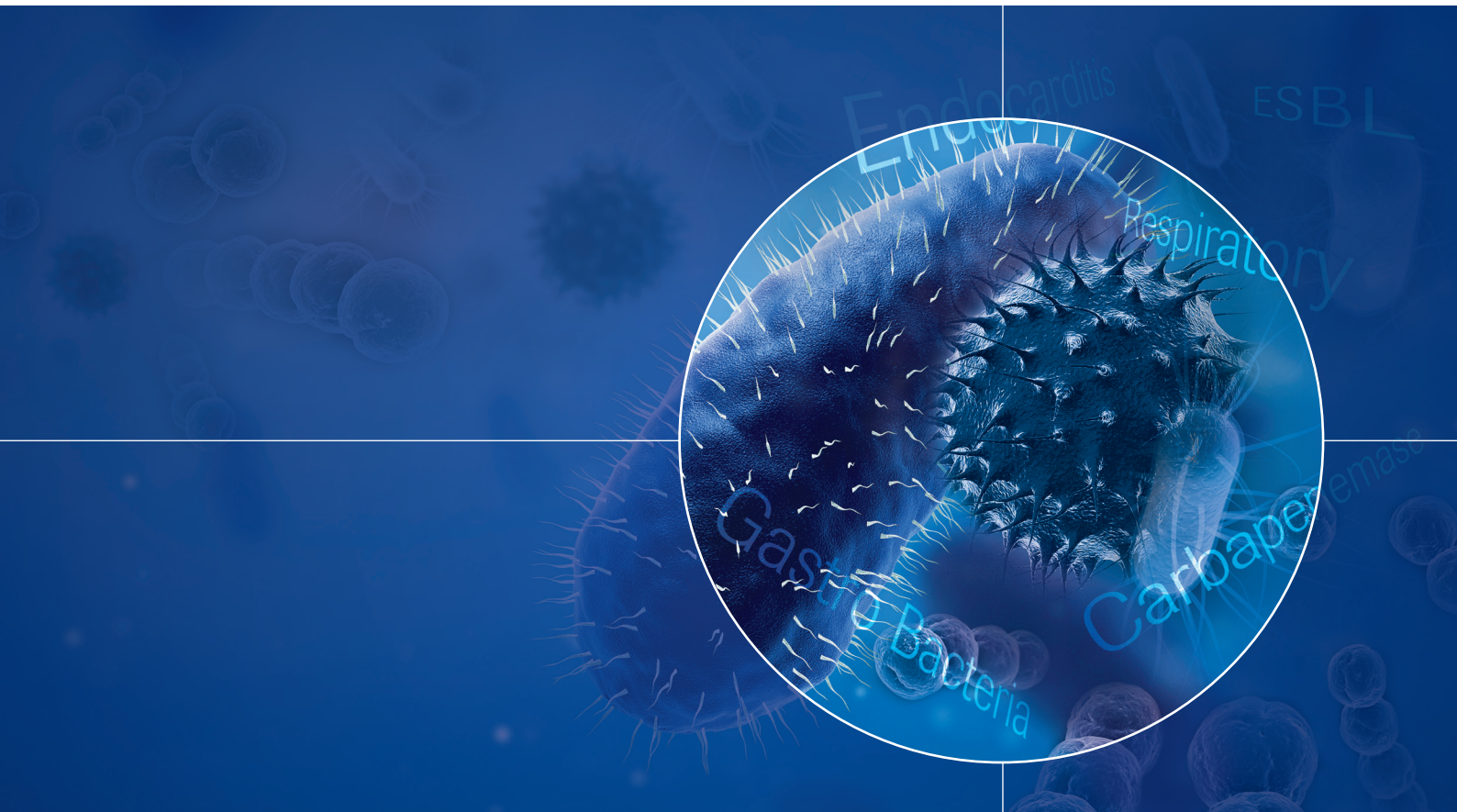


LIGHTMIX[®] MODULAR CE-IVD ASSAYS

Manufactured by TIB MOLBIOL

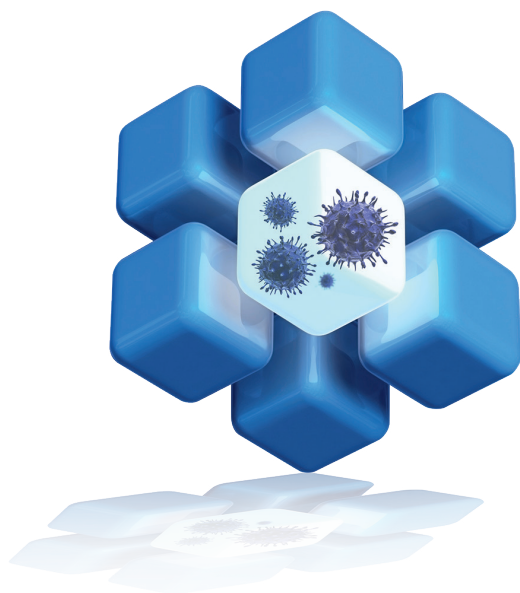
Multiplex Pathogen Detection



LIGHTMIX[®] MODULAR ASSAYS

Simple but elegant concept with numerous benefits

Modular in design, the LightMix[®] Modular CE-IVD Assays enable you to create a pathogen detection panel just right for you. Whether it's a hexaplex or a single assay, the LightMix[®] Modular Assays are changing the paradigm for pathogen detection



YOU DECIDE

Select from a wide range of ready-to-use individual assays for pathogen detection – Test only what you want to test

YOU CREATE

Design a custom panel for your needs and grow your menu by including new targets – Add rare or emerging pathogens as you find fit

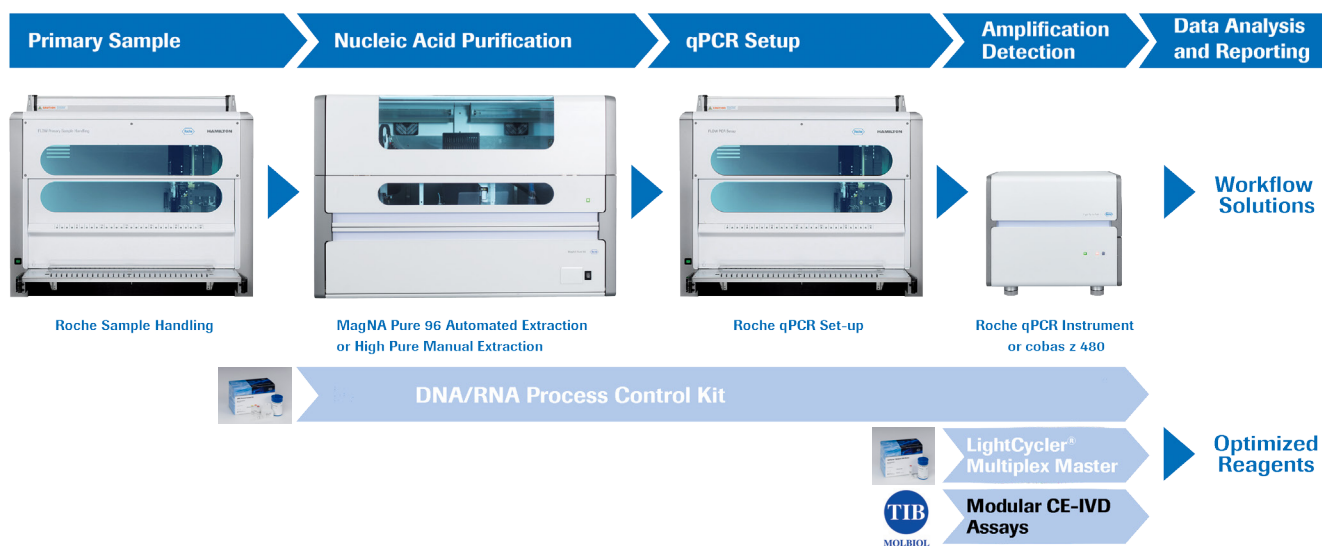
YOU EXPAND

Increase throughput and improve workflow efficiency by simultaneously detecting up to 5 targets plus 1 control in a single well – Multiplex to your needs

DEVELOP YOUR LAB, YOUR WAY

Effortless integration leading to complete solutions

Developed with clinically relevant targets in mind, the LightMix[®] Modular assays are compatible with Roche Instruments, MasterMixes and Controls to give you a streamlined, efficient workflow.



LIGHTMIX® MODULAR ASSAYS

ONE standardized protocol to generate results in three easy steps

STEP 1

Pick your targets of interest

Gastro Panel

Dye/Channel	Bacteria	Gastro Viruses	Parasites
Cyan 500/500	Yersinia enterocolitica	Norovirus GG1	Entamoeba histolytica
FAM/530	Campylobacter	Norovirus GG1 Norovirus GG2	Giardia
R6G/580	Shigella/EIEC		Dientamoeba fragilis
LC Red 610/610	Salmonella		Cryptosporidium spp
LC Red 640/640	Aeromonas		Blastocystis

Respiratory Panel

Dye/Channel	Respiratory
Cyan 500/500	Influenza A H1N1
FAM/530	Influenza A
R6G/580	Influenza B
LC Red 610/610	
LC Red 640/640	

STEP 2

Create your multiplex panel*

Detect up to 5 targets plus a control in a single well

Multiplex PCR and Instrument Compatibility

Color Compensation 40-0320 is mandatory for use in Multiplex PCR

Gastro Panel - Possible PCR Combinations Gastro Assays

Cyan 500	FAM	R6G 580	LC Red 610	LC Red 640	Controls 660	480 II	z 480	Channels
-	Campylobacter	-	-	-	Control	X	X	Duplex
-	Campylobacter	-	Salmonella	-		X	X	Triplex
Yersinia	Campylobacter	Shigella	Salmonella	-		X	X	5-plex
Yersinia	Campylobacter	Shigella	Salmonella	Plesiomonas		X		6-plex
Yersinia	Campylobacter	Shigella	Salmonella	Aeromonas		X		6-plex

Information taken from TIB MOLBIOL's LightMix® Modular Gastro Bacteria Multiplex Testing Instructions For Use**. Please note: This is for illustration purposes only. Plesiomonas assays are currently not available as CE-IVD assays

Respiratory Panel - Allowed Multiplex Panel

Cyan 500	FAM	R6G 580	LC Red 610	LC Red 640	Controls 660	480 II	z 480	Channels
H1	-	-	-	-	EAV or Roche RPC	X	X	Duplex
H1	InfA	InfB				X		4-plex

Information taken from TIB MOLBIOL's LightMix® Modular Respiratory Virus Panel 1 Instructions**. For Use. Please note: This is for illustration purposes only.

STEP 3

Run your experiment*

Rely on a seamless workflow

- Standardized qPCR protocols
- Can be combined with in-house assays
- Recommended for use with Roche instruments and reagents

*Materials for 96 reaction (lyophilised, target specific primers and probes)

**Please refer to the TIB MOLBIOL package insert for more information.

ORDERING INFORMATION

Panel/Pathogen	Target*	Dye Channel**	Roche Part Number
Gastro Bacteria	Yersinia enterocolitica	500	07979657001
	Campylobacter	530	07979657001
	Shigella/EIEC	580	07979827001
	Salmonella	610	07979789001
	Aeromonas	640	07979690001
Gastro Virus	Norovirus GG1 (500)	500	07792239001
	Norovirus GG1 (530)	530	07792247001
	Norovirus GG2	530	07792255001
Gastro Parasites	Entamoeba histolytica	500	07979746001
	Giardia	530	07979754001
	Dientamoeba fragilis	580	07989342001
	Cryptosporidium spp	610	07989334001
	Blastocystis	640	07989326001
Respiratory	Influenza A H1 (H1N1)	500	07792204001
	Influenza A	530	07792182001
	Influenza B	580	07792212001

PANELS COMING SOON: STI and Carbapenemase

To learn more about the LightMix® Modular Assays [CLICK HERE](#) or contact your local Roche Representative!

**LightMix® Modular Assays are developed and manufactured by
TIB MOLBIOL GmbH, Berlin, Germany and exclusively distributed by Roche**

For *in vitro* diagnostics use unless otherwise noted. Not all products are available in all territories due to different national regulations.

MAGNA PURE, LIGHTCYCLER and TAQMAN are trademarks of Roche.
LIGHTMIX MODULAR is a trademark of TIB MOLBIOL.

Roche Molecular Systems, Inc.
4300 Hacienda Drive
Pleasanton, CA 94588 USA

© 2016 Roche Molecular Systems, Inc.