

Redefine the reach of reliable testing



Roche supports the initiative
UNAIDS 90-90-90 treatment target.

90 %
Diagnosis

90 %
Treatment

90 %
Suppression

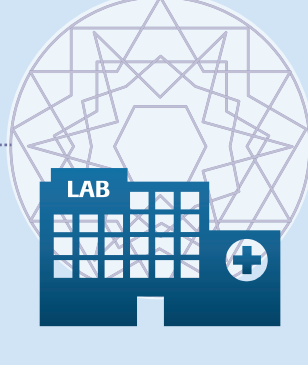
“When this three part target
is achieved, at least
73%
of all people living with HIV worldwide
will be **virally suppressed**”

LIMITATIONS TO MEETING THE THIRD 90

Access to Testing

► **Not all people live close to a major health clinic**

► **The infrastructure is not in place to allow for the required sample transportation**



► **Those living in rural settings have blood taken in small clinics**

► **Alternative solutions are required**

INTRODUCING **cobas**® PLASMA SEPARATION CARD

Design

Spotting Layer

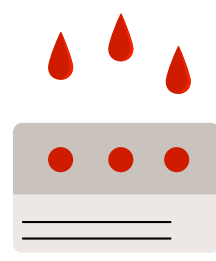
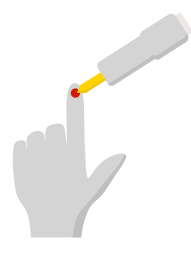
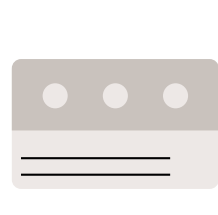
Whole blood

Filtration through membrane

Plasma

Carrier Layer

Sample Collection Workflow



Step 1

Step 2

Step 3

Step 4

Step 5

Remove primary packaging

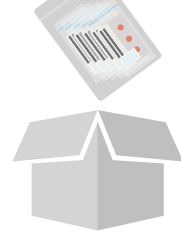
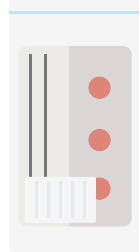
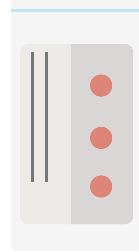
Prepare finger prick

Collect blood

Apply blood to spot

Let card dry

Sample Transport from Field to Laboratory



Step 1

Step 2

Step 3

Step 4

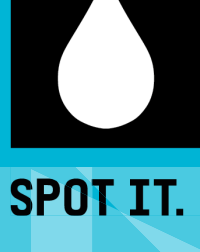
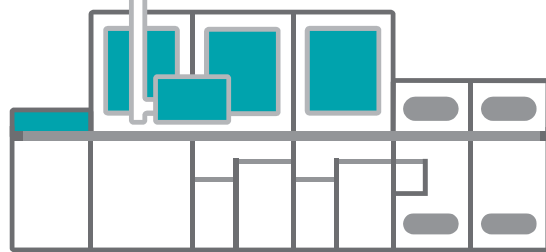
Put dried card into sample bag

Add desiccant

Add cards to transport bag

Ship transport bag to Centralized Laboratory

Compatible for use on
COBAS® AmpliPrep/COBAS® TaqMan® System
and **cobas**® 6800/8800 Systems



SPOT IT. MOVE IT. PROVE IT.

REFERENCES:

90-90-90 Treatment for all. <http://www.unaids.org/en/resources/909090>. Accessed 27Nov2017

Please contact your local Roche representative for more information.
COBAS, AMPLIPREP, and TAQMAN are trademarks of Roche.

Roche Molecular Systems
4300 Hacienda Drive
Pleasanton, CA 94588 USA

<https://molecular.roche.com/about/global-access-program>