



Lab-quality sexually transmitted infection test results in 20 minutes at the point of care.

Imagine what this could mean for you and your patients

Explore this important Roche advancement in sexually transmitted infections (STIs) testing that brings PCR accuracy and lab-quality control at the point of care.

Click and to reveal additional insights as you navigate through this digital experience.



cobas®



cobas®



PCR STI testing using the **cobas® liat** system can differentiate your clinic by providing results to patients and their partners who need to know answers regarding their sexual health.

cobas® liat system



Why and what

Why do you want PCR accurate results in 20 minutes, and what can you use to achieve it?

STIs: The increasing challenge to sexual health

Every day, **more than 1 million** people worldwide acquire an STI and cases are on the rise.¹

Among the most common:¹

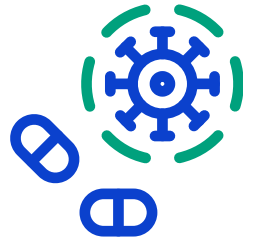
If left untreated, these infections can lead to serious complications, including pelvic inflammatory disease (PID), urethritis, ectopic pregnancy, and infertility, as well as an increased risk of infection with HIV.¹

Why and what

Why do you want PCR accurate results in 20 minutes, and what can you use to achieve it?

The difficulty of diagnosis

STI signs and symptoms are often nonspecific and overlapping, multiple STIs can present in one patient, and **up to 90%** of cases are asymptomatic.²



Targeting high-priority curable STIs with differential diagnosis

Despite similar symptomatic presentations, CT, NG and MG all have different treatments. Syndromic management of STIs, which can lead to over- and under-treatment, is believed to be a major contributor to antimicrobial resistance.³

Definitive diagnosis through accurate testing is the only way to ensure a successful treatment plan that combats antibiotic resistance.



Why and what

Why do you want PCR accurate results in 20 minutes, and what can you use to achieve it?

Diagnostic innovation through
the cobas[®] liat system

It's time to give patients quick, confident control over their sexual health ... **at the point of care.**

Most STIs are treatable with appropriate, targeted treatment, but appropriate treatment requires accurate diagnosis.

In addition to the high-throughput regular and routine STI testing provided by labs, clinicians and their patients need more access to STI testing on demand.

PCR accurate testing at the point of care enables clinicians to quickly make the right treatment decisions that can reduce transmission and mitigate the growing concerns of antimicrobial resistance.



cobas®



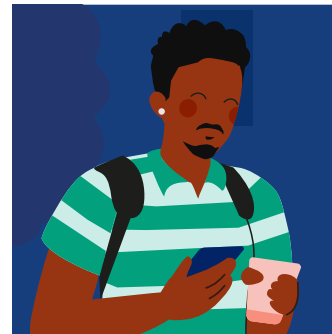
PCR STI testing using the **cobas® liat** system can differentiate your clinic by providing results to patients and their partners who need to know answers regarding their sexual health.

cobas® liat system

PCR testing enables patients everywhere to know their health status with confidence. Give men and women, younger and older, that same confidence with fast, accurate STI results in **just 20 minutes.**

Case studies: Consider these representative patients and their journey to getting quick, confident control over their sexual health.

Fast, reliable STI testing for
him, her and them



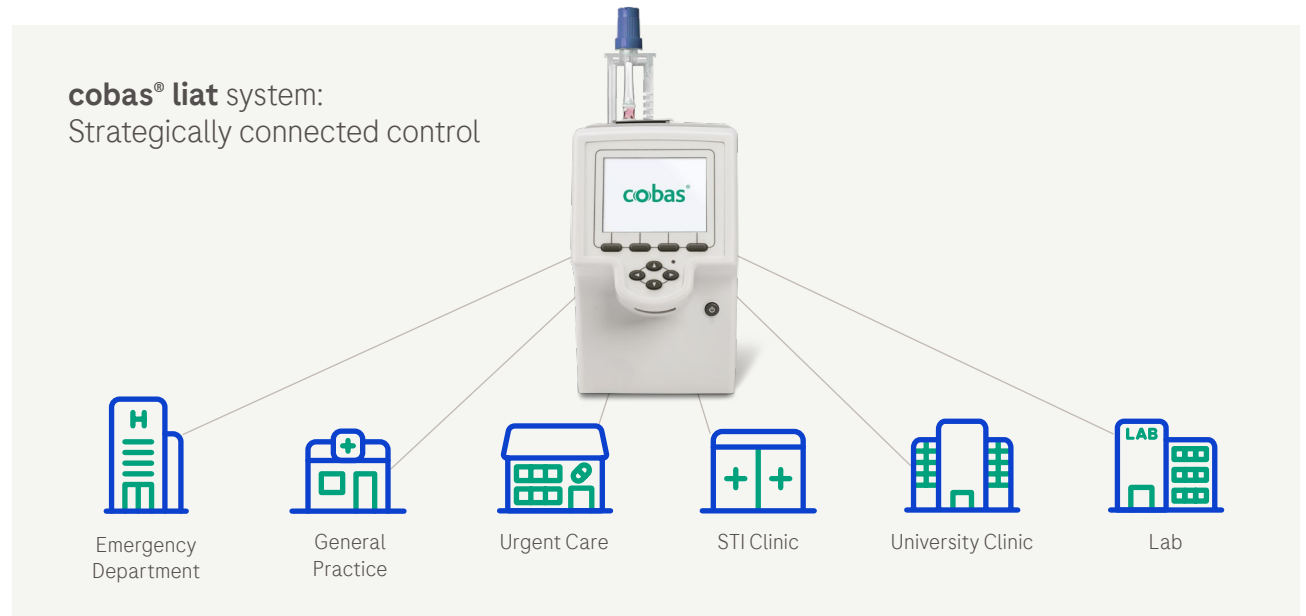


STI testing using the **cobas[®] liat** system has the potential to deliver measurable clinical benefit/savings in terms of healthcare resource utilization and patient satisfaction.³

The power of 1 visit. 1 test.
PCR accuracy in 20 minutes.

As part of **navify**[®] POC Operations and POC module for **navify**[®] Integrator, you can view STI testing results remotely and update assay scripts on demand—wherever and whenever needed.¹⁵

Maintain centralized control for decentralized STI testing





cobas®



PCR STI testing using the **cobas® liat** system can differentiate your clinic by providing results to patients and their partners who need to know answers regarding their sexual health.

cobas® liat system

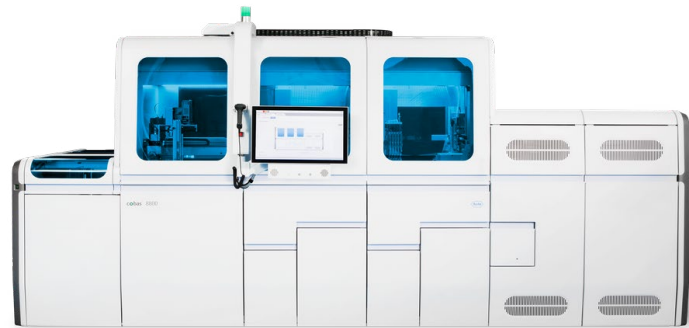
Contact your local Roche Representatives to:

- Get valuable patient education tools
- Learn specifics about the STI solutions
- Be among the first to know when the STI solutions will be available

You have different needs depending on care setting or patient condition. In addition to regular and routine testing using lab NAATs via **cobas**[®] 5800, 6800, and 8800 systems, bring the confidence that comes from **knowing right now** to STI patients anywhere. STI testing on the **cobas**[®] **liat** system is the value-driven link.

routine PCR testing at the lab

PCR testing at the POC



cobas[®] 5800, 6800, and 8800 systems



cobas[®] liat system

Contact your local Roche Representatives to:

- Get valuable patient education tools
- Learn specifics about the STI solutions
- Be among the first to know when the STI solutions will be available

STIs are on the rise

 **> 1 million** people
acquire an STI every
day, globally.¹





Contact your local Roche Representatives to:

- Get valuable patient education tools
- Learn specifics about the STI solutions
- Be among the first to know when the STI solutions will be available

Test confidently at the POC

Test confidently
at the **POC.**





Contact your local Roche Representatives to:

- Get valuable patient education tools
- Learn specifics about the STI solutions
- Be among the first to know when the STI solutions will be available

PCR accuracy in 20 minutes

PCR accuracy in
20 minutes.

A stylized illustration on a dark blue background. A hand with a green watch is shown in the foreground, pointing towards the text. In the background, a large, faint DNA double helix is visible.

Our portfolio approach –

from the **cobas[®] liat** system to **cobas[®] 5800**, **6800**, and **8800** systems – meeting your needs your needs across the care continuum.

point-of-care molecular solution



cobas[®] liat
system

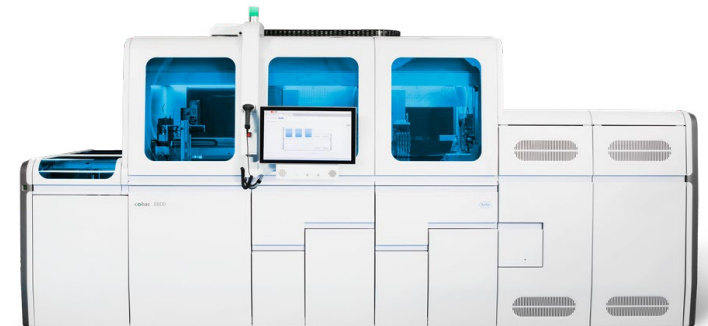
centralized lab solution



cobas[®] 5800 system



cobas[®] 6800 system



cobas[®] 8800 system



References

- ¹ WHO. STI Fact Sheets. Available from [https://www.who.int/news-room/fact-sheets/detail/sexually-transmitted-infections-\(stis\)](https://www.who.int/news-room/fact-sheets/detail/sexually-transmitted-infections-(stis)). Accessed August 2024.
- ² <https://www.cdc.gov/std/saw/talktesttreat/default.htm>. Accessed 23 March 2024.
- ³ Garrett NJ, et al. Beyond syndromic management: Opportunities for diagnosis-based treatment of sexually transmitted infections in low- and middle-income countries. PLoS One. 2018 Apr 24;13(4):e0196209. doi: 10.1371/journal.pone.0196209. PMID: 29689080; PMCID: PMC5918163.
- ⁴ Guidelines for the management of symptomatic sexually transmitted infections. Geneva: World Health Organization; 2021. Licence: CC BY-NC-SA 3.0 IGO.
- ⁵ <https://www.cepheid.com/en-US/tests/blood-virology-womens-health-sexual-health/xpert-ct-ng.html>. Accessed 12 August 2024.
- ⁶ Binx io CT/NG. Available from <https://mybinxhealth.com/binx-io>. Accessed August 2024.
- ⁷ Burkins J, et al. Factors associated with unsuccessful follow-up in patients undertreated for gonorrhoea and chlamydia infections. Am J Emerg Med. 2020; 38(4):715-719.
- ⁸ Rolland C, et al. Who fails to return within 30 days after being tested positive for HIV/STI in a free testing centre? BMC Infect Dis. 2020 Oct 27;20(1):795.
- ⁹ Hansen, et al. 2018 <https://pubmed.ncbi.nlm.nih.gov/29494950/>.
- ¹⁰ Centers for Disease Control and Prevention, AtlasPlus, HIV, Viral Hepatitis, STD, TB, and Social Determinants of Health data, <https://gis.cdc.gov/grasp/nchhstpatlas/main.html>. Accessed 28 August 2024.
- ¹¹ Zhang, et al. 2024 Journal of Infection and Public Health (pre-proof) <https://doi.org/10.1016/j.jiph.2024.05.004>.
- ¹² Vodstrcil LA, et al. 2024 The Lancet Regional Health – Western Pacific: 44:101005.
- ¹³ Dawkins M, et al. 2022 Sex Transm Dis 49(4):262-267.
- ¹⁴ Huntington S, et al. Ther Adv Infectious Dis 2021; 8:1-12.
- ¹⁵ **cobas® liat** software 3.5 User Guide - Publication version 12.0.

COBAS and LIAT are trademarks of Roche.

© 2025 Roche
MC-BE-02450

diagnostics.roche.com

Why and what

Why do you want PCR accurate results in 20 minutes, and what can you use to achieve it?

The difficulty of diagnosis

Overlapping symptoms⁴

Click on to see overlapping symptoms.



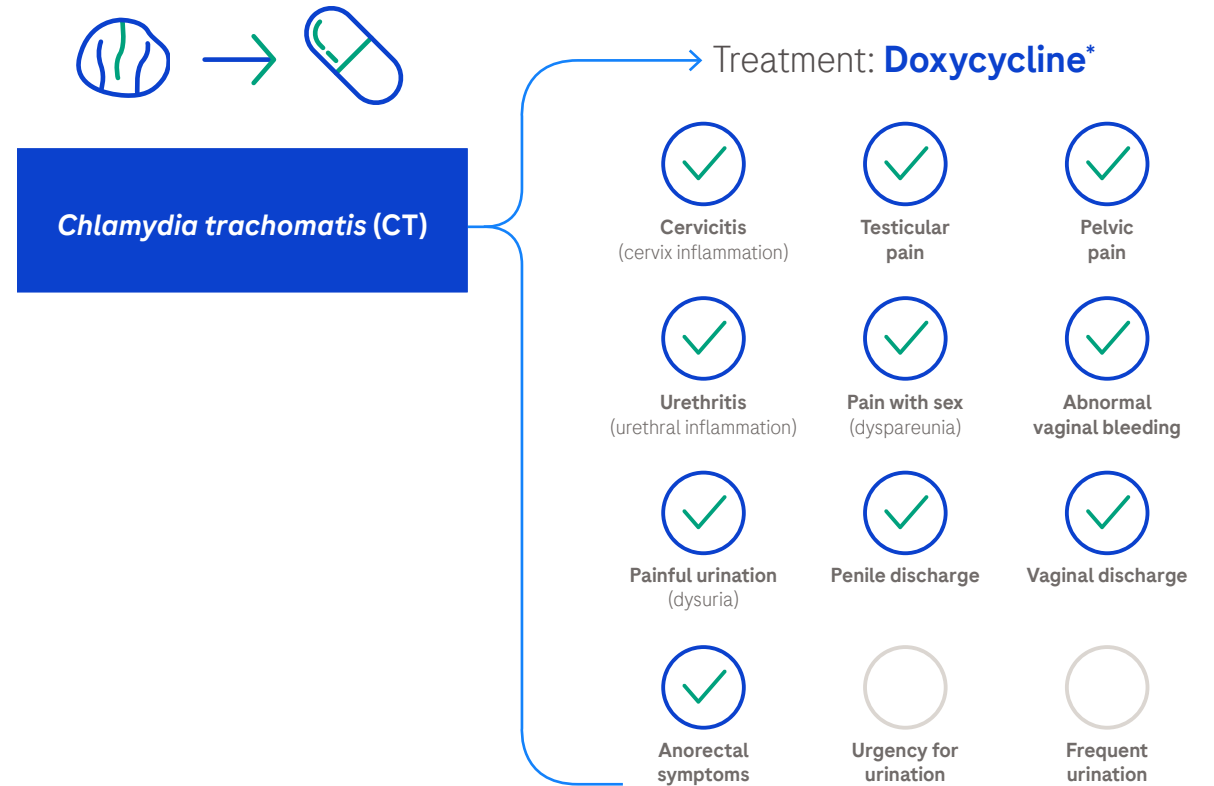
Please check your local guidelines on diagnosis and recommended treatment for your patients.

Why and what

Why do you want PCR accurate results in 20 minutes, and what can you use to achieve it?

The difficulty of diagnosis

Overlapping symptoms⁴



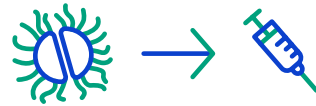
⁴Based on 2021 CDC STI Treatment Guidelines – <https://www.cdc.gov/std/treatment-guidelines/STI-Guidelines-2021.pdf>. Please check your local guidelines on diagnosis and recommended treatment for your patients.

Why and what

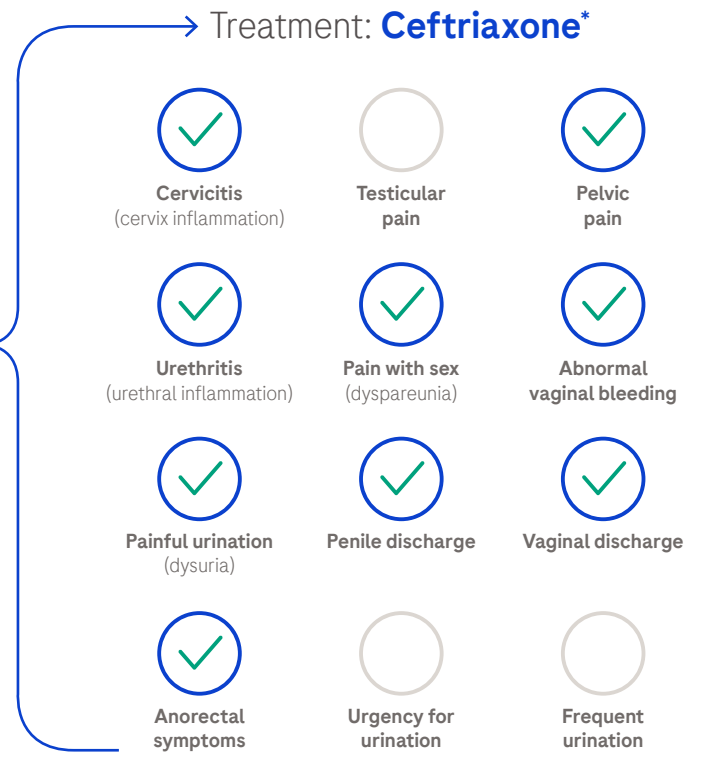
Why do you want PCR accurate results in 20 minutes, and what can you use to achieve it?

The difficulty of diagnosis

Overlapping symptoms⁴



Neisseria gonorrhoeae (NG)



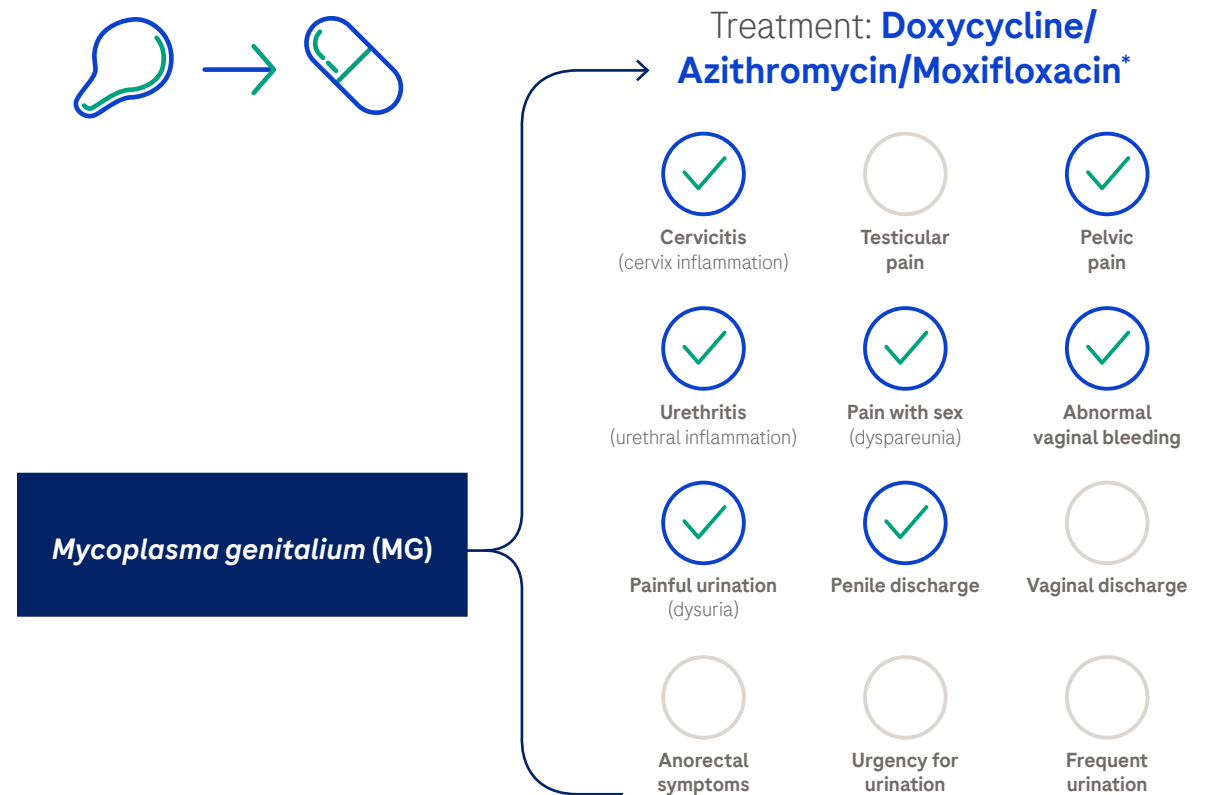
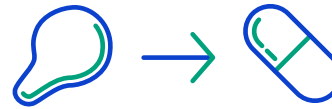
*Based on 2021 CDC STI Treatment Guidelines – <https://www.cdc.gov/std/treatment-guidelines/STI-Guidelines-2021.pdf>.
Please check your local guidelines on diagnosis and recommended treatment for your patients.

Why and what

Why do you want PCR accurate results in 20 minutes, and what can you use to achieve it?

The difficulty of diagnosis

Overlapping symptoms⁴



*Based on 2021 CDC STI Treatment Guidelines – <https://www.cdc.gov/std/treatment-guidelines/STI-Guidelines-2021.pdf>. Please check your local guidelines on diagnosis and recommended treatment for your patients.

Why and what

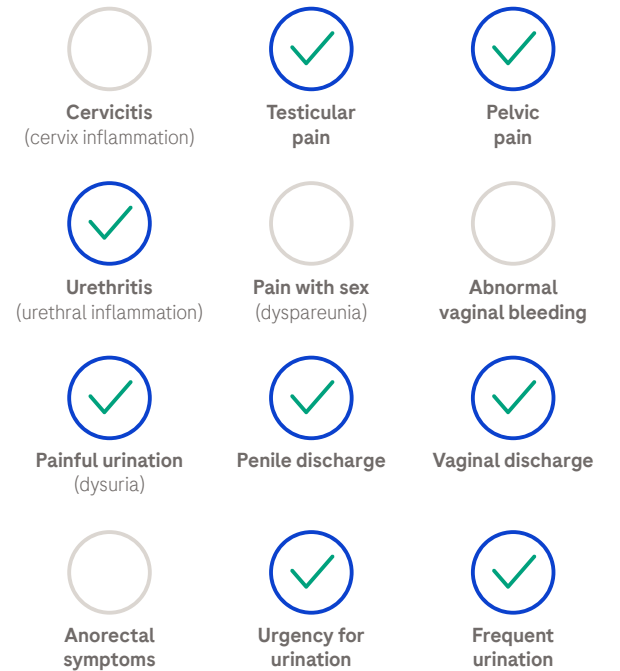
Why do you want PCR accurate results in 20 minutes, and what can you use to achieve it?

The difficulty of diagnosis

Overlapping symptoms⁴

Symptoms of other urogenital infections share similarities with a CT, NG or MG infection making it challenging to diagnose based on clinical presentation alone.

Other urogenital infections



Please check your local guidelines on diagnosis and recommended treatment for your patients.



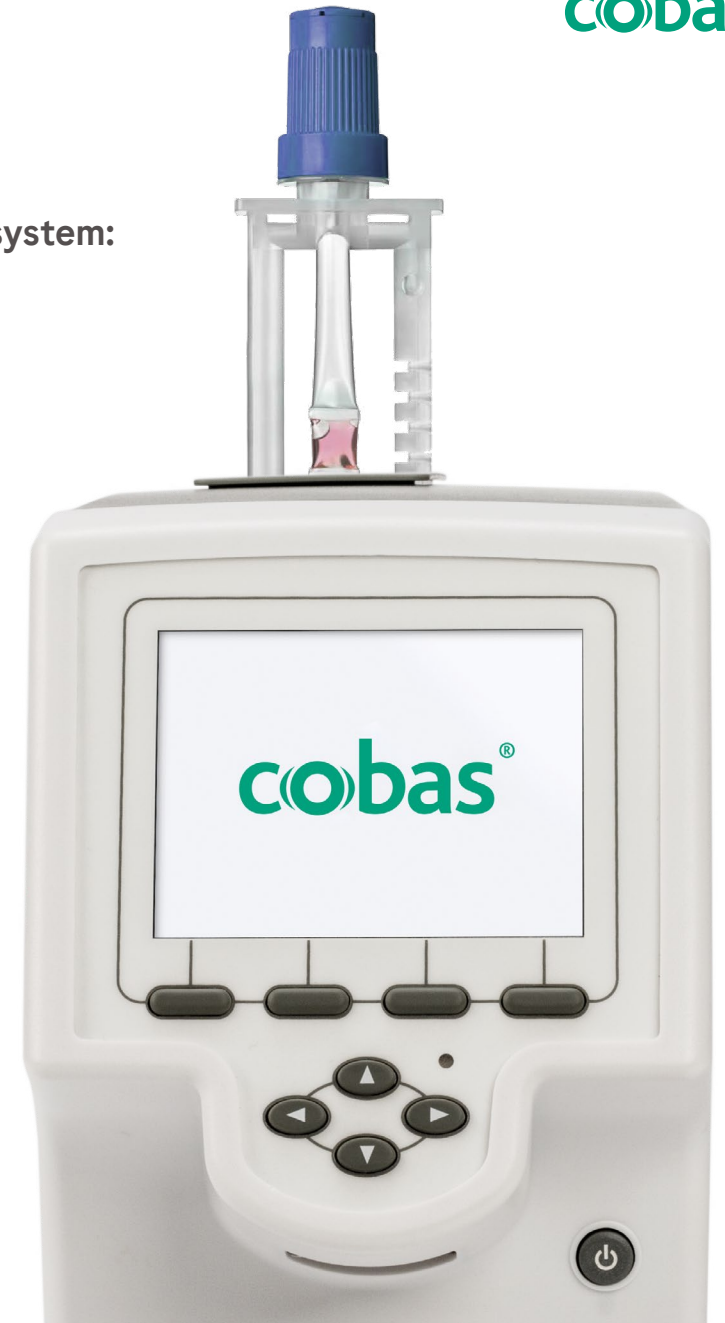
Why and what

Why do you want PCR accurate results in 20 minutes, and what can you use to achieve it?

Diagnostic innovation through the cobas® liat system

cobas®

STI testing with the cobas® liat system:
Point-of-care power, amplified





Why and what

Why do you want PCR accurate results in 20 minutes, and what can you use to achieve it?

Diagnostic innovation through the cobas[®] liat system

cobas[®]

STI testing with the cobas[®] liat system:
Point-of-care power, amplified

Results in just 20 minutes



cobas[®] liat system
STI tests take just
20 minutes,
unlike others.^{5,6}





Why and what

Why do you want PCR accurate results in 20 minutes, and what can you use to achieve it?

STI testing with the cobas[®] liat system:
Point-of-care power, amplified

Fast results



Fast results support **actionable treatment decisions** and reduce the need for patient follow up^{7,8}

Diagnostic innovation through
the cobas[®] liat system





Why and what

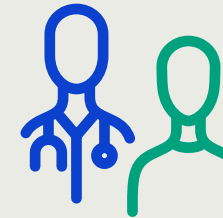
Why do you want PCR accurate results in 20 minutes, and what can you use to achieve it?

Diagnostic innovation through the cobas[®] liat system

cobas[®]

STI testing with the cobas[®] liat system:
Point-of-care power, amplified

Gold-standard PCR



Gold-standard PCR technology delivers the **quality** of centralized lab testing at the **patient point of care**⁹





Why and what

Why do you want PCR accurate results in 20 minutes, and what can you use to achieve it?

STI testing with the cobas[®] liat system:
Point-of-care power, amplified

Easy, intuitive user handling



Easy, intuitive user handling
from sample to results

Diagnostic innovation through
the cobas[®] liat system





Why and what

Why do you want PCR accurate results in 20 minutes, and what can you use to achieve it?

STI testing with the cobas[®] liat system:
Point-of-care power, amplified

Deliver definitive answers



No highly-trained lab tech interpretation is needed to deliver a definitive answer

Diagnostic innovation through the cobas[®] liat system





Eric, 25-years old

Several casual sexual encounters in the past 6 months. Unreliable condom use.

Presents at urgent care with symptoms over past 2 days of:

- Urethral discharge
- Pain with urination

High suspicion of an STI:
CT, NG or MG

Patients with symptoms highly suggestive of an STI are likely to be treated empirically if no POC testing is available

High urgency: Most guidelines advise testing for CT, NG and MG in patients presenting with urethritis

No test is available at the point of care

Guidelines advise to **treat empirically** for NG +/- CT at initial presentation if no point of care test is available.

Potential for Eric to receive an inappropriate, ineffective treatment:



- NG treatment (ceftriaxone*) requires a large and painful intramuscular injection
- MG is as common as CT in causing urethritis**

cobas[®] liat at the point of care

The opportunity to test at the point of care allows for **same-appointment results** ensuring:



Eric receives an accurate diagnosis of an **MG infection**



Eric receives appropriate, **targeted** treatment

[View Eric's journey](#)

*Based on 2021 CDC STI Treatment Guidelines – <https://www.cdc.gov/std/treatment-guidelines/STI-Guidelines-2021.pdf>. Please check your local guidelines for recommended treatment regimen.

**Prevalence for MG is not well-understood yet, but it can be as high as CT in certain populations.



Maria, 19-years old

Presents at local emergency department with symptoms over the past 24 hours of:

- Lower abdominal pain
- Vaginal discharge
- Vaginal bleeding after intercourse

Examination:

- Lower abdominal tenderness
- Cervical discharge and cervical motion tenderness (suggestive of PID)
- Negative urine pregnancy test

Pelvic Inflammatory Disease (PID) requires treatment at the time of presentation

High urgency: Accurate point-of-care test availability may change current recommendation of broad spectrum antibiotic treatment

No test is available at the point of care

Current guidelines advise **broad spectrum antibiotic treatment** based on provisional diagnosis of PID, without waiting for test results.

Potential for Maria to receive inappropriate, ineffective treatment:



- Maria is now subject to the potential side effects of over-treatment
- Increased risk of antimicrobial resistance

cobas[®] liat at the point of care

The opportunity to test for CT, NG and/or MG at the point of care allows for **same-appointment results** ensuring:



Maria receives an accurate diagnosis of a **CT infection***



Maria receives appropriate, **targeted** treatment

[View Maria's journey](#)

*Prevalence for MG is not well-understood yet, but it can be as high as CT in certain populations.



Louis, 60-years old

- Sexually active, male partners
- Taking PrEP
- Leaving for an overseas vacation

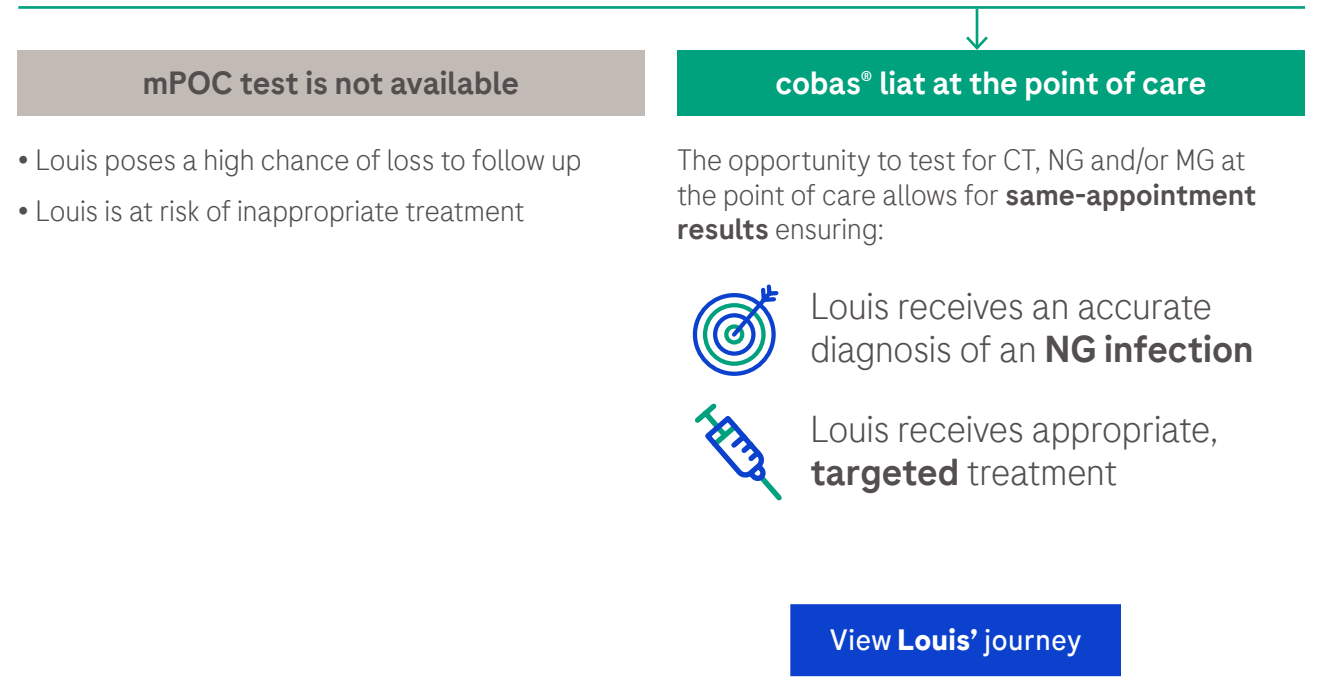
Presents at urgent care after a recent sexual partner advised today that he might have an STI

- No symptoms

High suspicion of an STI:
CT, NG or MG

Potential loss to follow up

High urgency: Point-of-care testing reduces loss to follow up



mPOC test is not available

- Louis poses a high chance of loss to follow up
- Louis is at risk of inappropriate treatment

cobas[®] liat at the point of care

The opportunity to test for CT, NG and/or MG at the point of care allows for **same-appointment results** ensuring:



Louis receives an accurate diagnosis of an **NG infection**



Louis receives appropriate, **targeted** treatment

[View Louis' journey](#)



You're never too old for an STI

Rates of sexually transmitted infections (STIs) have risen steeply among people **55 and older** during the past decade: between 2012 and 2022, gonorrhea cases rose fivefold; chlamydia cases tripled.¹⁰



Gonorrhea cases rose fivefold¹⁰



Chlamydia cases tripled¹⁰

STI diagnostic testing using the **cobas[®] liat** system can help clinicians reduce inappropriate treatment and also help reduce the risk of patients lost to follow up.

[View Louis' journey](#)

STI testing using the **cobas[®] liat** system has the potential to deliver measurable clinical benefit/savings in terms of healthcare resource utilization and patient satisfaction.³

Greater patient and clinician satisfaction



Patients report high levels of satisfaction with POC testing and are **willing to wait 20–30 minutes extra for results**, if treatment can be initiated immediately, but willingness to wait decreases as waiting time increases³

The power of 1 visit. 1 test.
PCR accuracy in 20 minutes.



STI testing using the **cobas[®] liat** system has the potential to deliver measurable clinical benefit/savings in terms of healthcare resource utilization and patient satisfaction.³

Less presumptive treatment

The power of 1 visit. 1 test.
PCR accuracy in 20 minutes.



NAAT molecular point-of-care solutions can help clinicians reduce the risk of over/under treatment, optimize healthcare resource utilization, and minimize staff time for patient follow-up.¹¹⁻¹⁴