



DISCOVERY

Innovative IHC & ISH Research

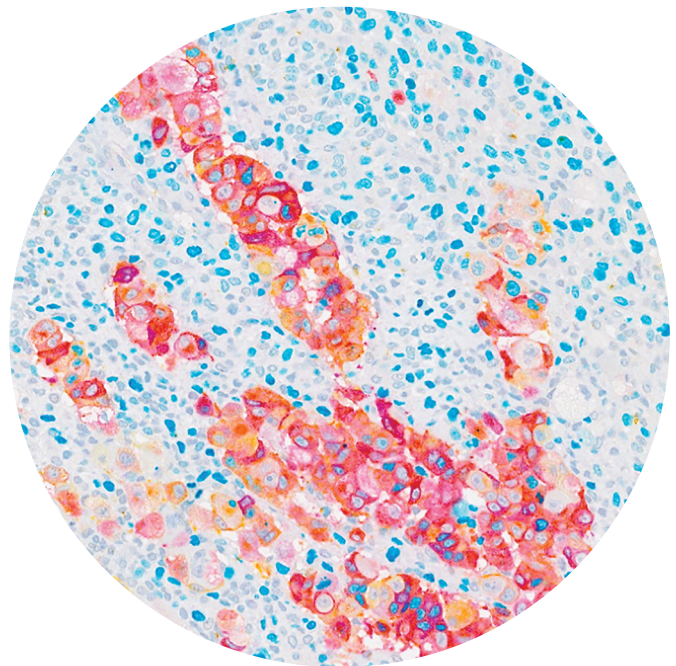
Shape the DISCOVERY ULTRA Instrument

to your research goals and push the boundaries of medical science



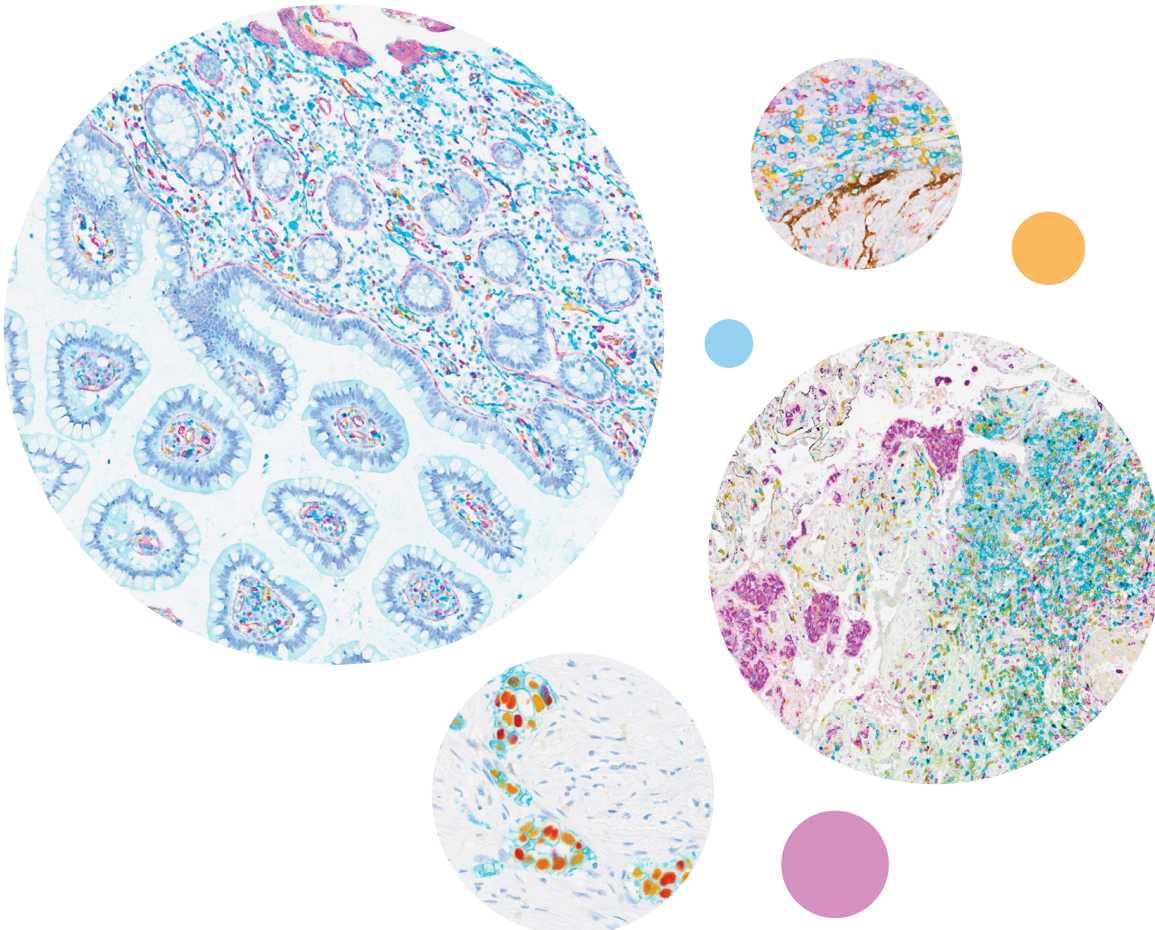
The DISCOVERY ULTRA enables automation of a wide range of analytic techniques such as:

- Many options for chromogenic and fluorescent staining for both IHC and ISH
- Leading-edge detection chemistries
- In situ hybridisation for RNA, DNA, and small non-coding RNAs
- Multiplexed chromogenic and fluorescent IHC or ISH
- Same-slide multiplexed IHC & ISH in any color combination



With the DISCOVERY ULTRA research instrument for IHC/ISH, your lab will be able to:

- Push the boundaries of medical research with an **instrument** that allows true **continuous random access**.
- **Expand** your IHC/ISH **multiplexing** capabilities with **highly flexible staining procedures**.
- Leverage the **comprehensive** menu of **ready-to-use** reagents to create a broad range of sensitive, specific assays.
- Count on our **growing product pipeline** to support your research as it evolves.
- **Discover** every **project's full potential** with a provider experienced in **translational research**.



DISCOVERY products are for Research Use Only. Not for use in diagnostic procedures.

DISCOVERY ULTRA

Automated IHC, ISH & Multiplexing

We developed the DISCOVERY Ultra based on extensive customer feedback, market research, and Ventana's industry-leading technologies to provide comprehensive capabilities not available on any other automated staining platform.

The DISCOVERY ULTRA instrument and software is adaptable to a broad array of tissue testing capabilities. From developing novel assays on low expressing biomarkers to enabling the highest level of experimental complexity, DISCOVERY ULTRA accelerates IHC and ISH research, offering innovators significant improvements in ease of use, workflow, and system flexibility.



Automation

Process slides from baking through staining in full automation for reproducible results



Accessibility

Support multiple users, multiple projects, multiple protocols at the same time



Flexibility

Run manual applications and fully automated slides of ANY assay type simultaneously



Continuity

Add bulk fluids or empty waste while the instrument is running, so you can focus on the research, not the tasks



Quality

Leverage the industry's most comprehensive menu of ready-to-use research reagents for full automation to create a broad range of sensitive, specific assays

Systems and Goods

DISCOVERY ULTRA System

- DISCOVERY Ultra Automated Stainer
- Universal Procedure Software
- Computer with monitor, keyboard and mouse, Windows 10, and running VENTANA System Software (VSS) for controlling the instrument

Universal Procedure Software	Flexible software system for designing staining protocols to run the DISCOVERY ULTRA. Updates to this software are installed free of charge for the life of the instrument.
Roche-provided Firewall Solution	The FortiGate is the approved and validated firewall for Roche Diagnostics. It is designed to separate and secure the Roche Laboratory Network from the main customer lab or hospital network. The FortiGate safeguards both the customer and the Roche instruments from Cyber-Security threats. The installation of a FortiGate is MANDATORY for all new instruments.
CareGiver Remote Support	CareGiver remote support is an automated remote monitoring and diagnostics solution that enables continuous monitoring and remote service of VENTANA instruments. CareGiver remote support enables users to maximise instrument performance and prevent workday service interruptions.
Ventana Connect	(Optional) NAVIFY Hub offers a middleware solution which provides universal LIS connectivity for Ventana's product portfolio within histology.
Universal Power Supply	It is strongly recommended, but not required, that the PowerVar UPS (material # 03155102002) be used in concert with all TD staining instruments
Advanced Cell Diagnostics (ACD) software module license	Enables software module for running ACD RNAScope and BASEscope probes for mRNA detection.
Installation and Implementation Process	Roche Field Application Specialist will set up instrument, and verify correct instrument operation.

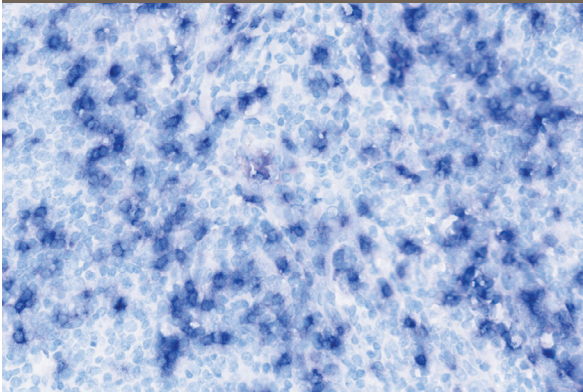
DISCOVERY products are for Research Use Only. Not for use in diagnostic procedures.

Detection

Choose from four detection technologies for the best possible performance with your specific application.

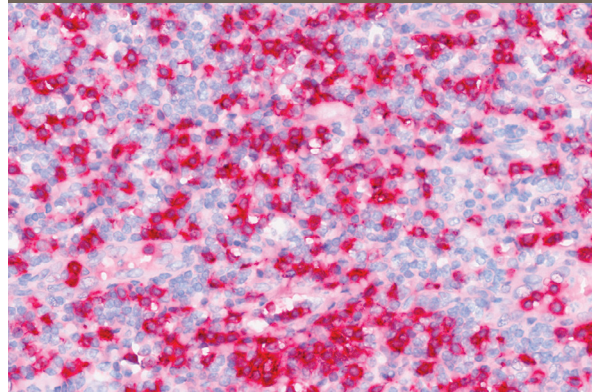
BIOTIN

works universally for detection of biotinylated antibodies and probes.



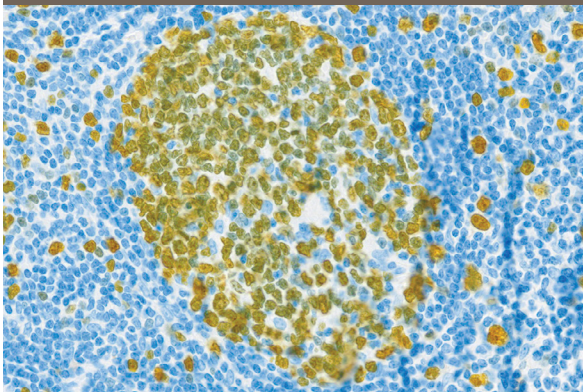
MULTIMER

for routine IHC with high sensitivity and low background.



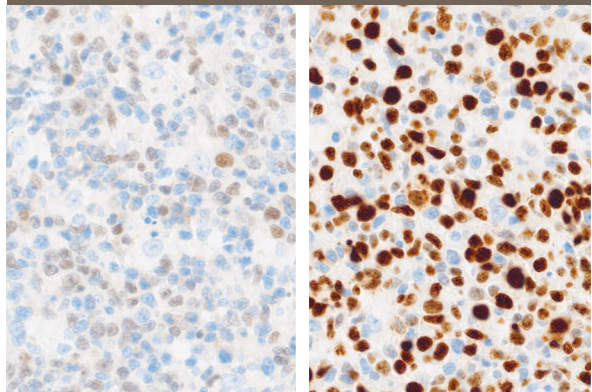
HAPTEN

very high sensitivity while maintaining low background.



AMPLIFICATION

Highest level of sensitivity through a combination of multimer and hapten technologies for detecting the most difficult targets.



Without amplification

With amplification

MULTIMER

High sensitivity, low background

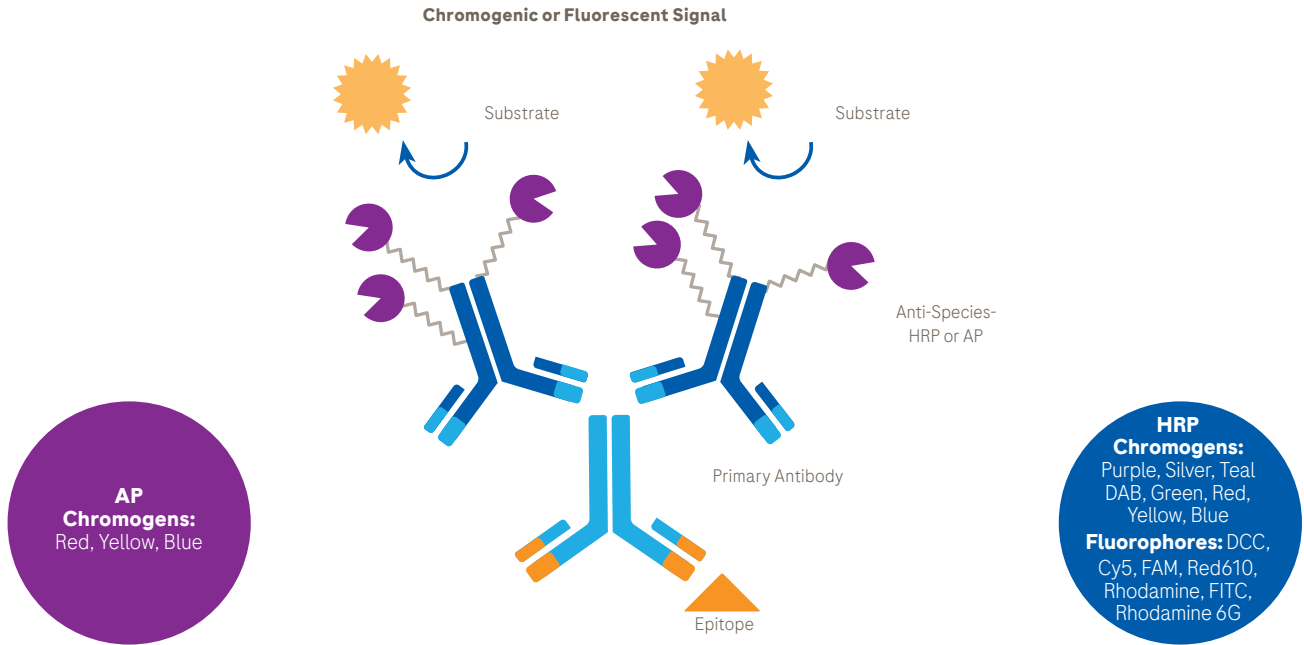
OmniMAP

HRP
Mouse, Rabbit, Rat, Goat

UltraMAP

HRP **AP**
Mouse, Rabbit, Rat, Goat Mouse, Rabbit

Multimer technology produces increased signal for both chromogenic and fluorescent applications. OmniMAP is for everyday use, while UltraMAP offers greater signal and an alkaline phosphatase option when needed. Multimer technology is biotin free, thus eliminating biotin blocking steps!

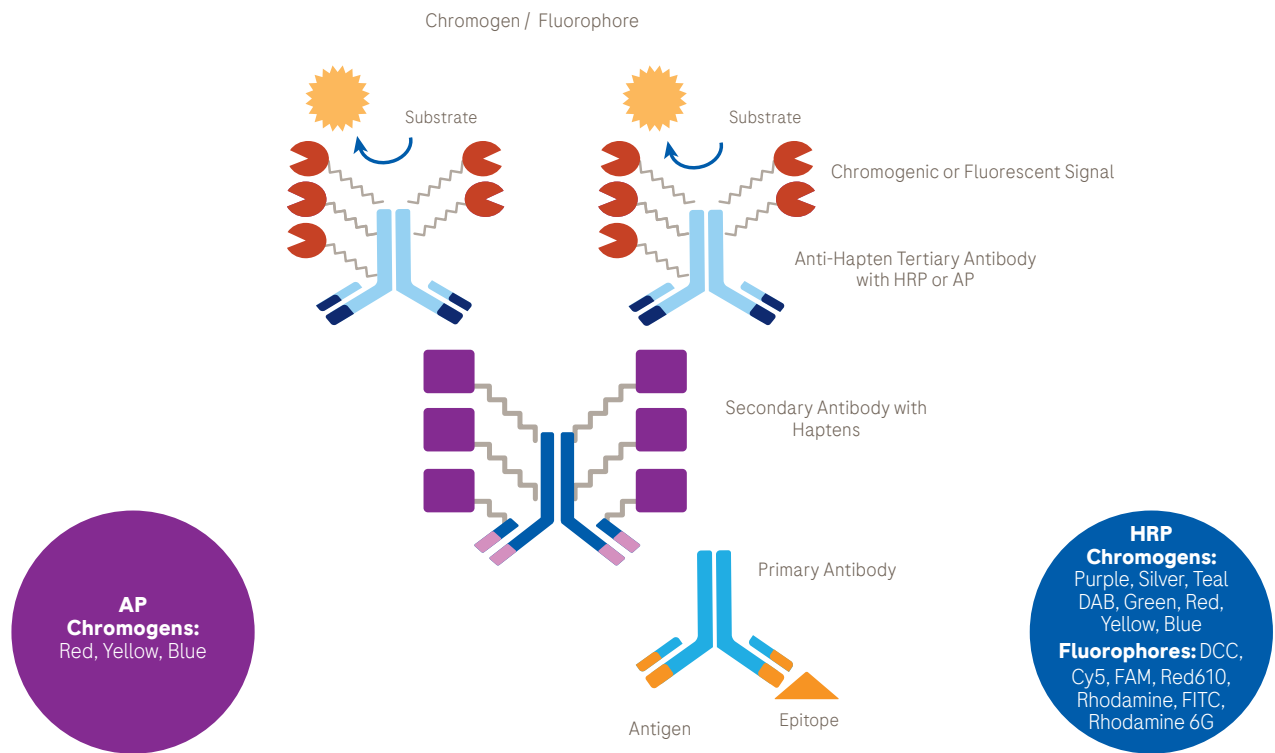


Multimer detection HRP/AP kits		
Product name	Ordering code	Quantity
Multimer OmniMAP HRP		
Anti-Mouse	05269652001	125 tests
Anti-Rabbit	05269679001	125 tests
Anti-Goat	06607233001	50 tests
Anti-Rat	05891892001	125 tests
Multimer UltraMAP HRP		
Anti-Mouse	05269695001	125 tests
Anti-Rabbit	05269717001	125 tests
Anti-Goat	06607241001	50 tests
Anti-Rat	05891884001	125 tests
Multimer UltraMAP AP		
Anti-Mouse	05269687001	125 tests
Anti-Rabbit	05269709001	125 tests

DISCOVERY products are for Research Use Only. Not for use in diagnostic procedures.

HAPTEN Increased sensitivity	
NP	HQ
AP Mouse, Rabbit	HRP Mouse, Rabbit

The unique and powerful DISCOVERY hapten-linked detection systems offer the highest level of sensitivity and specificity available on the DISCOVERY research platforms. Designed with the researcher in mind, our hapten-linked detection family includes both DISCOVERY HQ-HRP and DISCOVERY NP-AP detection, so you can use any of our DISCOVERY chromogen or fluorophore kits in order to meet your staining needs. Make them your go-to detection kits for reliable, high-quality staining from your most straightforward to your most challenging projects.



Hapten detection kits			
Product name		Ordering code	Quantity
HQ-HRP Detection			
DISCOVERY Anti-Mouse HQ		07017782001	125 tests
DISCOVERY Anti-Rabbit HQ		07017812001	125 tests
DISCOVERY Anti-HQ HRP		07017936001	125 tests
NP - Alk Phos Detection			
DISCOVERY Anti-Mouse NP		07425309001	125 tests
DISCOVERY Anti-Rabbit NP		07425317001	125 tests
DISCOVERY Anti-NP AP		07425325001	125 tests

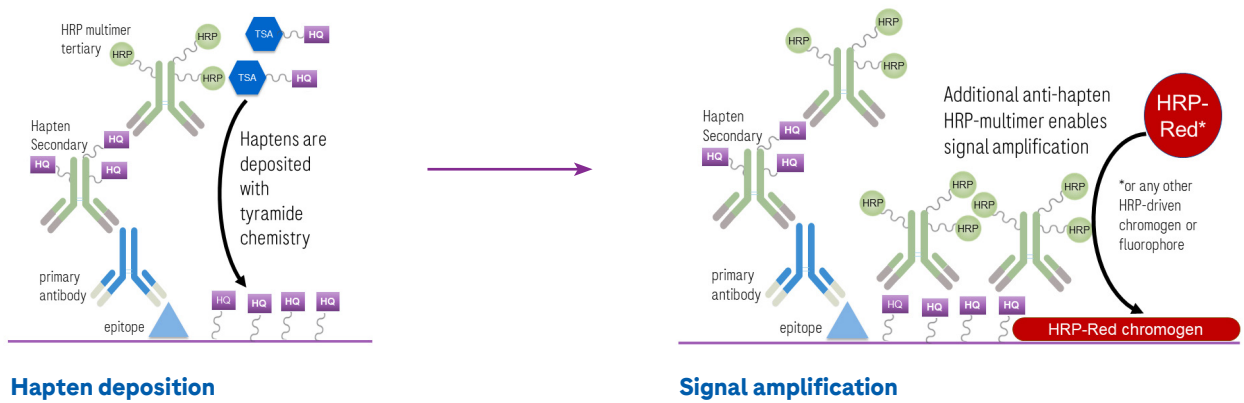
DISCOVERY products are for Research Use Only. Not for use in diagnostic procedures.

DISCOVERY Amplification

For detection of low abundance biomarkers

DISCOVERY Amplification kits revolutionise detection technology so researchers have the edge they need for their most challenging projects. DISCOVERY Amp HQ kit delivers the sensitivity needed for low abundance protein markers. DISCOVERY Amp BF kit delivers our highest degree of intensity and is designed to pinpoint low-expressing molecular targets such as miRNA. Both kits maintain exquisite specificity while true signal is dialed up to meet your project needs.

DISCOVERY HQ/BF Amplification



Amplification kits			
Product name	Ordering code	Quantity	
HQ Amplification			
DISCOVERY HQ Amp kit	06472320001	50 tests	
DISCOVERY Amp Anti-HQ AP	06472311001	50 tests	
DISCOVERY Amp Anti-HQ HRP	06442544001	50 tests	
BF Amplification			
DISCOVERY BF Amp kit	07529422001	50 tests	
DISCOVERY anti-BF HRP	07529449001	50 tests	
DISCOVERY Amp clear	07529457001	50 tests	

DISCOVERY products are for Research Use Only. Not for use in diagnostic procedures.

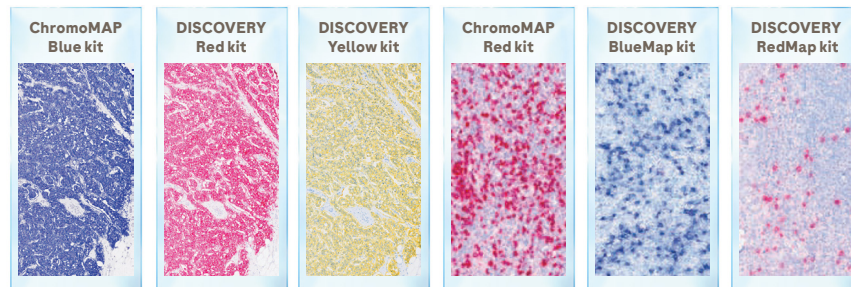
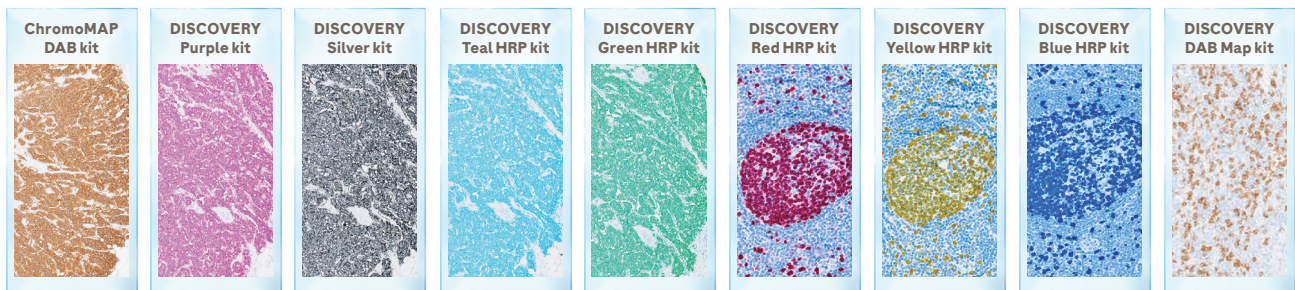
Chromogenic Detection

Clean, Crisp and Dialable

Along with traditional high-contrast chromogens of DAB and silver, Ventana has developed unique, high-performance chromogens based on fluorophores. These unique colors are ideal for IHC/ISH multiplexing and image analysis.

HRP driven chromogens		
Product name	Ordering code	Quantity
DISCOVERY ChromoMap DAB kit (RUO)	05266645001	125 tests
DISCOVERY Purple kit (RUO) *	07053983001	50 tests
DISCOVERY Silver kit (RUO) *	07053649001	50 tests
DISCOVERY Teal HRP kit*	08254338001	50 tests
DISCOVERY Green HRP kit*	08478295001	50 tests
DISCOVERY RED HRP kit*	09576819001	50 tests
DISCOVERY YELLOW HRP kit*	08502641001	50 tests
DISCOVERY BLUE HRP kit*	09582690001	50 tests
DISCOVERY Inhibitor *	07017944001	250 tests
DISCOVERY DAB Map kit (RUO)	05266360001	250 tests

AP-driven chromogens		
DISCOVERY ChromoMap Blue kit (RUO)	05266661001	125 tests
DISCOVERY Red kit (RUO)	07425333001	125 tests
DISCOVERY Yellow kit (RUO)	07698445001	50 tests
DISCOVERY ChromoMap Red kit (RUO)	05266653001	125 tests
DISCOVERY BlueMap kit (RUO)	05266327001	125 tests
DISCOVERY RedMap kit (RUO)	05266351001	250 tests

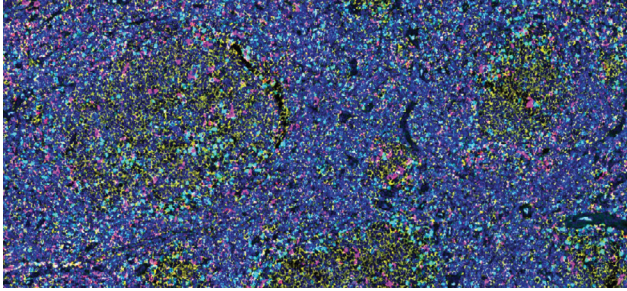


* DISCOVERY Inhibitor is required to quench endogenous peroxidases when using DISCOVERY Teal, DISCOVERY Purple, DISCOVERY Silver, DISCOVERY Green HRP, DISCOVERY Red HRP, DISCOVERY Yellow HRP, and DISCOVERY Blue HRP chromogens.

DISCOVERY products are for Research Use Only. Not for use in diagnostic procedures.

Fluorescent Detection

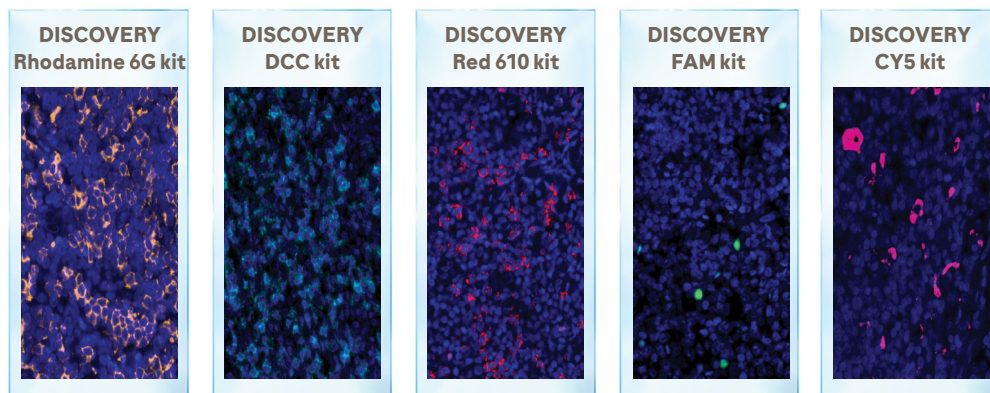
The highly photo stable signal from DISCOVERY fluorescent detection is enabled by Tyramide Signal Amplification (TSA), and lasts for months, not mere hours—even when slides are stored at room temperature. Take the worry out of IF when you experience the staying power of DISCOVERY fluorescent detection kits.



CD20(SP32) with DISCOVERY Rhodamine 6G
 CD3(SP162) with DISCOVERY DCC
 CD8(SP239) with DISCOVERY Red610
 CD68(SP251) with DISCOVERY Cy5
 FoxP3(SP97) with DISCOVERY FAM
 Stained on tonsil

DISCOVERY Immunofluorescence Detection				
Product name	Ordering code	Ex/Em*	Quantity	
DISCOVERY FITC kit (RUO)*	07259212001	Ex λ - 490nm Em λ - 525nm	50 tests	
DISCOVERY Rhodamine kit (RUO)*	07259883001	Ex λ - 542nm Em λ - 568nm	50 tests	
DISCOVERY DCC kit*	07988192001	Ex λ - 436nm Em λ - 480nm	50 tests	
DISCOVERY FAM kit*	07988150001	Ex λ - 490nm Em λ - 520nm	50 tests	
DISCOVERY Red 610 kit*	07988176001	Ex λ - 580nm Em λ - 625nm	50 tests	
DISCOVERY Rhodamine 6G kit*	07988168001	Ex λ - 546nm Em λ - 572nm	50 tests	
DISCOVERY Cy5 kit*	07551215001	x λ - 643nm Em λ - 680nm	50 tests	
DISCOVERY Inhibitor *	07017944001		250 tests	

*DISCOVERY Inhibitor is required with all DISCOVERY fluorescent detection kits.



DISCOVERY products are for Research Use Only. Not for use in diagnostic procedures.

Working Together for Spatial RNA and Protein Detection

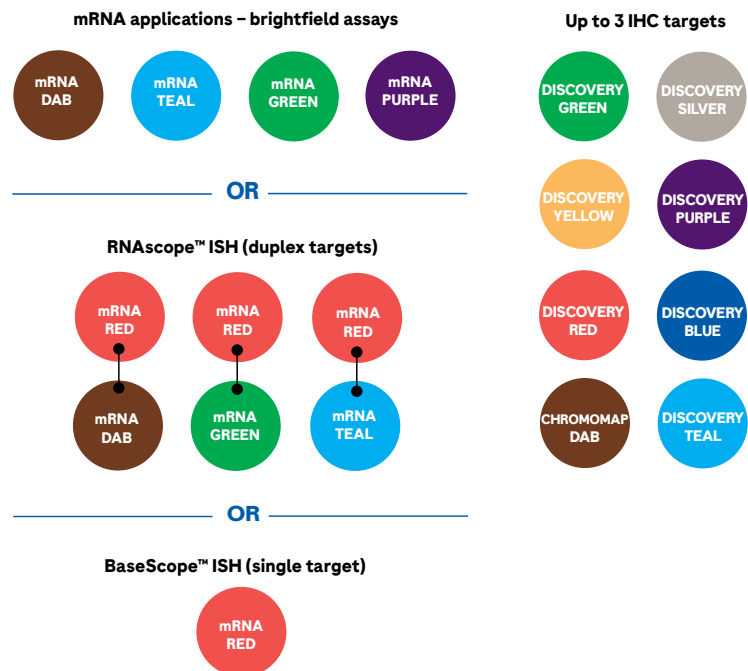
RNAscope® and BaseScope™ probes can be purchased from ACD, and used in combination with VENTANA chromogens, fluorophores, and bulk reagents for fully automated assays on the DISCOVERY ULTRA system.

Detect target RNA expression by

- ANY gene
- ANY genome
- ANY tissue/cell type with in situ hybridisation

Multiple Ways to Multiplex

Don't be limited by your detection choices. Choose the optimal chromogen or fluorophore for your specific application. Roche researchers have developed a range of new chromogens and a spectrum of fluorophores specially formulated to work with ACD probes. These detection options enable you to explore mRNA expression on a wider range of tissue types. Now you can easily see expression in pigmented tissues.



Combine IHC with ISH using either chromogens or fluorophores

ACD's RNA-protein VS Co-Detection Kit, when used with RNAscope and BaseScope Assays, determines the relationship between mRNA targets and protein expression—on the same slide.

Ancillaries

Antibody Diluents		
Product name	Ordering code	Quantity
Antibody Dilution Buffer	05280524001	250 mL bottle
Antibody Diluent with Casein	06440002001	100 mL bottle
DISCOVERY Antibody Diluent	05266319001	100 mL bottle
DISCOVERY PSS Diluent	05266815001	100 mL bottle

Blockers		
Product name	Ordering code	Quantity
DISCOVERY Antibody Block	05268869001	250 tests
DISCOVERY S-Block	05268931001	250 tests
DISCOVERY Goat Ig Block	07988214001	250 tests
DISCOVERY Inhibitor	07017944001	250 tests

Enzymes		
Product name	Ordering code	Quantity
Protease 1	05266688001	250 tests
Protease 2	05266696001	250 tests
Protease 3	05266718001	250 tests

Hybridisation Buffers / ISH diluents		
Product name	Ordering code	Quantity
HybReady	05917557001	25 mL
ISH Probe Diluent	06375375001	120 mL

Counterstains		
Product name	Ordering code	Quantity
Bluing Reagent	05266769001	250 tests
DISCOVERY QDDAPI	05268826001	125 tests
Hematoxylin	05266726001	250 tests
Hematoxylin II	05277965001	250 tests
Red Counterstain II	05272017001	100 tests

Application kits		
Product name	Ordering code	Quantity
DISCOVERY anti-DIG AP	07256302001	50 tests
DISCOVERY anti-DIG HRP	07256299001	50 tests
DISCOVERY Universal Secondary Antibody (RUO) (biotinylated)	05268877001	250 tests

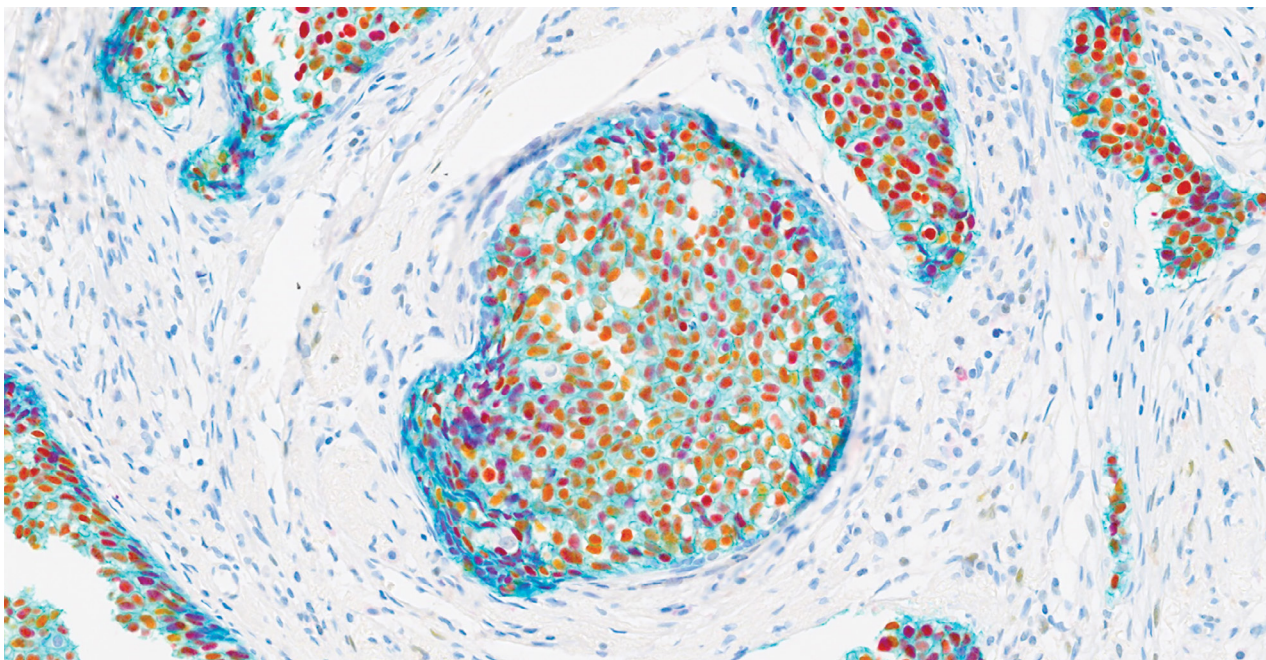
DISCOVERY products are for Research Use Only. Not for use in diagnostic procedures.

Bulks

DISCOVERY ULTRA Bulk Solutions		
Product name	Ordering code	Quantity
DISCOVERY CC1	06414575001	2 L bottle
DISCOVERY Wash (10X) (RUO)	07311079001	2 L bottle
Reaction Buffer (10X)	05353955001	2 L bottle
Silver Wash II	05446724001	2 L bottle
SSC (10X)	05353947001	2 L bottle
ULTRA LCS (Predilute)	05424534001	2 L bottle
ULTRA Cell Conditioning (ULTRA CC2)	05424542001	1 L bottle

DISCOVERY XT Bulk Solutions		
Product name	Ordering code	Quantity
Cell Conditioning 2 (CC2)	05279798001	1 L bottle
DISCOVERY CC1	06414575001	2 L bottle
DISCOVERY Wash (RUO)	07311079001	2 L bottle
Liquid Coverslip (High Temperature)	05264839001	2 L bottle
Reaction Buffer (10X)	05353955001	2 L bottle
Silver Wash II	05446724001	2 L bottle
SSC (10X)	05353947001	2 L bottle

Breast E-Cadherin (Teal), PR (purple) ER (Yellow)



DISCOVERY products are for Research Use Only. Not for use in diagnostic procedures.

User-fillables/Prep kits



Antibody User-Fillables

Product name	Ordering code	Quantity
Light Protective Prep Kit	07475144001	250 tests
Prep Kit	05250935001	250 tests

Enzyme User-Fillables

Product name	Ordering code
Reagent Dispenser Card, Enzyme 1	05271517001
Reagent Dispenser Card, Enzyme 2	05271525001
Reagent Dispenser Card, Enzyme 3	05271533001
Reagent Dispenser Card, Enzyme 4	05271541001
Reagent Dispenser Card, Enzyme 5	05271550001

Blocker User-Fillables

Product name	Ordering code
250 Test Blocker # 1	05268885001
250 Test Blocker # 2	05268893001
250 Test Blocker # 3	05268907001
250 Test Blocker # 4	05268915001
250 Test Blocker # 5	05268923001

Pretreatment User-Fillables

Product name	Ordering code
250 Test Pretreatment # 1	05280095001
250 Test Pretreatment # 2	05280109001
250 Test Pretreatment # 3	05280117001
250 Test Pretreatment # 4	05280125001

Fixative User-Fillables – continued

Product name	Ordering code
250 Test Pretreatment # 5	05280133001
250 Test Pretreatment # 6	05280141001
250 Test Pretreatment # 7	05280150001
250 Test Pretreatment # 8	05280168001
250 Test Pretreatment # 9	05280176001
250 Test Fixative # 1	05271614001
250 Test Fixative # 2	05271622001
250 Test Fixative # 3	05271649001
250 Test Fixative # 4	05271657001
250 Test Fixative # 5	05271665001

Counterstain User-Fillables

Product name	Ordering code
250 Test Counterstain # 1	05271720001
250 Test Counterstain # 2	05271738001
250 Test Counterstain # 3	05271746001
250 Test Counterstain # 4	05271754001
250 Test Counterstain # 5	05271762001

Antibody User-Fillables

Product name	Ordering code
250 Test Antibody # 1	05269857001
250 Test Antibody # 2	05269865001
250 Test Antibody # 3	05269873001
250 Test Antibody # 4	05269881001
250 Test Antibody # 5	05269890001
250 Test Antibody # 6	05269903001
250 Test Antibody # 7	05269911001
250 Test Antibody # 8	05269920001
250 Test Antibody # 9	05269938001
250 Test Antibody # 10	05269946001
250 Test Antibody # 11	05269954001
250 Test Antibody # 12	05269962001
250 Test Antibody # 13	05269989001
250 Test Antibody # 14	05269997001
250 Test Antibody # 15	05270006001
250 Test Antibody # 16	05270014001
250 Test Antibody # 17	05270022001
250 Test Antibody # 18	05270049001

Antibody User-Fillables – continued

Product name	Ordering code
250 Test Antibody # 19	05270057001
250 Test Antibody # 20	05270065001
250 Test Antibody # 21	05270073001
250 Test Antibody # 22	05270081001
250 Test Antibody # 23	05270090001
250 Test Antibody # 24	05270103001
250 Test Antibody # 25	05270111001
250 Test Antibody # 26	05270120001
250 Test Antibody # 27	05270138001
250 Test Antibody # 28	05270146001
250 Test Antibody # 29	05270154001
250 Test Antibody # 30	05270162001
250 Test Antibody # 31	05270189001
250 Test Antibody # 32	05270197001
250 Test Antibody # 33	05270219001
250 Test Antibody # 34	05270227001
250 Test Antibody # 35	05270235001
250 Test Antibody # 36	05270243001
250 Test Antibody # 37	05270251001
250 Test Antibody # 38	05270260001
250 Test Antibody # 39	05270278001
250 Test Antibody # 40	05270286001
250 Test Antibody # 41	05270294001
250 Test Antibody # 42	05270308001
250 Test Antibody # 43	05270316001
250 Test Antibody # 44	05270324001
250 Test Antibody # 45	05270332001
250 Test Antibody # 46	05270359001
250 Test Antibody # 47	05270367001
250 Test Antibody # 48	05270375001
250 Test Antibody # 49	05270383001
250 Test Antibody # 50	05270391001
250 Test Antibody # 51	05270405001
250 Test Antibody # 52	05270413001
250 Test Antibody # 53	05270421001
250 Test Antibody # 54	05270430001
250 Test Antibody # 55	05270448001
250 Test Antibody # 56	05270456001
250 Test Antibody # 57	05270464001

Antibody User-Fillables – continued	
Product name	Ordering code
250 Test Antibody # 58	05270472001
250 Test Antibody # 59	05270499001
250 Test Antibody # 60	05270502001
250 Test Antibody # 61	05270529001
250 Test Antibody # 62	05270537001
250 Test Antibody # 63	05270545001
250 Test Antibody # 64	05270553001
250 Test Antibody # 65	05270561001
250 Test Antibody # 66	05270570001
250 Test Antibody # 67	05270588001
250 Test Antibody # 68	05270596001
250 Test Antibody # 69	05270600001
250 Test Antibody # 70	05270618001
250 Test Antibody # 71	05270626001
250 Test Antibody # 72	05270634001
250 Test Antibody # 73	05270642001
250 Test Antibody # 74	05270669001
250 Test Antibody # 75	05270677001
250 Test Antibody # 76	05270685001
250 Test Antibody # 77	05270693001
250 Test Antibody # 78	05270707001
250 Test Antibody # 79	05270715001
250 Test Antibody # 80	05270723001
250 Test Antibody # 81	05270731001
250 Test Antibody # 82	05270740001
250 Test Antibody # 83	05270758001
250 Test Antibody # 84	05270766001
250 Test Antibody # 85	05270774001
250 Test Antibody # 86	05270782001
250 Test Antibody # 87	05270804001
250 Test Antibody # 88	05270812001
250 Test Antibody # 89	05270839001
250 Test Antibody # 90	05270847001
250 Test Antibody # 91	05270855001
250 Test Antibody # 92	05270863001
250 Test Antibody # 93	05270871001
250 Test Antibody # 94	05270880001
250 Test Antibody # 95	05270898001
250 Test Antibody # 96	05270901001

Antibody User-Fillables – continued	
Product name	Ordering code
250 Test Antibody # 97	05270910001
250 Test Antibody # 98	05270928001
250 Test Antibody # 99	05270936001
250 Test Antibody # 100	05270944001
250 Test Antibody # 101	05270952001
250 Test Antibody # 102	05270979001
250 Test Antibody # 103	05270987001
250 Test Antibody # 104	05270995001
250 Test Antibody # 105	05271002001
250 Test Antibody # 106	05271029001
250 Test Antibody # 107	05271037001
250 Test Antibody # 108	05271045001
250 Test Antibody # 109	05271053001
250 Test Antibody # 110	05271061001
250 Test Antibody # 111	05271070001
250 Test Antibody # 112	05271088001
250 Test Antibody # 113	05271096001
250 Test Antibody # 114	05271100001
250 Test Antibody # 115	05271118001
250 Test Antibody # 116	05271126001
250 Test Antibody # 117	05271134001
250 Test Antibody # 118	05271142001
250 Test Antibody # 119	05271169001
250 Test Antibody # 120	05271177001
250 Test Antibody # 121	05271185001
250 Test Antibody # 122	05271193001
250 Test Antibody # 123	05271207001
250 Test Antibody # 124	05271215001
250 Test Antibody # 125	05271223001
250 Test Antibody # 126	05271231001
250 Test Antibody # 127	05271240001
250 Test Antibody # 128	05271258001
250 Test Antibody # 129	05271266001
250 Test Antibody # 130	05271274001
250 Test Antibody # 131	05271282001
250 Test Antibody # 132	05271304001
250 Test Antibody # 133	05271312001
250 Test Antibody # 134	05271339001
250 Test Antibody # 135	05271347001

Antibody User-Fillables – continued

Product name	Ordering code
250 Test Antibody # 136	05271355001
250 Test Antibody # 137	05271363001
250 Test Antibody # 138	05271371001
250 Test Antibody # 139	05271380001
250 Test Antibody # 140	05271398001
250 Test Antibody # 141	05271401001
250 Test Antibody # 142	05271410001
250 Test Antibody # 143	05271428001
250 Test Antibody # 144	05271436001
250 Test Antibody # 145	05271444001
250 Test Antibody # 146	05271452001
250 Test Antibody # 147	05271479001
250 Test Antibody # 148	05271487001
250 Test Antibody # 149	05271495001
250 Test Antibody # 150	05271509001

Probe User-Fillables

Product name	Ordering code
250 Test Probe # 1	05279828001
250 Test Probe # 2	05279836001
250 Test Probe # 3	05279844001
250 Test Probe # 4	05279852001
250 Test Probe # 5	05279879001
250 Test Probe # 6	05279887001
250 Test Probe # 7	05279895001
250 Test Probe # 8	05279909001
250 Test Probe # 9	05279917001
250 Test Probe # 10	05279925001
250 Test Probe # 11	05279933001
250 Test Probe # 12	05279941001
250 Test Probe # 13	05279950001
250 Test Probe # 14	05279968001
250 Test Probe # 15	05279976001
250 Test Probe # 16	05279984001
250 Test Probe # 17	05279992001
250 Test Probe # 18	05280001001
250 Test Probe # 19	05280010001
250 Test Probe # 20	05280028001

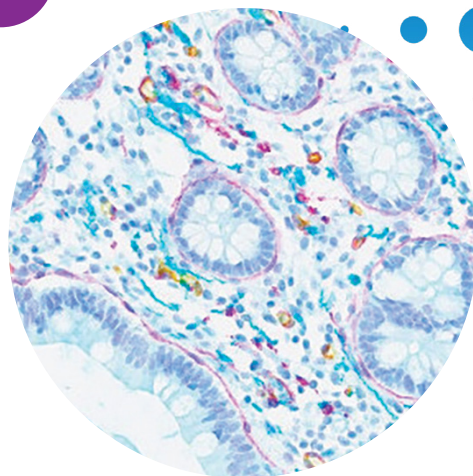
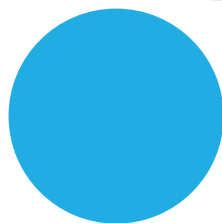
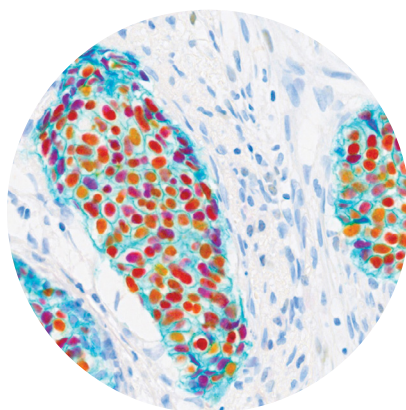
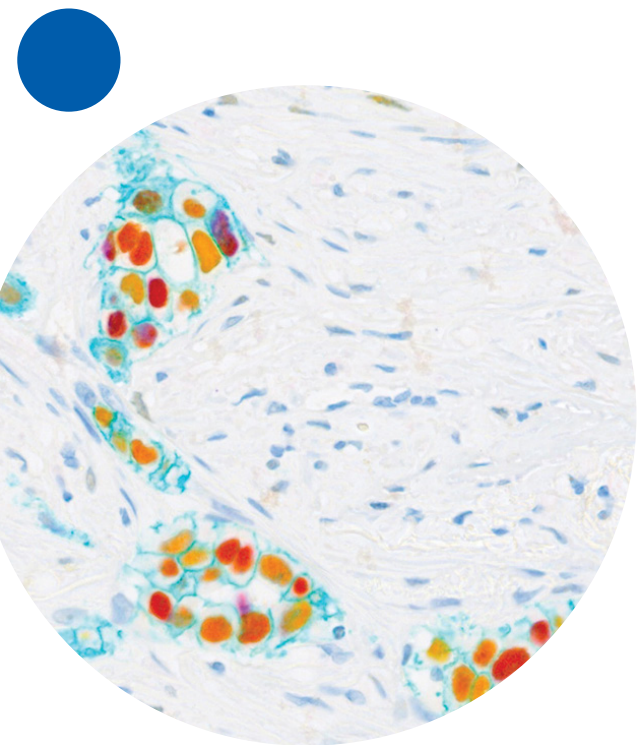
Probe User-Fillables – continued

Product name	Ordering code
250 Test Probe # 21	05280036001
250 Test Probe # 22	05280044001
250 Test Probe # 23	05280052001
250 Test Probe # 24	05280079001
250 Test Probe # 25	05280087001
250 Test Probe # 26	08258406001
250 Test Probe # 27	08258414001
250 Test Probe # 28	08258422001
250 Test Probe # 29	08258449001
250 Test Probe # 30	08258457001
250 Test Probe # 31	08258465001
250 Test Probe # 32	08258473001
250 Test Probe # 33	08258481001
250 Test Probe # 34	08258490001
250 Test Probe # 35	08258503001
250 Test Probe # 36	08258511001
250 Test Probe # 37	08258520001
250 Test Probe # 38	08258538001
250 Test Probe # 39	08258546001
250 Test Probe # 40	08258554001

Option User-Fillables

Product name	Ordering code
250 Test Option # 1	05271843001
250 Test Option # 2	05271851001
250 Test Option # 3	05271860001
250 Test Option # 4	05271878001
250 Test Option # 5	05271886001
250 Test Option # 8	05271916001

Detection Dispensers	
Product name	Ordering code
DISCOVERY Reagent Dispenser Card, Detection 1	05280192001
DISCOVERY Reagent Dispenser Card, Detection 2	05280206001
DISCOVERY Reagent Dispenser Card, Detection 3	05280214001
DISCOVERY Reagent Dispenser Card, Detection 4	05280222001
DISCOVERY Reagent Dispenser Card, Detection 5	05280249001
DISCOVERY Reagent Dispenser Card, Detection 6	05280257001
DISCOVERY Reagent Dispenser Card, Detection 7	05280265001
DISCOVERY Reagent Dispenser Card, Detection 8	05280273001
DISCOVERY Reagent Dispenser Card, Detection 9	05280281001
DISCOVERY Reagent Dispenser Card, Detection 10	05280290001
DISCOVERY Reagent Dispenser Card, Detection 11	05280303001
DISCOVERY Reagent Dispenser Card, Detection 12	05280311001
DISCOVERY Reagent Dispenser Card, Detection 13	05280320001
DISCOVERY Reagent Dispenser Card, Detection 14	05280338001
DISCOVERY Reagent Dispenser Card, Detection 15	05280346001
DISCOVERY Reagent Dispenser Card, Detection 16	05280354001
DISCOVERY Reagent Dispenser Card, Detection 17	05280362001
DISCOVERY Reagent Dispenser Card, Detection 18	05280389001
DISCOVERY Reagent Dispenser Card, Detection 19	05280397001
DISCOVERY Reagent Dispenser Card, Detection 20	05280419001



© 2023 Roche MC-IE-02340
VENTANA, NAVIFY and DISCOVERY ULTRA are trademarks of Roche.
All other product names and trademarks are the property of their respective owners.

Roche Diagnostics Limited
Charles Avenue, Burgess Hill, Sussex, RH15 9RY
Company registration number: 571546

www.diagnostics.roche.com

www.roche.com