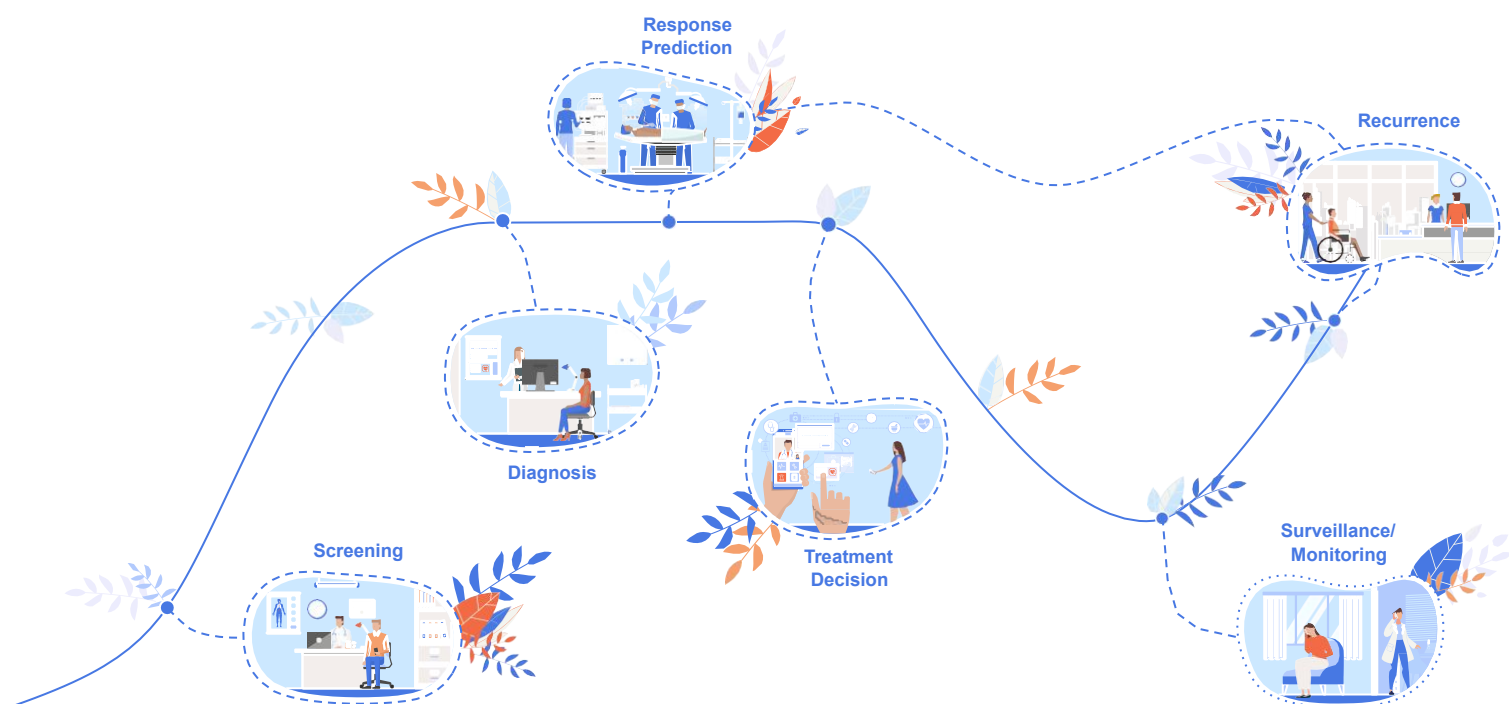
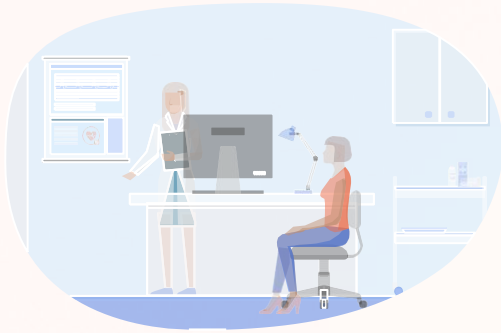


Partner with Roche along the cancer patient journey





Patient management in oncology is becoming increasingly complex

With more than 200 tumour types and an ever-increasing number of targeted therapies in oncology, the need to diagnose all patients in a timely, accurate manner is pivotal to improving care and allowing access to innovative treatment regimens¹⁻⁴



The rapid increase in medical and genomic data represents a formidable challenge for diagnostic labs and clinicians resulting in numerous options and complex decision-making⁵. Innovation at every stage of the diagnostic pathway, from screening to surveillance, is required to improve cancer patient management⁶. Data, technology and analytics provide opportunities to address healthcare challenges, accelerate R&D and ultimately better patient outcomes⁶

*With you, for the patient
every step of the way*

Why partner with Roche?

Based on our longstanding commitment to cancer care, Roche brings expertise and innovation across our wide portfolio spanning clinical research, diagnostic tools, digital offerings and comprehensive genomic profiling solutions⁷

- 1** Our complementary technologies such as immuno(histo)chemistry, PCR and next-generation sequencing (tissue & liquid) are essential to improve patient management along the entire disease journey⁷
- 2** Comprehensive genomic profiling provides deeper insights into disease and novel therapeutic targets⁸
- 3** Clinical decision support tools and analytics provide new sources of real-world data that improve workflows and support evidence-based clinical decision making⁹
- 4** Combining artificial intelligence with imaging analysis to ensure the right patient gets the right treatment, trailblazing precision diagnosis⁷

Examples of our partnership include:^{8,10-12}

Research & early access:
 - Early involvement and pre-launch access programmes
 - Clinical research support

Data & digitalisation:
 - Digital Pathology open environment for algorithm co-creation






Roche Healthcare Consulting:
 - Workflow optimisation
 - Patient journey mapping & optimisation
 - Support value-based healthcare

Medical & scientific support:
 - Multidisciplinary educational programmes and training
 - Scientific consultation and information

Market access:
 - Support health-economic studies
 - Optimisation funding & reimbursement strategies

Networking:
 - Connecting people, ideas and partners together

Clinical diagnostics, decision support & research tools

Screening 		Cervical cancer screening & triaging	cobas® HPV CINtec® PLUS Cytology
Diagnosis 		H&E staining Immunochemistry Immunohistochemistry panels Next-generation sequencing (tissue & liquid) <i>Comprehensive genomic profiling</i> Digital pathology	VENTANA HE 600 automated staining system Elecsys® portfolio (e.g. ProGRP, NSE, CEA and CYFRA 21-1) VENTANA indication specific panels & primary antibodies AVENIO ctDNA/ttDNA assays* KAPA portfolio for DNA/RNA library preparation and target enrichment* FoundationOne® CDx FoundationOne® Liquid CDx FoundationOne® Heme AVENIO Tumour Tissue CGP Kit* navify® Digital Pathology*
Response Prediction 		Immunohistochemistry panels Next-generation sequencing (tissue & liquid) <i>Comprehensive genomic profiling</i> Polymerase chain reaction Digital pathology	VENTANA high medical value assays (e.g. PD-L1, ALK, HER2, ER/PR, MMR) AVENIO ctDNA/ttDNA panels* KAPA portfolio for DNA/RNA library preparation and target enrichment* FoundationOne® CDx FoundationOne® Liquid CDx FoundationOne® Heme AVENIO Tumour Tissue CGP Kit* cobas® Mutation Test (e.g. KRAS, PIK3CA, EGFR) cobas® EGFR Mutation Test v2 (ctDNA) navify® Digital Pathology (including Algorithms)
Treatment Decisions 		Clinical decision support	navify® Decision support portfolio* Foundation Medicine Molecular Tumour Board
Surveillance & Monitoring 		Immunochemistry Next-generation sequencing (tissue & liquid) <i>Comprehensive genomic profiling</i> Polymerase chain reaction	Elecsys® portfolio (e.g. ProGRP, NSE, CEA & CYFRA 21-1) AVENIO ctDNA/ttDNA panels* KAPA portfolio for DNA/RNA library preparation and target enrichment* FoundationOne® CDx FoundationOne® Liquid CDx FoundationOne® Heme AVENIO Tumour Tissue CGP Kit* cobas® Mutation Test (e.g. KRAS, EGFR) cobas® EGFR Mutation Test v2 (ctDNA)

Healthcare consulting, medical and scientific support services

Contact your local Roche representative to find out how these technologies could help you with clinical and research questions

*AVENIO, KAPA and some navify products are RUO: Research Use Only. Not for use in diagnostic purposes.
 ©2023 Roche Diagnostics Limited. All rights reserved.
 All trademarks or brand names are the property of their respective owners.

Roche Diagnostics Limited
 Charles Avenue, Burgess Hill, West Sussex, RH15 9RY.
 Company registration number: 571546
 Date of preparation: July 2023
 Document number: MC-IE-02346
 For healthcare professional use only in the UK and Ireland. Not for distribution.
 diagnostics.roche.com

- www.cancerresearchuk.org/about-cancer/rare-cancers/what-rare-cancers-are Accessed 23 August 2023;
- <https://www.roche.co.uk/about/business/diagnostic-solutions> Accessed 23 August 2023;
- Suh J, et al. *Oncologist* 2018;23:776-781;
- Ali SM, et al. *Oncologist* 2016;21:762-770;
- Krzyszczak P, et al. *Technology (Singap World Sci)* 2018;6:79-100;
- <https://www.roche.com/about/strategy/personalised-healthcare> Accessed 23 August 2023;
- www.roche.com/partnering/partnering-in-a-digital-era Accessed 25 August 2023;
- www.roche.com/about/priorities/personalised-healthcare/comprehensive-genomic-profiling Accessed 18 August 2023;
- www.roche.com/media/releases/med-cor-2018-09-18 Accessed 23 August 2023;
- diagnostics.roche.com/global/en/services/roche-healthcare-consulting.html#documents Accessed 18 August 2023;
- www.roche.com/partnering/about-partnering-at-roche.htm Accessed 23 August 2023;
- <https://startupreasphere.com/> Accessed 23 August 2023.