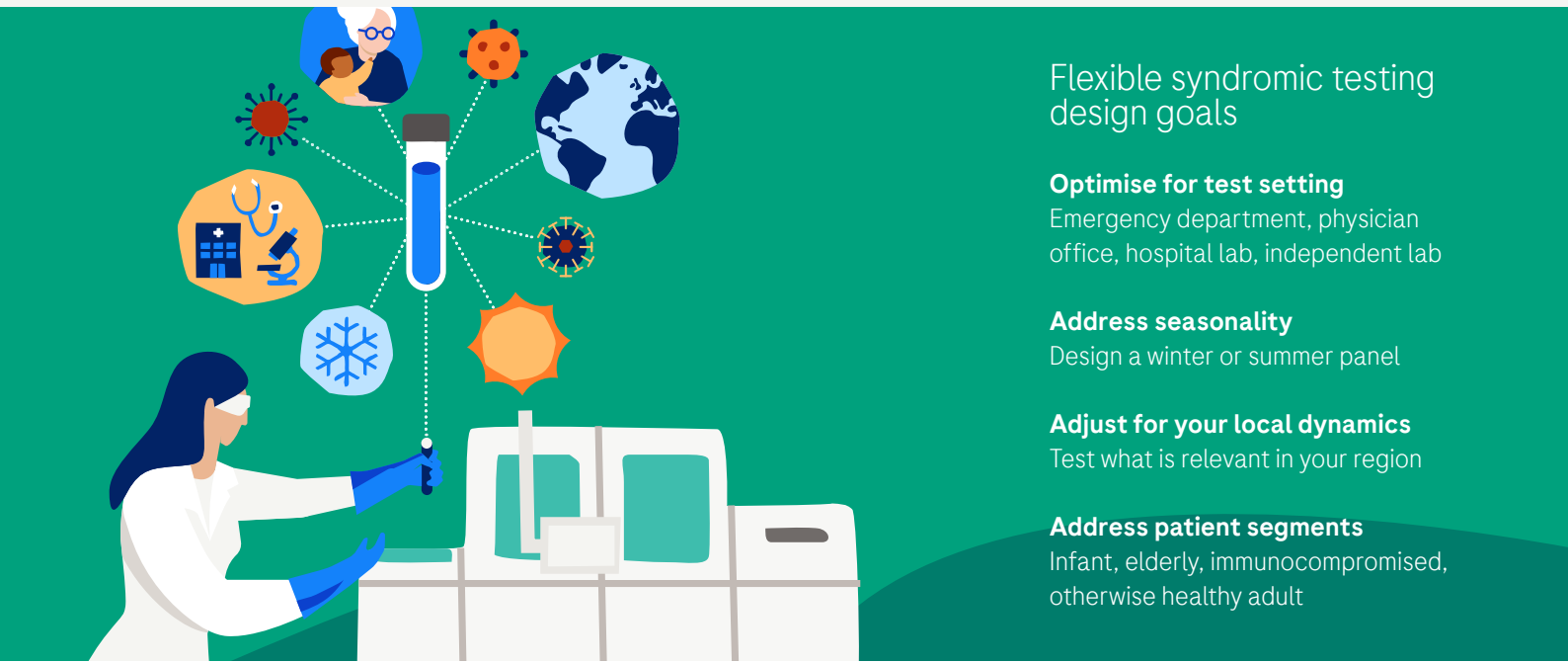


cobas® Respiratory flex

Syndromic PCR testing designed with the flexibility to test just what you need

Soon you will be able to get the medically relevant results you need from your existing Roche **cobas®** x800 system. **cobas®** Respiratory flex is designed to customise your assay based on your testing scenario variables and allow you to select full panel testing or subgroups which will include a digital reflex option.



Flexible syndromic testing design goals

Optimise for test setting
Emergency department, physician office, hospital lab, independent lab

Address seasonality
Design a winter or summer panel

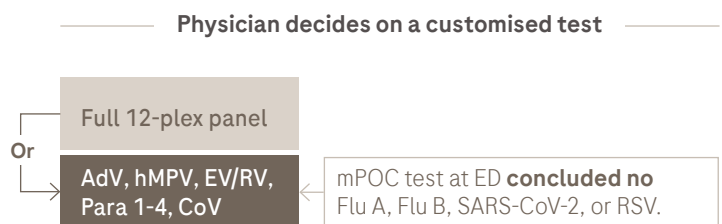
Adjust for your local dynamics
Test what is relevant in your region

Address patient segments
Infant, elderly, immunocompromised, otherwise healthy adult

The potential of a tailored approach



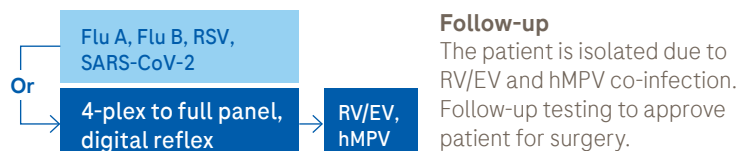
6-month-old child presents with a cough and shortness of breath. Physician orders additional results.



Typically healthy adult presents with respiratory infection symptoms at a rural clinic.



Elderly patient is in hospital for a scheduled hip replacement. The day before the surgery, she experiences symptoms of a respiratory infection.

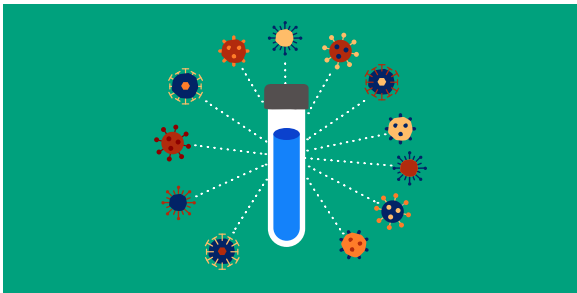


Proposed intended use

Qualitative detection and differentiation of Influenza A & B, RSV, Adenovirus (AdV), human Metapneumovirus (hMPV), Enterovirus/Rhinovirus (EV/RV) Parainfluenza 1, 2, 3 & 4, Coronavirus (229E, OC43, NL63, HKU1), SARS-CoV-2 in nasopharyngeal swab specimens from patients with signs and symptoms of respiratory infection in conjunction with clinical and epidemiological risk factors.

What will be included:

- Assay kit with 192 tests
- Positive control kit (all 12 parameters included in one control)
- EXISTING Buffer Negative Control kit



cobas® Respiratory flex can be used to **identify up to 12 viral results.**

- Flu A
- Flu B
- RSV
- SARS-CoV-2
- AdV
- hMPV
- EV/RV
- Para 1-4
- CoV



Scan QR code for Video <2 Minutes

Learn how this assay innovation is designed to strategically streamline workflow.

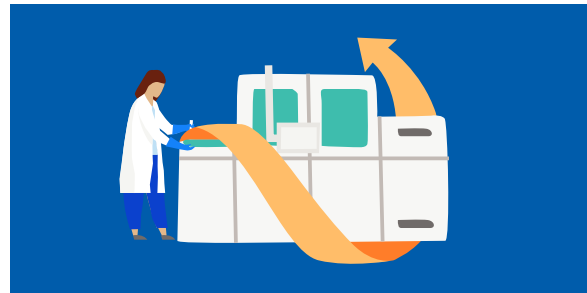
cobas® Respiratory flex for use on **cobas® 5800/6800/8800** systems is currently in development and is not commercially available.

COBAS is a trademark of Roche.

© 2024 Roche

MC--14099

diagnostics.roche.com



Your Roche instruments are ready right now.

You will just add **cobas® Respiratory flex** when it is available.

cobas® Respiratory flex for use on **cobas® 5800/6800/8800** systems is currently in development. The information in this document consists of design goals and is subject to change.