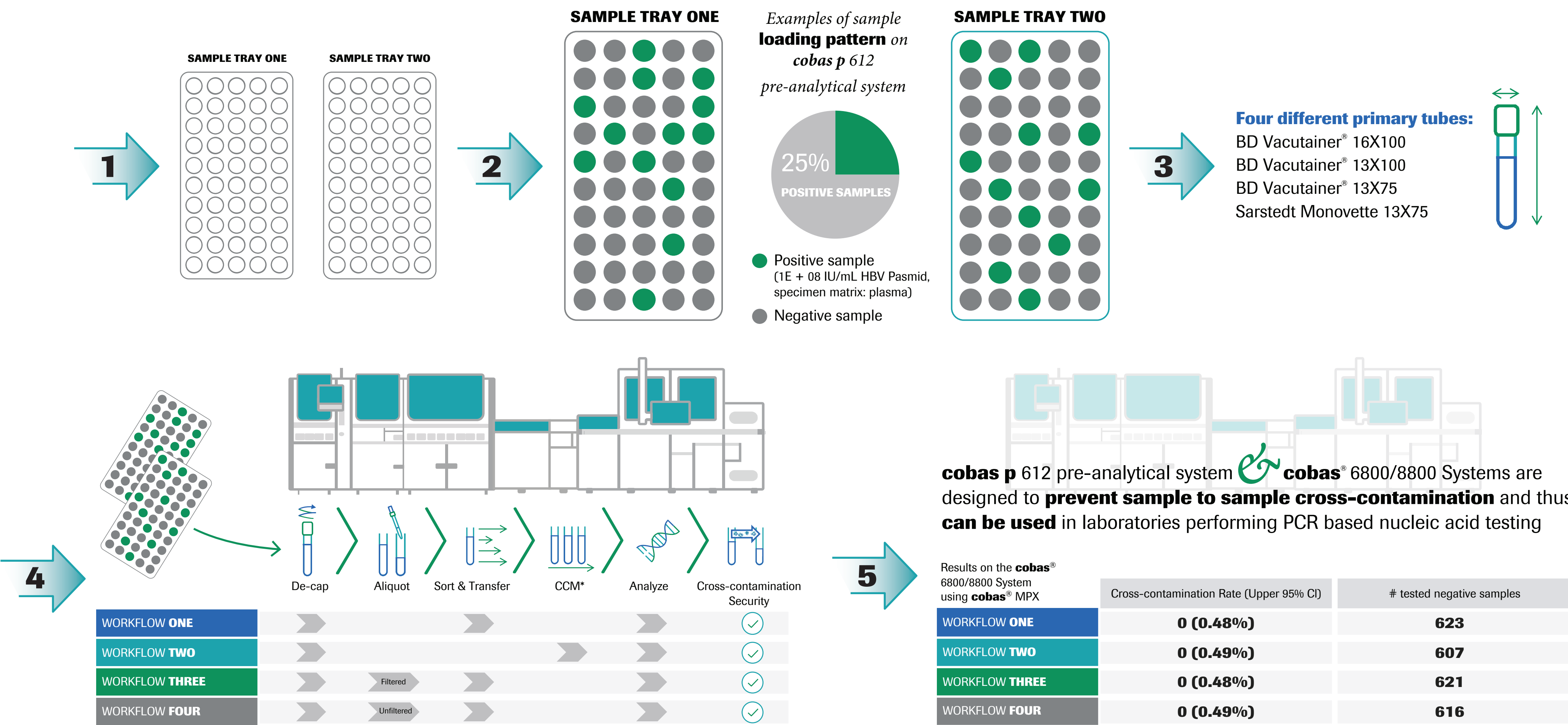


Automating Molecular Workflows at Scale

Demonstrating cross-contamination compliance for pre-analytical automation



*cobas® connection module

Cross contamination compliance testing completed for the following CCM components: Turn Table; Analyzer Connection; Linear Conveyor; Linear Buffer; Output Module; Add-On Buffer; Liasion Connection Module for CCM; Phadia 250 Connector to CCM; CCM Vertical Elevator Unit; Universal Connection Module to CCM; CCM Vertical Overhead Conveyor Unit; CCM Vertical Turntable Unit; Vertical Power Box Unit; CCM Backend Connection Unit; CCM Address Extension Unit // cobas p 512 & cobas p 612

Declaration of Serology and NAT testing compliance. Roche data on file. | Iordanoaia, N., et al. Cross-contamination Compliance of **cobas p 612** pre-analytical system in use with **cobas® 6800/8800 Systems**. Poster presented at ISBT, Dubai, UAE. | Similar studies were conducted for **cobas p 512**, which yield similar results. Roche data on file.

Roche Diagnostics Scandinavia AB, Box 1228, 171 23 Solna MC-SE-03464