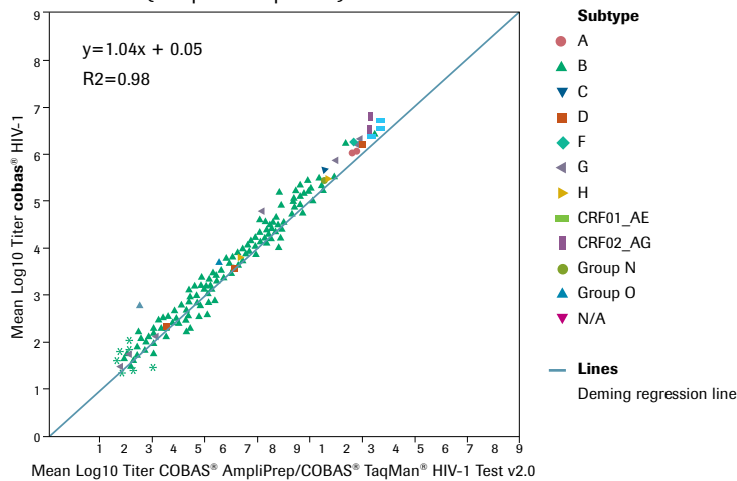


Correlation (500 µL EDTA plasma)



Precision of cobas® HIV-1 (500 µL EDTA plasma)

| Nominal concentration (cp/mL) | Assigned concentration (cp/mL) | Source material | EDTA plasma | | | |
|-------------------------------|--------------------------------|-----------------|-------------|----------|----------|--------------------|
| | | | Lot 1 SD | Lot 2 SD | Lot 3 SD | All Lots Pooled SD |
| 1.00E+07 | 8.67E+06 | Cell culture | 0.04 | 0.06 | 0.03 | 0.05 |
| 1.00E+06 | 8.67E+05 | Cell culture | 0.06 | 0.05 | 0.04 | 0.05 |
| 1.00E+05 | 8.67E+04 | Cell culture | 0.05 | 0.07 | 0.04 | 0.05 |
| 1.00E+04 | 8.67E+03 | Cell culture | 0.06 | 0.06 | 0.04 | 0.05 |
| 1.00E+03 | 8.67E+02 | Cell culture | 0.07 | 0.06 | 0.07 | 0.07 |
| 4.00E+02 | 3.47E+02 | Cell culture | 0.09 | 0.10 | 0.09 | 0.09 |
| 2.00E+02 | 1.73E+02 | Cell culture | 0.11 | 0.08 | 0.14 | 0.11 |
| 1.00E+02 | 8.67E+01 | Cell culture | 0.15 | 0.11 | 0.10 | 0.12 |

* Titer data are considered to be log-normally distributed and are analyzed following log10 transformation. Standard deviations (SD) columns present the total of the log-transformed titer for each of the three reagent lots.

cobas® HIV-1 performance summary

| Parameter | Performance |
|------------------------|--|
| Sample type | EDTA plasma |
| Sample process volume | 500 µL or 200 µL* |
| Analytical sensitivity | 13.2 cp/mL (500 µL) 35.5 cp/mL (200 µL) |
| Linear range | 500 µL: 20 cp/mL – 1.0E+07 cp/mL 200 µL: 50 cp/mL – 1.0E+07 cp/mL |
| Specificity | 100% (one-sided 95% confidence interval: 99.5%) |
| Genotypes detected | HIV-1M (A–D, F–H, CRF01_AE, CRF02_AG), HIV-1O, HIV-1N |

Performance for today; prepared for tomorrow

It takes more than just a single target to stay ahead of HIV-1. Use the dual target **cobas® HIV-1** assay to gain complete confidence in test results.

cobas® HIV-1 ordering information

| Material number | Product name | Tests per unit (cassette/bottle) |
|-----------------|--|----------------------------------|
| 07000995190 | cobas® HIV-1 | 96 |
| 06997767190 | cobas® HBV/HCV/HIV control kit | 8 runs |
| 07002220190 | cobas® NHP negative control kit | 16 runs |

Comprehensive menu for viral load testing

- [cobas® HIV-1*](#)
- [cobas® HBV*](#)
- [cobas® HCV*](#)
- [cobas® CMV*](#)

*For use with the **cobas® 6800/8800 Systems**

*200 µL processing volume not commercially available in the United States

Published by

Roche Diagnostics Scandinavia AB
Box 1228
171 23 Solna
PM2019-00459

CCOBAS, AMPLIPREP, TAQMAN and LIFE NEEDS ANSWERS are trademarks of Roche.

07354061-003 0516