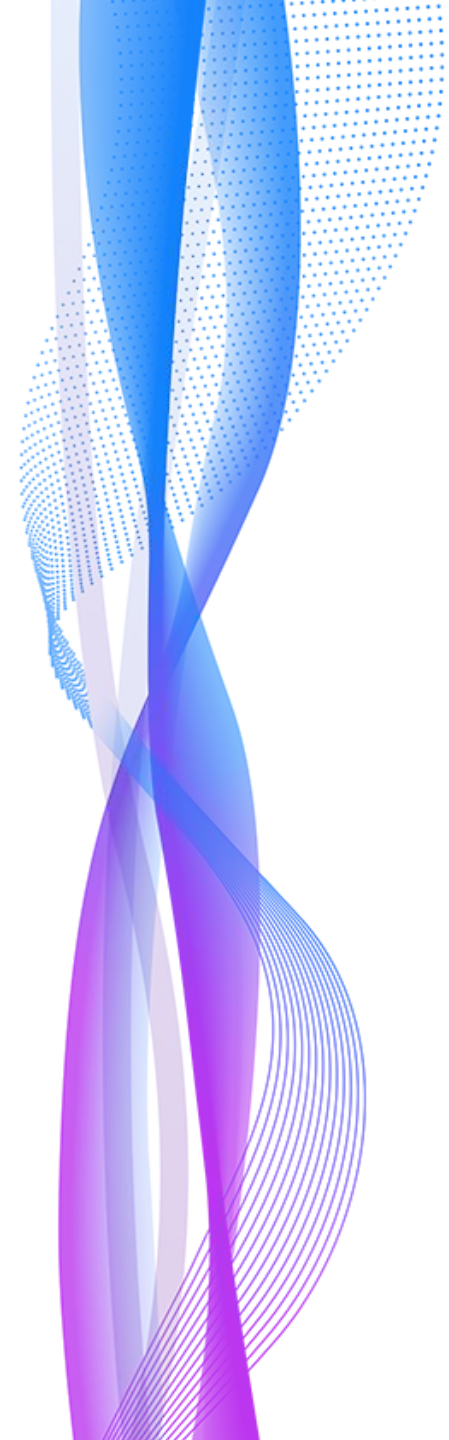


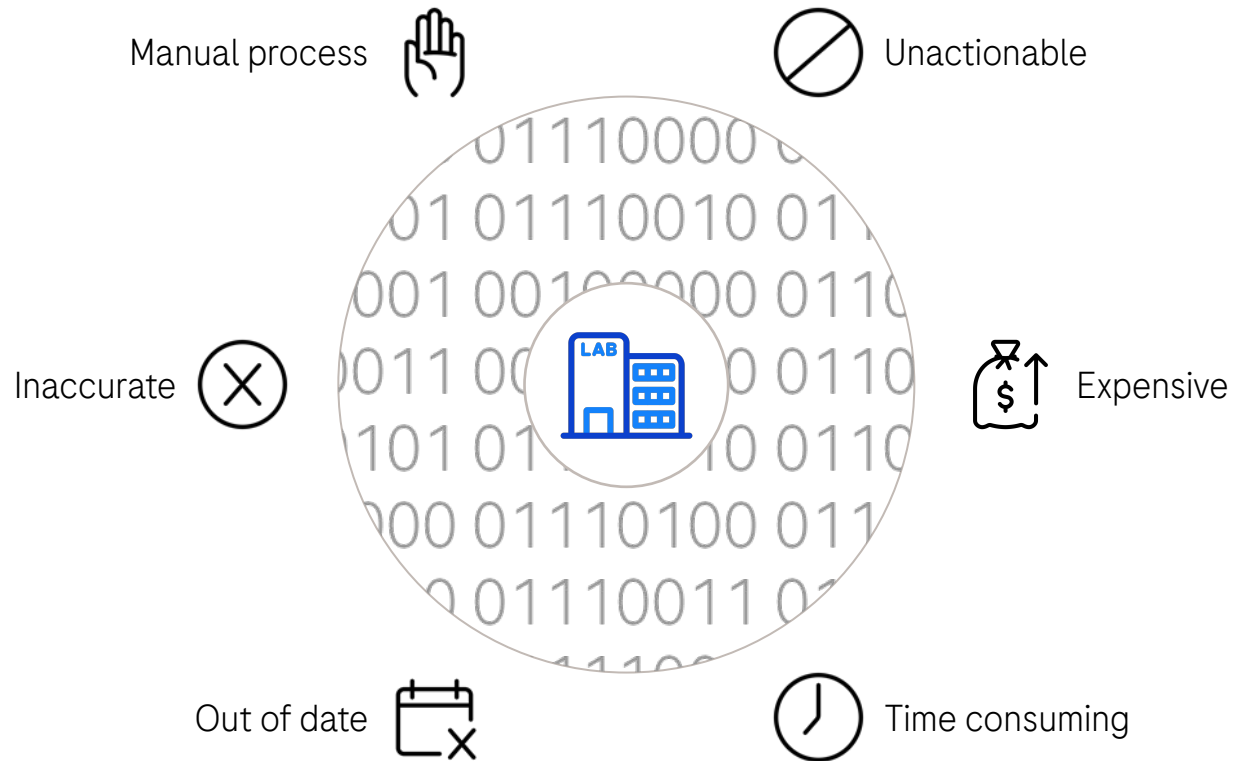


## **navify<sup>®</sup> POC Operations & navify<sup>®</sup> Analytics for POC**

Your complete POC ecosystem,  
unified, simplified all in one place.

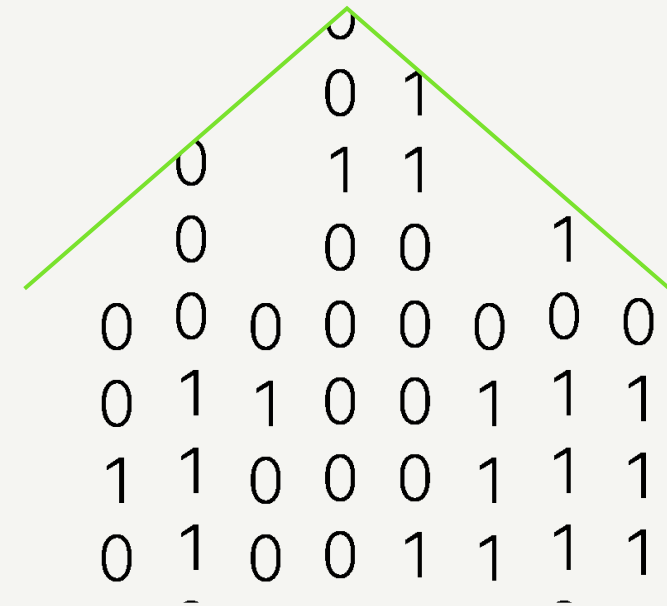


# Getting data to help optimize your lab has been a challenging task



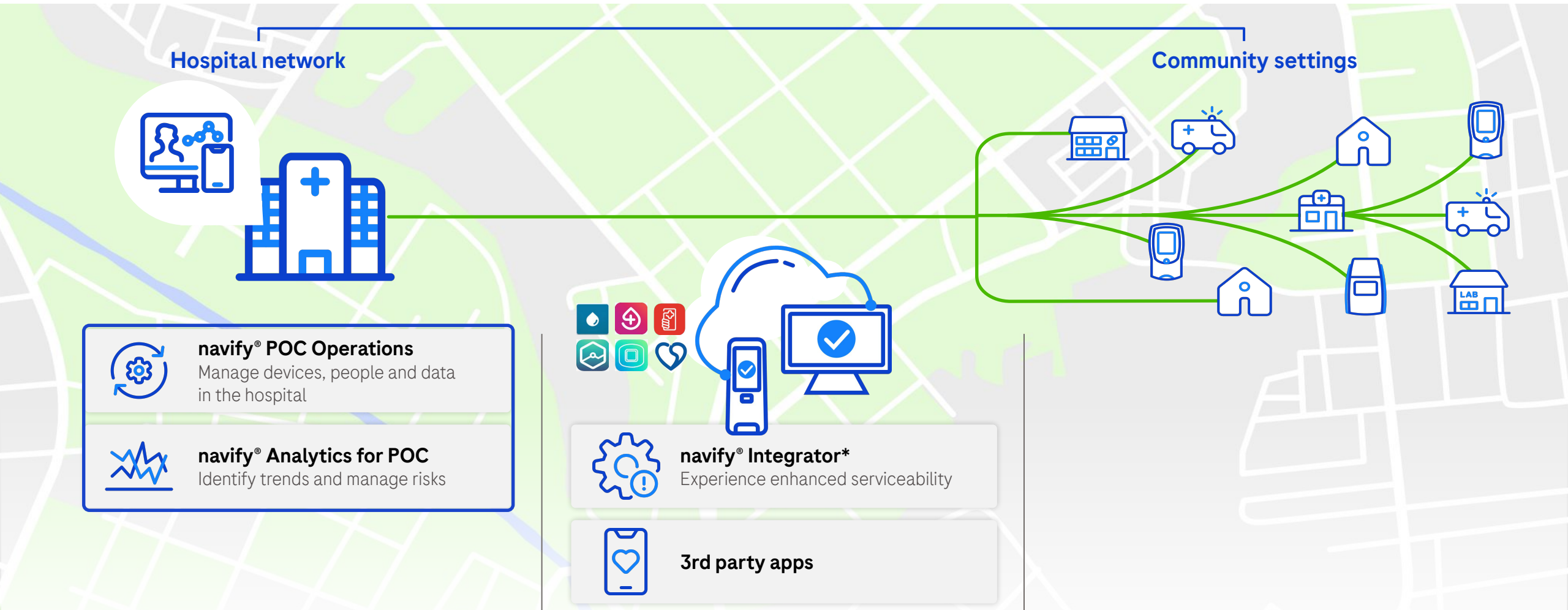
## navify<sup>®</sup> Analytics

A new vision for lab analytics



# Our POC digital solutions portfolio

Achieving operational excellence by supporting the decentralized diagnostic network

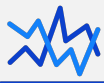


Hospital network

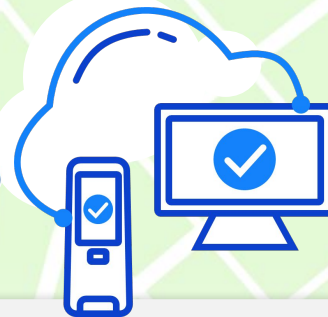
Community settings



**navify® POC Operations**  
Manage devices, people and data in the hospital



**navify® Analytics for POC**  
Identify trends and manage risks



**navify® Integrator\***  
Experience enhanced serviceability



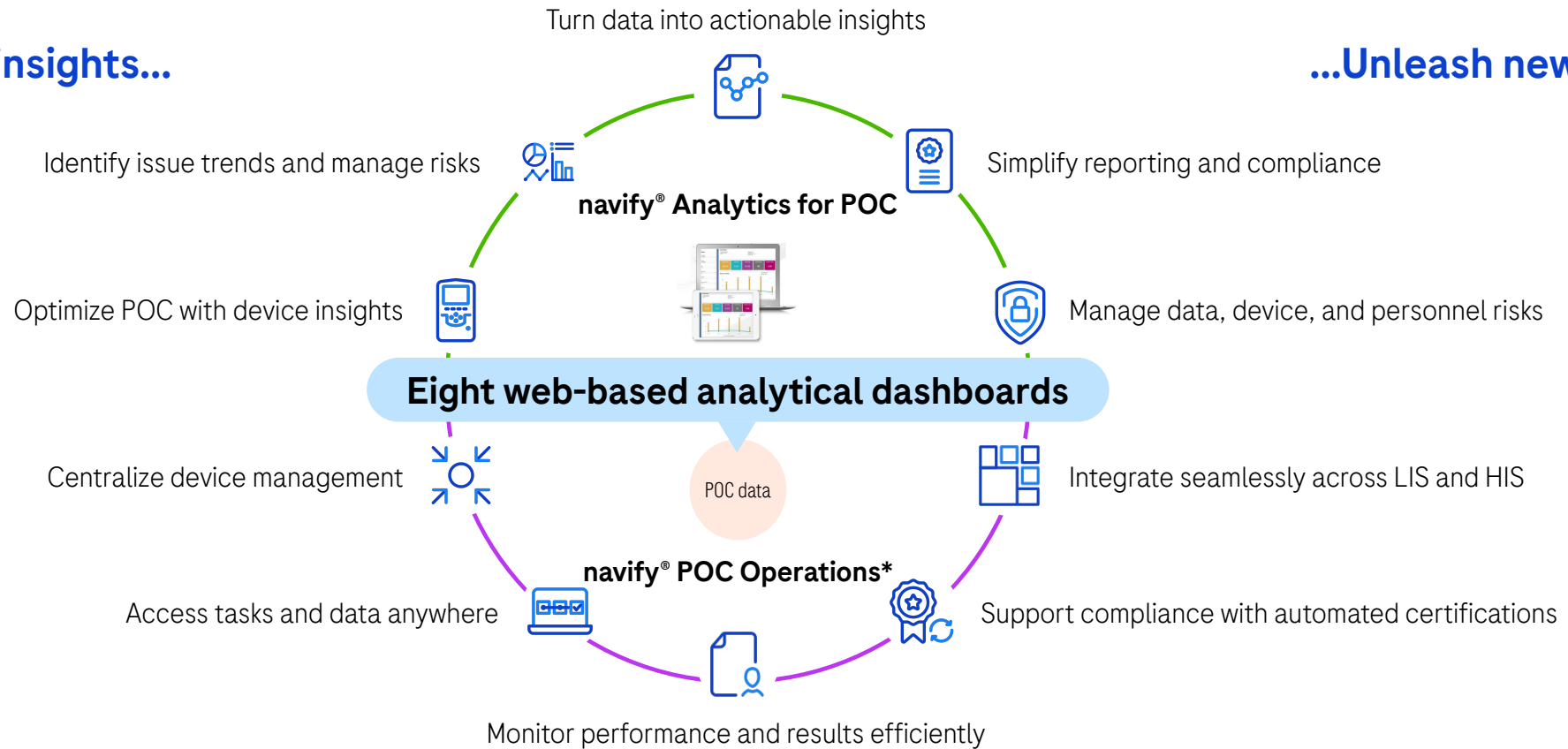
**3rd party apps**

# navify® Analytics for POC

Generating actionable insights to optimize POC management

Uncover unique insights...

...Unleash new potential.

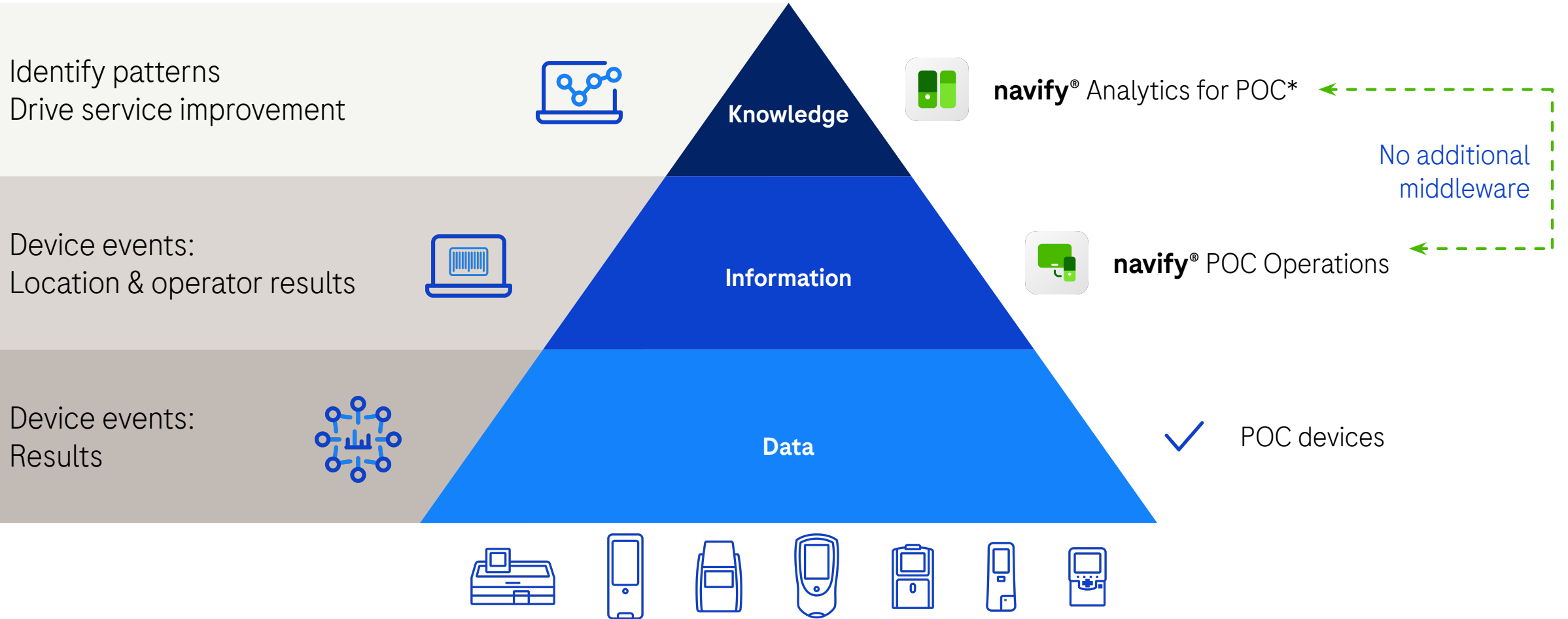


navify® Analytics empowers POC coordinators to improve POC services

\* Installation of navify® POC Operations is a mandatory requirement to install navify® Analytics for POC. No additional IT middleware needed. May not be available in all regions.  
 LIS = Laboratory Information System, HIS = Hospital Information System

# navify® Analytics provides actionable insights

Turns data into knowledge



\* Installation of navify® POC Operations is a mandatory requirement to install navify® Analytics for POC. No additional IT middleware needed. May not be available in all regions.

# Turn data into knowledge



## navify® POC Operations

- Collects and analyzes data in real-time
- Supports connectivity of 40+ devices, including third-party
- Centralizes and streamlines POC operations with a single platform
- Provides clear audit trail to help maintain compliance



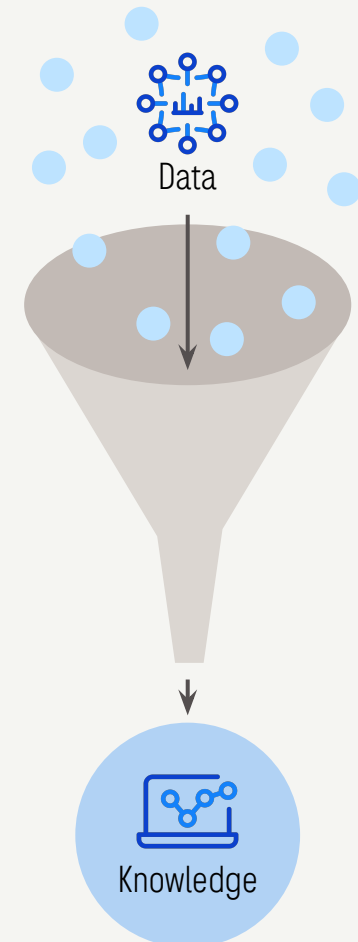
## navify® Analytics for POC

- Generates up to 5.4x more units of insights per hour than before implementing **navify**® Analytics\*<sup>1</sup>
- Identifies patterns to drive service improvement
- Automates integration of data from POC operations
- Monitors device trends to identify when troubleshooting is required

\*These results are the outcome of case studies conducted with some of our customers. These results might not be expected in every case with every customer.

1. Roche Diagnostics. Revolutionizing Device Management at DRK Kliniken Berlin: A Case Study on navify Analytics for POC. MC-14552. July 2024 [cited 2025 Aug 18].

Available from: <https://assets.navify.roche.com/f/305562/x/5484e7fbcf/navify-analytics-poc-drk-berlin-germany-whitepaper-mc-14552-1.pdf>

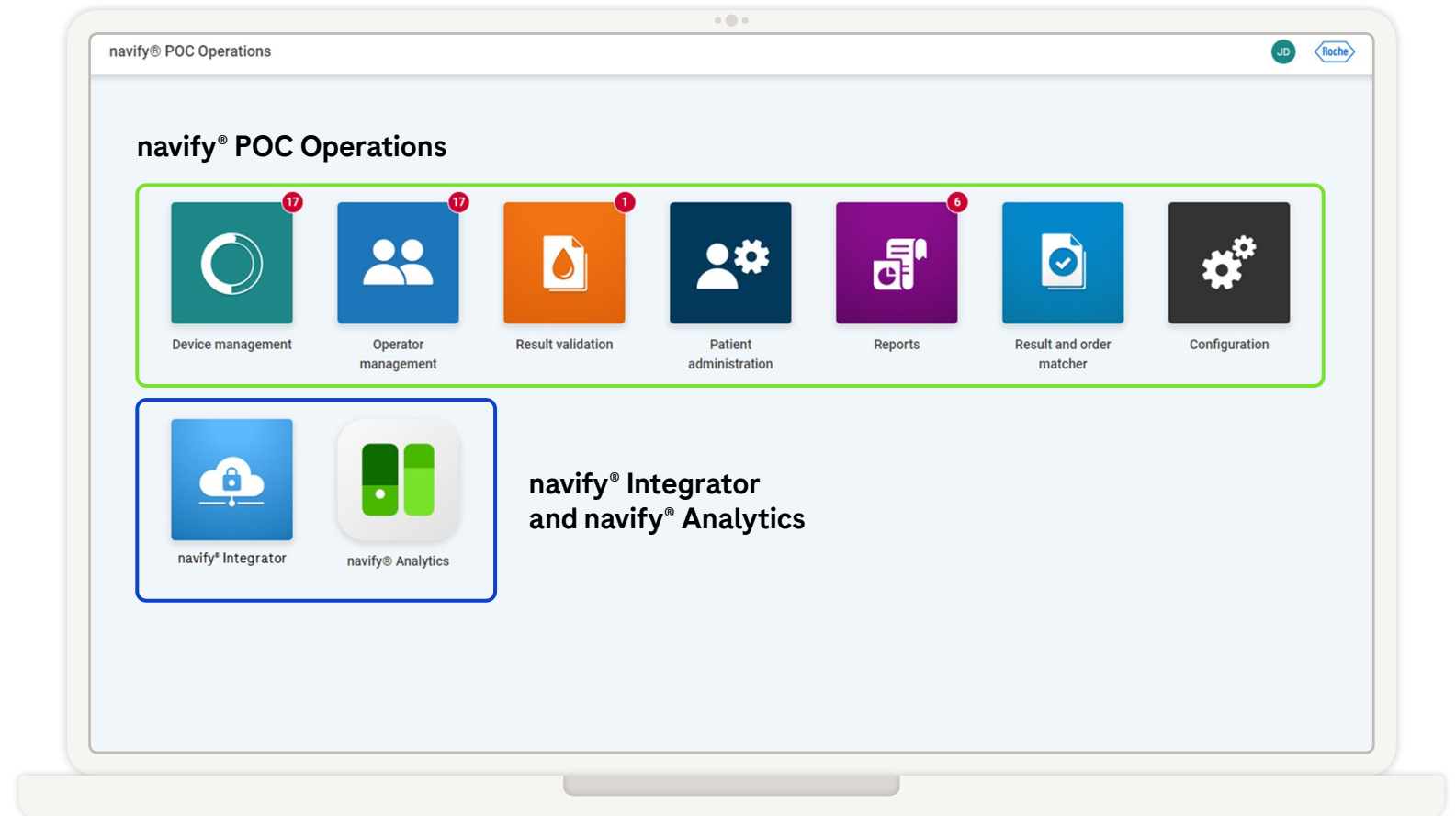


# Review. Track. Identify. All through one portal

One point of entry with Single Sign On



Your complete POC ecosystem,  
unified, simplified all in one place



# Unlocking true value with navify® Analytics for POC

Identifying operational waste to improve operational efficiency



Transforming digital data into actionable insights that help improve the operational efficiency of POC testing

# navify® Analytics for POC supports POCCs

## navify® Analytics for POC

Additional intelligence and insights to drive service improvement and support operational excellence

Intelligence on device usage



Manage devices centrally

Operator management and resource optimization



Manage staff training and certification

Secure record-keeping for safety



Manage integration with LMS & Human Resources systems

Track reporting and testing efficiency



Manage results efficiently

Spot trends and opportunities to improve



Manage testing quality automatically

## navify® POC Operations

Supplies the information to help POC coordinators (POCCs) face these day-to-day challenges

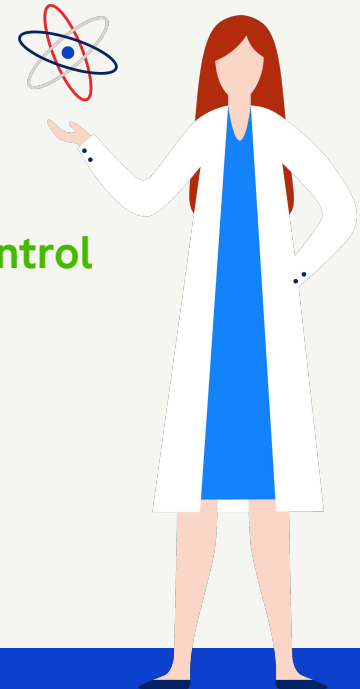
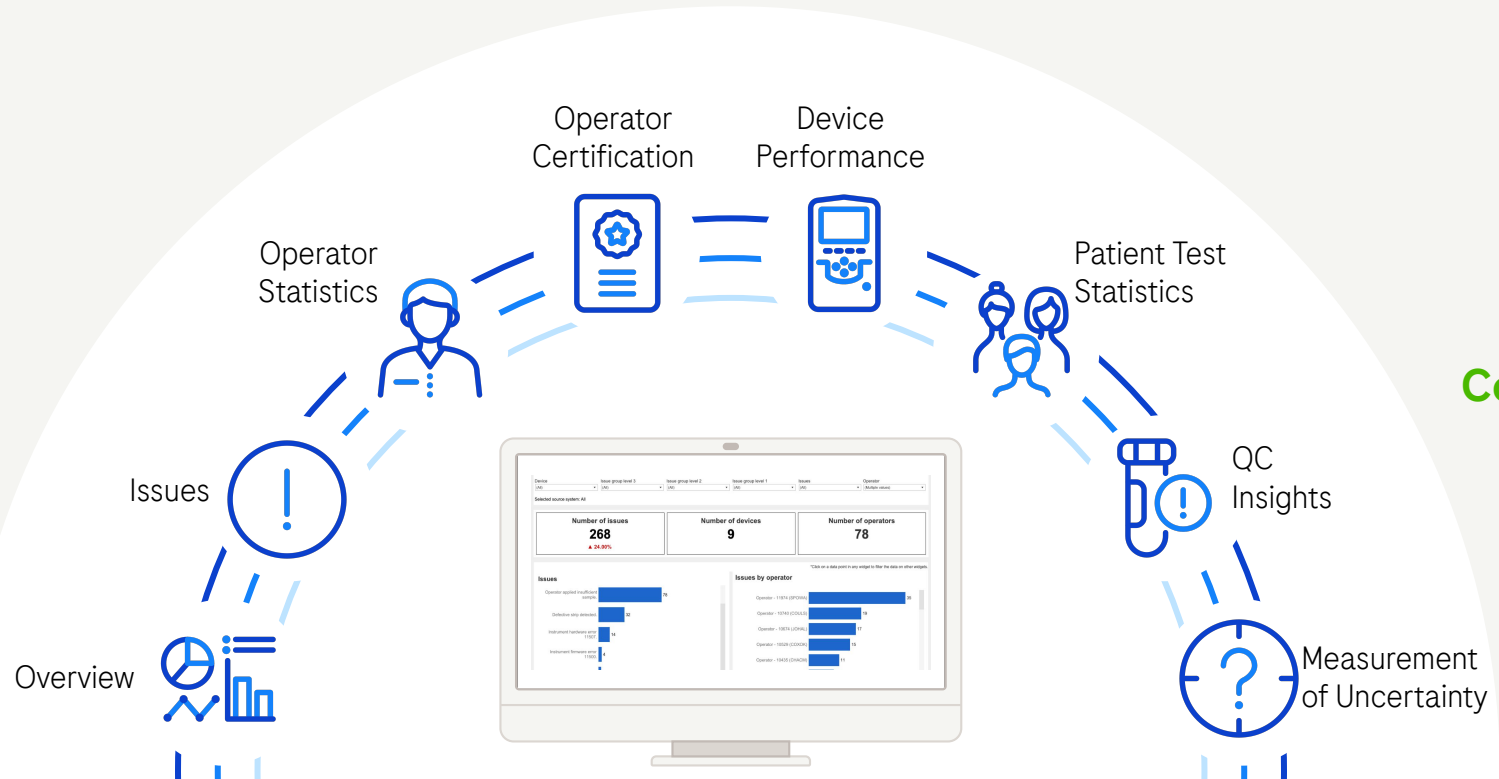
\* Installation of navify® POC Operations is a mandatory requirement to install navify® Analytics for POC. No additional IT middleware needed. May not be available in all regions.

# Identify key trends via dashboards

Configurable dashboards provide clear, targeted overviews of POC operational trends and challenges



Visibility



Control

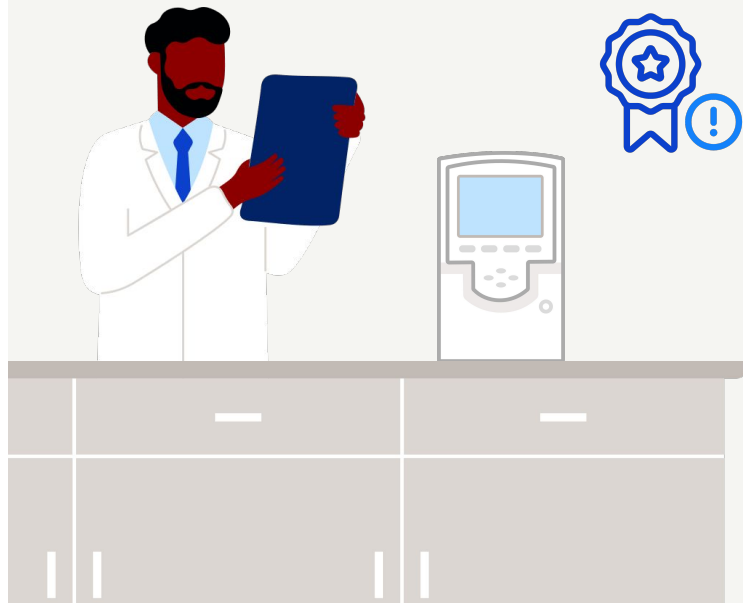
Optimize device usage, operational efficiency, and overall POC service performance

# Achieving ISO accreditation is key to POC operations

Automated reporting of MoU at the click of a button

ISO accreditation promotes quality and competence. It can be a key differentiating factor for labs in attracting customers.

Requires **measurement of uncertainty (MoU)** for POC testing accreditation



Generating data usually involves **time-consuming** manual statistics



**MoU dashboard** automates this ISO accreditation process

Parameter	Device type	QC level	_Number of QC tests	Mean	Standard deviation	Expanded uncertainty _U <sub>95</sub> x 1.96
Ca <sup>++</sup>	cobas b 123 system	Level 1	136	1.70 mmol/L	0.02	0.39
		Level 2	150	1.20 mmol/L	0.02	0.39
		Level 3	136	0.71 mmol/L	0.01	0.20
Cl <sup>-</sup>	cobas b 123 system	Level 1	129	81.82 mmol/L	0.02	1.00
		Level 2	136	88.88 mmol/L	0.12	1.00
		Level 3	128	115.46 mmol/L	0.04	1.00
GGlu	cobas b 123 system	Level 1	136	22.75 %	0.27	0.52
		Level 2	150	18.89 %	0.24	0.47
		Level 3	136	3.89 %	0.20	0.46
Glu (PG)	cobas b 123 system	Level 1	133	6.00 mmol/L	0.10	0.36
		Level 2	124	2.30 mmol/L	0.11	0.36
		Level 3	136	23.73 mmol/L	0.07	0.96
Glu F	ACS E	Level 1	1,206	2.53 mmol/L	0.01	1.00
		Level 2	1,200	16.88 mmol/L	0.27	0.61



Simplifying accreditation



Saving time

# Potential time savings with MoU dashboard

Accelerate insights with automated MoU calculations

## Before using navify® Analytics for POC<sup>1,2</sup>



Extract data

60 min



Manually collect IQC data in spreadsheet & calculate SD

90 min



Summarize in report

5 min

155 min

## After using navify® Analytics for POC<sup>1,2</sup>



Log in to navify® Analytics & access the MOU dashboard

10 min



Summarize in report

5 min

15 min



**Data automatically integrated** from navify® POC Operations



**Dashboards automatically generated** by navify® Analytics for POC

IQC = Internal quality control, SD = Standard deviation

1. Roche Diagnostics. The Doctors Laboratory leads digitalisation in navify® Analytics for POC integration with cobas® infinity POC. MC-10126. Oct 2022 [cited 2025 Aug 18].

Available from: [https://lableaders.roche.com/content/dam/diagnostics\\_microsites/lab-leaders/blueprint/en/pdfs/navify-case-study-analytics-for-poc-tl-uk-mc--10126.pdf](https://lableaders.roche.com/content/dam/diagnostics_microsites/lab-leaders/blueprint/en/pdfs/navify-case-study-analytics-for-poc-tl-uk-mc--10126.pdf)

2. Roche Diagnostics. navify® Analytics for POC. MC-14500. Aug 2024 [cited 2025 Aug 18]. Available from: <https://assets.navify.roche.com/f/305562/x/80f3e0e632/navify-analytics-for-poc-tl-uk-whitepaper-mc-14500.pdf>

# Demonstrating the impact of navify® Analytics for POC through a case study

The Doctors Laboratory (TDL), UK

## Main goals

- Increase the uptime and availability of TDL POC devices for clinical use
- Limit the impact for members of the POC department



Increased  
**34%**

Average test volumes per POC devices  
*In 3 months*



Reduced  
**31%**

Total number of device issues decreased  
*In 3 months*



>200,000 POCT results annually



POCT service across 70 private hospitals



>11,000 Clinical Users



> 750 POCT Devices



**Chris Sweetman-Wright**  
TDL Point of Care Operations Manager, UK

*“With the overview dashboard we can easily monitor device usage and operators across multiple device types and sites to ensure an optimal service.”*

Source: Roche Diagnostics. The Doctors Laboratory leads digitalisation in navify® Analytics for POC integration with cobas® ininity POC. MC-10126. Oct 2022 [cited 2025 Aug 18].

Available from: [https://lableaders.roche.com/content/dam/diagnostics\\_microsites/lab-leaders/blueprint/en/pdfs/navify-case-study-analytics-for-poc-tdl-uk-mc-10126.pdf](https://lableaders.roche.com/content/dam/diagnostics_microsites/lab-leaders/blueprint/en/pdfs/navify-case-study-analytics-for-poc-tdl-uk-mc-10126.pdf)

Individual lab results may vary, and testimonials are not claimed to represent typical results. All testimonials are real participants, may not reflect the typical purchaser's experience and are not intended to represent or guarantee that anyone will achieve the same or similar results.

# navify<sup>®</sup> Analytics for POC

Take operational excellence to the next level



## Empowerment

Provides insights and transparency into lab operations to empower informed decisions and effective POC service management



## Productivity

Enables tracking, review and analysis of POC trends to proactively identify and course correct issues to optimize lab performance



## Simplification

Generates customized reports with a flexible, easy-to-use tool, giving labs the right insights, at the right time

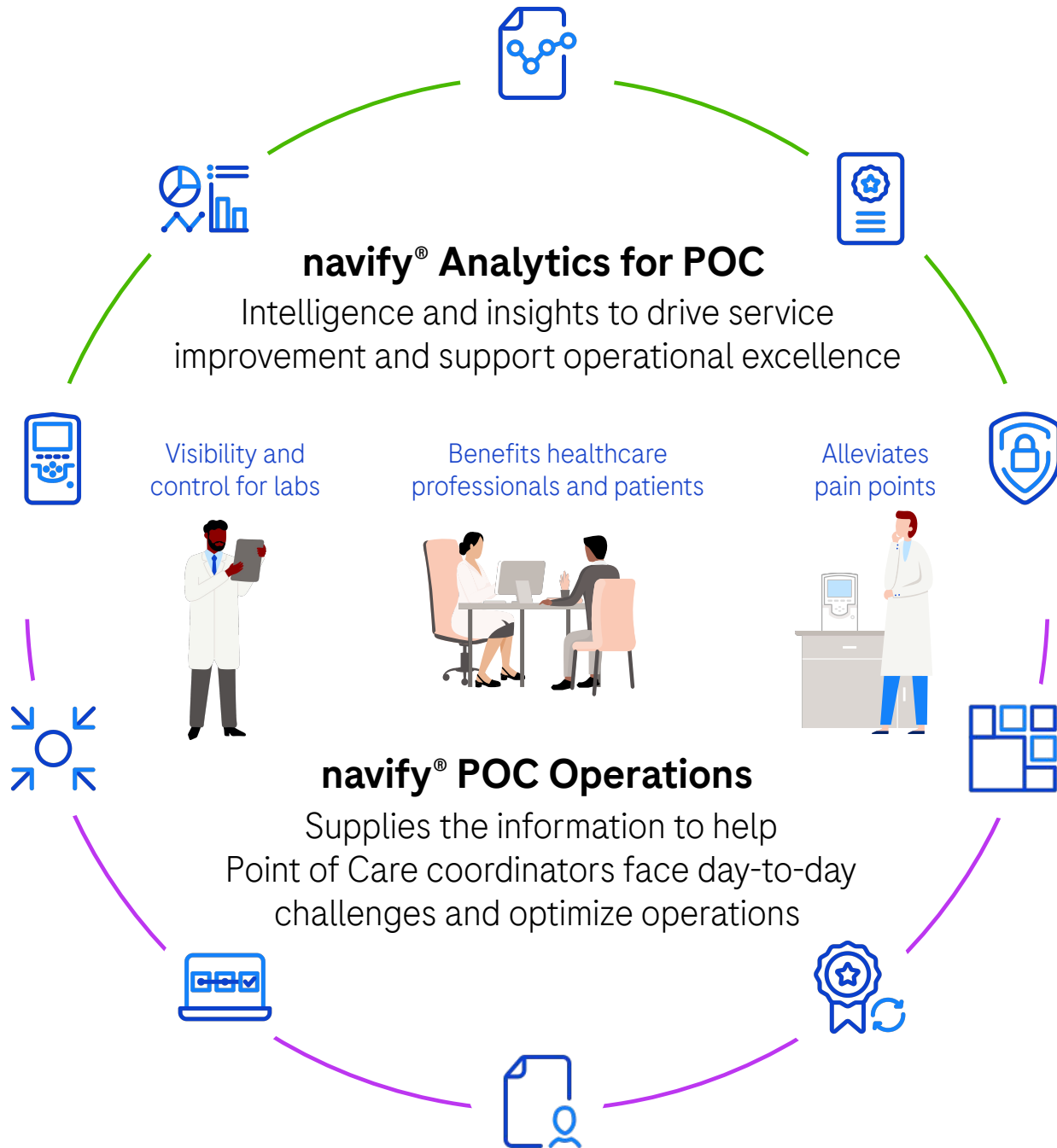


## Risk management

Helps identify, assess and control issues through insights gained from patterns to drive POC service improvement

**Unlocks data insights to reveal key trends to make quality improvements, increase efficiency, save costs, and drive value back to the lab**





**Your complete POC ecosystem, unified, simplified all in one place.**

Connected insights for better care. **It's personal.**