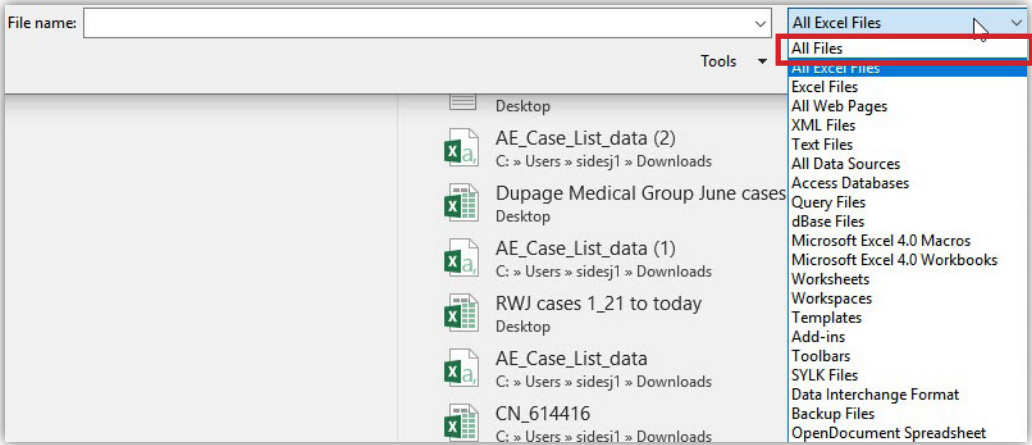


cobas® Liat® analyzer

Opening Result Archive Files with Microsoft Excel

Quick Reference Card

Steps to Open Result Archive Files with Microsoft Excel	
1	Power on the cobas® Liat® analyzer and wait for the initialization to complete.
2	Log in as Administrator or Supervisor.
3	In the Main Menu, navigate to Tools > Archive Data > Archive Results .
4	<p>Select the desired date range for result data, and then select the desired archive storage location.</p> <p><small>NOTE</small> <i>If using a USB flash drive, it is recommended to use a lockable USB flash drive.</i></p> <p><small>NOTE</small> <i>If using a USB flash drive, ensure it is formatted according to the specifications stated in the cobas® Liat® System User Guide.</i></p>
5	Wait for notification that the archive was successful, confirm the message, remove USB flash drive from the back of the cobas® Liat® analyzer.
6	Log on to a workstation or PC with Microsoft Excel installed.
7	<p>Make sure the Result Archive folder is accessible. Identify the file location and extract the folder contents by right-clicking and selecting Extract All.</p> <p><small>NOTE</small> <i>The result archive folders are named: ResultArchive_Serial#_YYYYMMDD_hhmmss.zip</i></p>
8	<p>Open the Microsoft Excel program. Navigate to File > Open > Browse and change the file type to All Files.</p> 
9	Navigate to the Result Archive file's location. Select the file and click Open .
10	Select Data > Text to columns within Microsoft Excel.

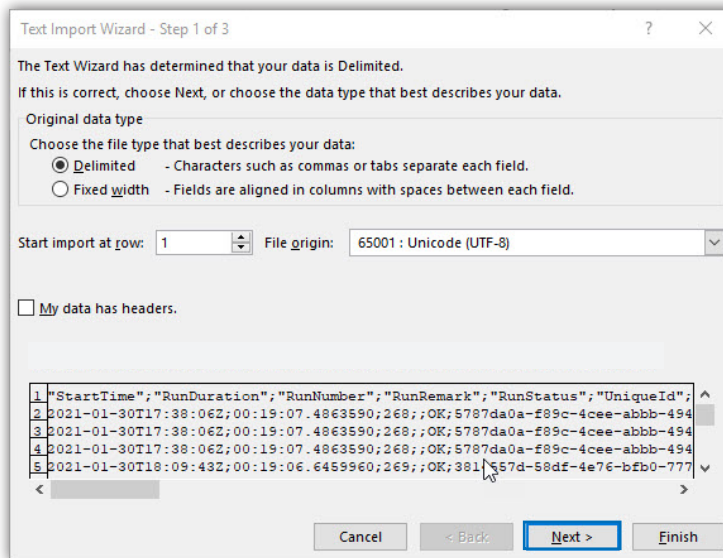
cobas[®] Liat[®] analyzer

Opening Result Archive Files with Microsoft Excel

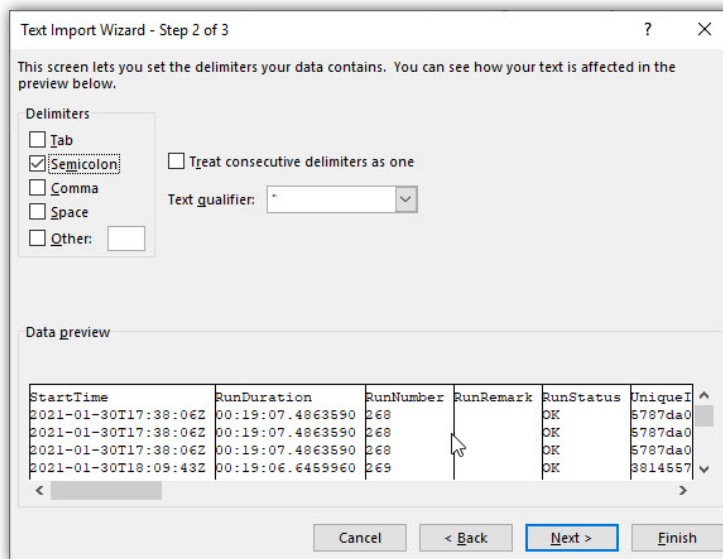
Quick Reference Card

Steps to Open Result Archive Files with Microsoft Excel - continued

- 11** This brings up the Text Import Wizard. Ensure **Delimited** is selected and click **Next**.



- 12** In the **Delimiters** section, ensure that the **Semicolon** box is checked. Click **Next**.



- 13** Select a preferred date format. Click **Finish**.

cobas[®] Liat[®] analyzer

Opening Result Archive Files with Microsoft Excel

Quick Reference Card

Steps to Open Result Archive Files with Microsoft Excel - continued

14 A table displays all available archived results contained in the ResultArchive_Serial#_YYYYMMDD_hhmmss.csv file.

i *NOTE* The default view's column headings have been expanded to show detail.

J	A	B	C	D	E	F	G	H	I	J	K	L	M	N	O
1	StartTime	RunDuration	RunNumber	RunRemark	RunStatus	UniqueId	Operator	Description	AssayId	Disclaimer	Version	ExpirationDate	LotNumber	TubeBarcode	ControlTubeBarcode
2	2021-06-14T19:19:59Z	0:20:00	250		OK	c1232544-d244-4d47-aeb3-c720ec37a32	ADMIN	Liat Strep A Assay	SASA	For In Vitro Diagnostic Use	1.28	7/31/2021 0:00	C5DZ	TSASA2107C5D201A68R	NSASA2106C0DA8RRRRRRRRRRR
3	2021-06-14T19:40:30Z	0:20:00	251		OK	02f0ca2b-c6c3-4d5e-a18e-5efbac792345	ADMIN	Liat Strep A Assay	SASA	For In Vitro Diagnostic Use	1.28	7/31/2021 0:00	C5DZ	TSASA2107C5D201AA2A	LSASA2106C0DARRRRRRRRRRRR
4	2021-07-28T15:10:31Z	14:17.4	253		OK	c61bf7c7-93fd-477c-ab00-62788d50607c	ADMIN	Liat Strep A Assay	SASA	For In Vitro Diagnostic Use	1.28	7/31/2021 0:00	C5DZ	TSASA2107C5D201A87W	
5															

(continued)

P	Q	R	S	T	U	V	W	X	Y	Z	AA	AB	AC	AD
Approver	ResultType	ResultApprovalStatus	ResultOverallStatus	TransmissionStatus	TransmittedTo	SampleId	PatientId	Flags	RunWarning	Target	TargetResult	CtValue	serialNumber	SoftwareVersion
	NegativeControl	Released	Negative			NOT AVAILABLE		None	None	Strep A	Negative		M1-E-12875	3.2.0.3525
	PositiveControl	Released	Positive			NOT AVAILABLE		None	None	Strep A	Positive	0	M1-E-12875	3.2.0.3525
ADMIN	PatientTestResult	Released	Negative			Sample1		None	None	Strep A	Negative		M1-E-12875	3.3.1.4087

COBAS and LIAT are trademarks of Roche.
 All other product names and trademarks are property of their respective owners.
 ©2018-2021, Roche Diagnostics. All rights reserved.