

2 Set up the analyzer

No special setup is required, all software and default settings are preloaded prior to shipment.

Analyzer location and operating environment

- Place on a level, vibration-free and non-reflective surface, away from direct sunlight.
- Allow at least 10 cm (4 in) rear clearance for ventilation and at least 6 cm (2.5 in) front clearance for barcode scanning.
- Operating temperature is between 15°C and 32°C (59-90°F), and relative humidity is between 15% and 80%. Operating altitude is up to 2000 metres Mean Sea Level (MSL).
- Locate the analyzer near a grounded mains outlet to avoid the power cable being a trip hazard.



3 Connect the power supply

CAUTION! Using an inappropriate power supply may cause malfunction.

Only use the power supply provided, connected to a voltage of 100-240V AC, 50-60 Hz.

- Insert the power supply cable into the analyzer power connector located at its rear.
- Connect the power cable to the power supply. Plug the other end of the cable into a properly grounded mains outlet.

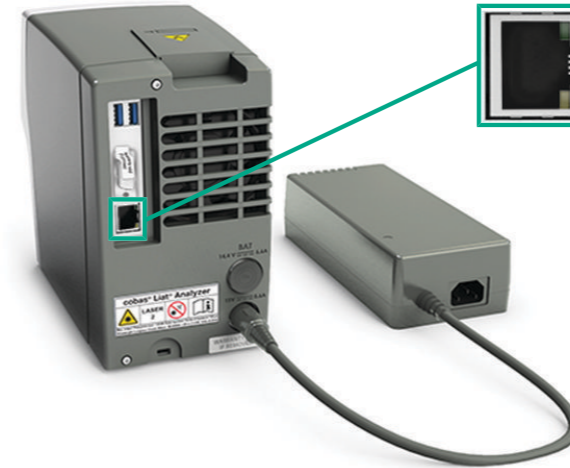


4 Optionally, connect to network

Connecting the analyzer to the network enables, for example, remote software and assay updates, automatic time/date synchronization (SNTP), and host connectivity.

- Connect the Ethernet jack on the rear of the analyzer to an appropriate wall jack using a standard Ethernet data cable with RJ-45 connectors.

Refer to the User Guide for information on defining the network environment.



5 Power on the analyzer

This initiation process takes a few minutes from power up to display of the log on screen.

- Press and release the power button.
- The analyzer starts initializing. Wait for initialization to complete.

NOTICE Do not insert an assay tube or other items into the analyzer during initialization. Doing so will damage the assay tube and the analyzer.

- The **Log on** screen is displayed when the analyzer is ready for operation.

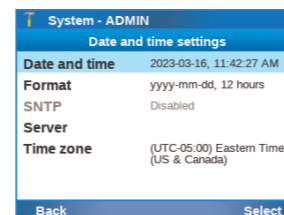
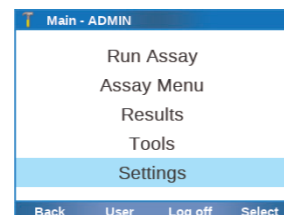


6 Log on to the analyzer

- Choose the **Log on** button.
- If you first log on to the analyzer after unboxing, enter the pre-defined user ID "ADMIN" and choose the **Enter** button.
- If you first log on after a restart, enter your user ID and choose the **Enter** button.
- If you log on to the analyzer on a routine basis, either enter your user ID and choose the **Enter** button, or choose the **Scan** button, and scan the barcode on your User ID card.

WARNING! Do not stare into the laser beam. The analyzer is a class 2 laser product.

- Enter your password or when prompted, change your password.
- On the first log on after unpacking the administrator sets first the **Time zone** and then the **Date and time**. It is recommended to keep this sequence! (**Settings > System > Date and time**).




7 Run an assay

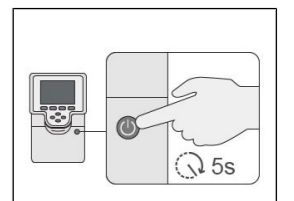
Refer to the **cobas® liat** system User Guide and the package insert or Instructions for Use of the assay for instructions on running an assay.



8 Shut down the analyzer

 Always use the shutdown function within the software. Improper shutdown can damage the analyzer!

- To log off from the analyzer, choose on the **Main** screen the **Log off** button.
- On the **Log on** screen, choose the **Shut down** button.
- Follow the instructions on the screen.
- When prompted, power off the analyzer by holding the power button until both the power indicator and the touch screen turn dark.



Electronic user documentation can be downloaded using the eLabDoc e-service on Roche DiaLog:
<https://dialogportal.roche.com>

Alternatively, scan the following QR code:



For more information, contact your local affiliate or Roche Service representative.



cobas® liat analyzer

Quick Start Guide

This Quick Start Guide is a reference for the **cobas® liat** analyzer setup. Read the entire **cobas® liat** system User Guide before using it, or running any **cobas® liat** assay.

Unpacking the analyzer

IMPORTANT! Retain the shipping container and packing materials in case you need to return the analyzer to Roche for any reason.

- Unpack the analyzer from the shipping container.
- Do not apply any force to the door on the top of the unit or to the barcode scanner window.
- Do not hold or lift the analyzer from the sample entry door or the barcode scanner window.
- Handle with care. Use both hands to support the analyzer along the sides of the base.
- Unpack the power supply and other accessories.
- Inspect the outer case, front panel buttons, screen, and rear ports for any shipping damage. Check all other items for shipping damage. Report any problems to your local Roche representative.

Incident reporting

- ▶ Inform your Roche representative and your local competent authority about any serious incidents which may occur when using this product.

Roche Support | Publication information

To obtain technical assistance, contact your local Roche representative.

Affiliates: <https://www.roche.com/worldwide>

Patents: <http://www.roche-diagnostics.us/patents>



Roche Molecular Systems, Inc.
 1080 US Highway 202 South
 Branchburg, NJ 08876
 USA



Made in Switzerland



Roche Diagnostics GmbH
 Sandhofer Strasse 116
 68305 Mannheim
 Germany



© 2015-2023 Roche Molecular Systems, Inc.
 COBAS and LIAT are trademarks of Roche.
 All other product names and trademarks are the property of their respective owners.

Revision history

Publication version 12.0

Revision date June 2023

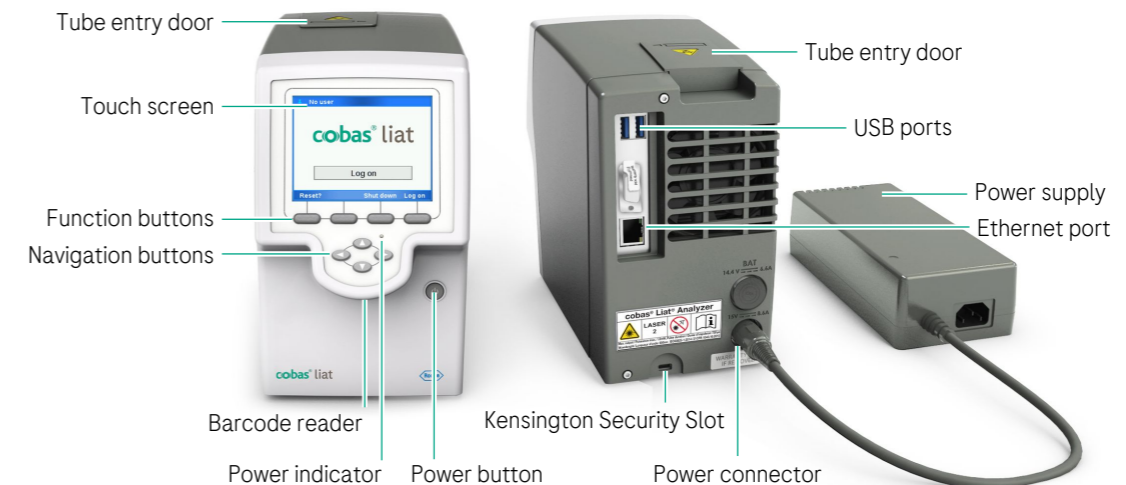
1 Parts list

Documentation

- cobas® liat analyzer Quick Start Guide
- cobas® liat system Short Instructions
- cobas® liat analyzer Cleaning Tool Guide

Hardware parts

- cobas® liat analyzer
- cobas® liat user ID card kit
- cobas® liat cleaning tool kit
- Power supply
- Power cable
- Touch screen stylus



P/N 09804536001