

Quick Start Guide for the LumiraDx Barcode Scanner

The LumiraDx Barcode Scanner can be used to:

- Capture patient or sample IDs.
- Easily enter quality control Lot numbers.
- Enter an operator username to log in to a LumiraDx Instrument. This can only be used if the Instrument is in connected mode. Please contact Customer Services to learn more.

1. What's in the Box



LumiraDx Barcode Scanner



LumiraDx Barcode Scanner cradle

2. Attaching LumiraDx Barcode Scanner Cradle



Attaching LumiraDx Barcode Scanner cradle to Instrument

Note: Correct orientation of Barcode Scanner cradle



Detaching LumiraDx Barcode Scanner cradle from Instrument

3. Setting up the LumiraDx Barcode Scanner



Barcode symbol on screen indicates that you can scan for data entry. Tap symbol for Barcode Scanner instructions.

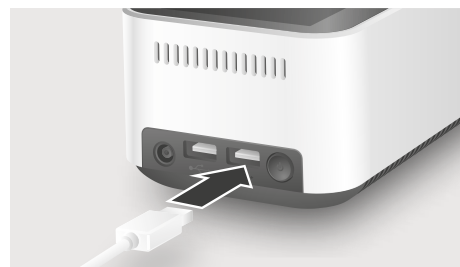
Scanning distance

Hold scanner approximately 15 cm from barcode.

Scanner lights

Scan button

Press button to scan. A successful scan will be indicated by a beep sound and green light.



Insert USB connector into one of the USB ports at the rear of the Instrument.



4. Getting Started

To get started, first check that the LumiraDx Barcode Scanner is already set up to use. On the Instrument Home Screen:

- Select "Patient Test"
- Scan the barcode below:



- Check that 69121847974 appears in the ID field.

If the above number does not appear or you get an error, follow the setup process below. If you use custom barcodes for sample tracking, contact Customer Services.

5. LumiraDx Barcode Scanner Basic Setup Process

Setting up the LumiraDx Barcode Scanner should take about 2 minutes. Please read through these instructions before starting to setup the scanner.



You will need the following items:

- LumiraDx Barcode Scanner.
- LumiraDx Instrument.
- Patient sample ID, if you use these in your institution.

5.1. Connect the Barcode Scanner to the USB port of the LumiraDx Instrument and wait for 5 seconds. Then scan this barcode:



DEFAULT

5.2. Listen for a single audible tone and look for the green LED on the Barcode Scanner to flash. Wait for 5 seconds. Then scan the following barcode:



5.3. Listen for a single audible tone and look for the green LED on the Barcode Scanner to flash. Wait for 5 seconds. Then scan the following barcode:



HOSTCFG 0

5.4. Listen for a single audible tone and look for the green LED on the scanner to flash. Wait for 5 seconds. Then scan the following barcode:



DLYGDRD 500

5.5. Repeat section 4 to check your Barcode Scanner is setup correctly. If you are experiencing problems contact Customer Services.

If you use complicated barcodes, you'll need to contact Customer Services to complete the setup process.

6. Customer Services

Please email or call Customer Services if you have questions about this product.

Email: customerservices@lumiradx.com

Phone: for your local Customer Services phone number please visit the Contact Us page at lumiradx.com

Manufacturer Information

JADACK, 7279 William Barry Blvd, North Syracuse, New York, 13212-3349, USA

Copyright © 2025 LumiraDx and affiliates. All rights reserved. LumiraDx and Flame logo are protected trademarks of LumiraDx International LTD. Full details of these and other registrations of LumiraDx can be found at lumiradx.com/IP. All other trademarks are the property of their respective owners.