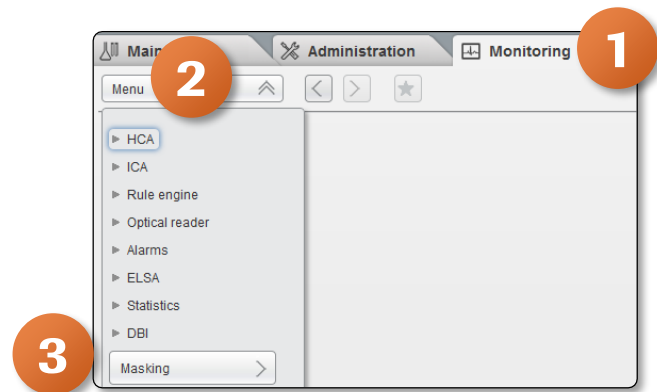


Overview of Masking Screen

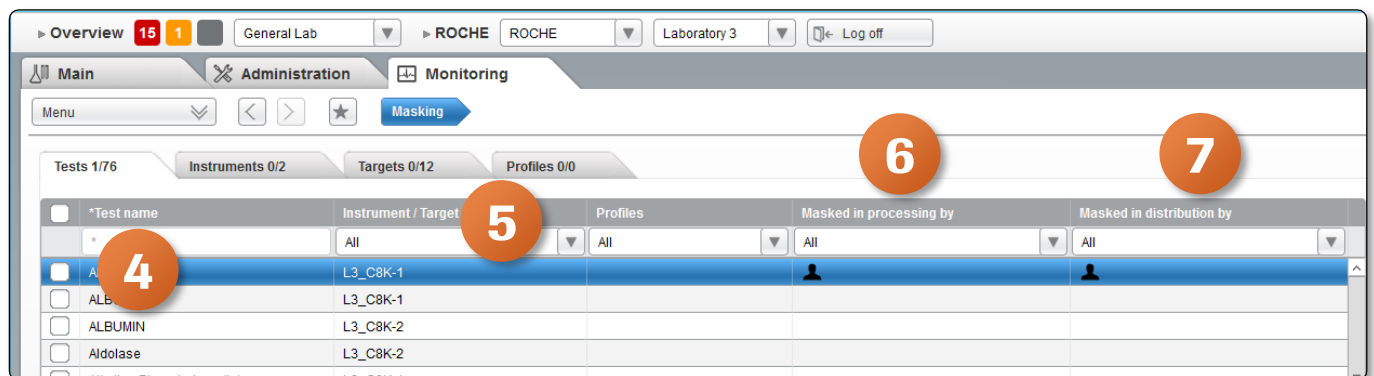
Overview of Masking Screen

In the Masking screen you can manage the masking or unmasking actions and monitor the masking status of tests, targets, instruments and profiles.

1. Once logged into the **cobas[®] infinity** software, select the **Monitoring** tab (make sure in General lab)
2. Click on **Menu**
3. Select **Masking**

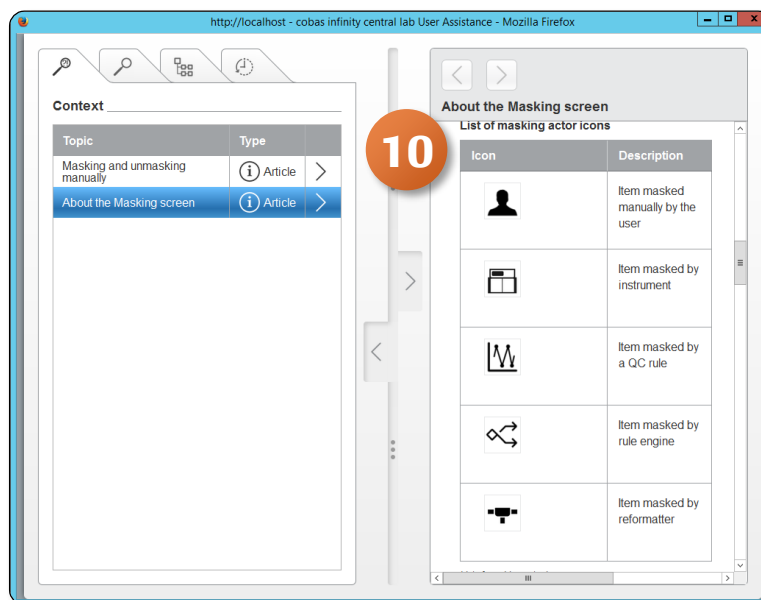
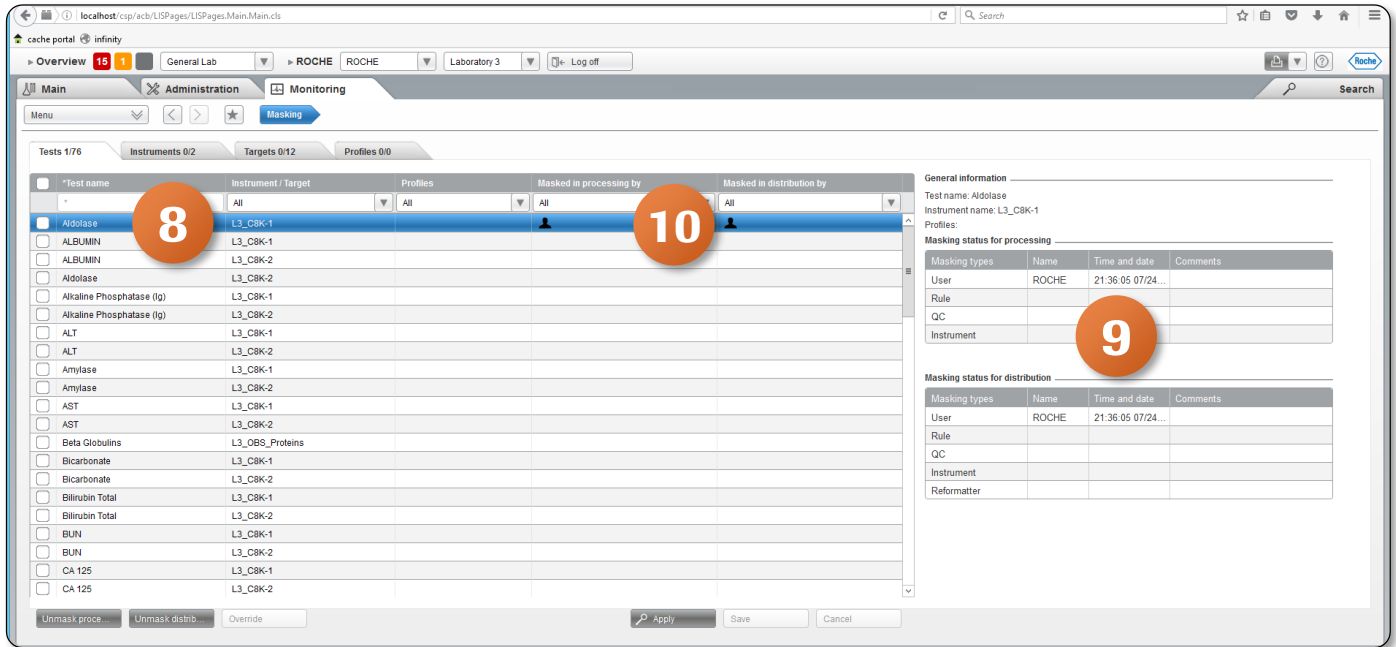


4. Once in the Masking screen, type * in the **Test Name** box in the Tests tab and click Enter to see all tests defined in the system
5. The **Instrument/Target** column will show the instrument or target where that test is being ran. You have the option to sort by different instrument/targets by using the drop down menu
6. The **Masked in processing** column is considered in the workflow calculation and the sample is distributed here. If the test is masked in processing, once a query is received from an analyzer, infinity will not send the sample to that analyzer for that test. However, the software does not send any information to the target, and therefore, the sample is not processed and the tube continues with the workflow. This option can be used when an item is temporarily unavailable, e.g. due to QC error
7. The **Masked in distribution** column is populated when the target is closed, therefore it is not considered in the workflow calculation and the sample is not distributed to that target. This option can be used when an instrument or a test is down for the whole day.



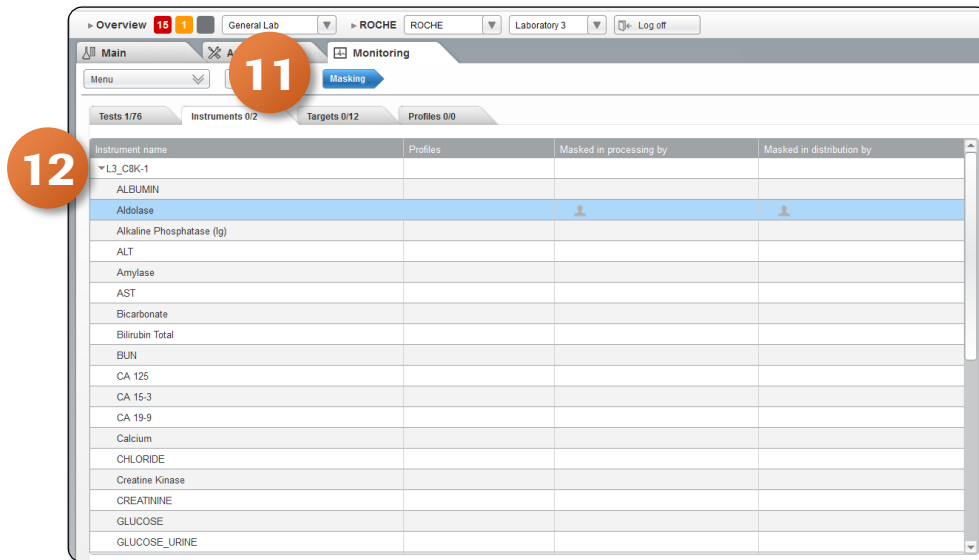
Overview of Masking Screen

8. For this example, click on **Aldolase** on the left hand side of the screen in the **Test name** column
9. The right hand side of the screen now shows **General information** about this masked test including username, date, and time of masking
10. The icon under Masked in processing and Masked in distribution indicates that this test was **masked manually by the user**. To easily identify the meaning of an icon, click **F1 for context sensitive help**



Overview of Masking Screen

11. Click on the **Instruments tab** to see all enabled analyzers available in the current location. When an instrument is masked, the corresponding icon only appears next to the instrument, but not next to all tests associated with it
12. Select the arrow by the instrument to see all tests loaded on that instrument



13. Click on the **Targets tab** to see all instrument buffers, pre-analytical and post-analytical instruments, manual archives, virtual targets, recappers, and decappers available in current location
14. The **Profiles tab** displays all the profiles available in the current location

